



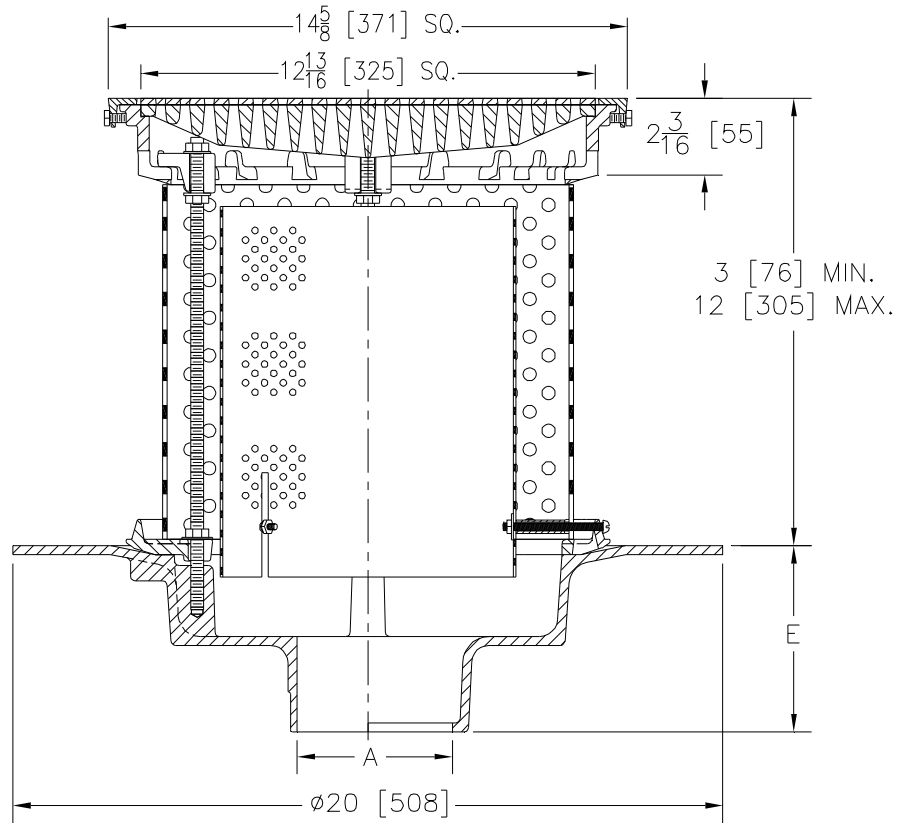
Z107-99

20 [508] WIDE DECK DRAIN W/PERFORATED EXTENSION, FILTER, & HEEL-PROOF GRATE

SPECIFICATION SHEET

TAG _____

Dimensional Data (inches and [mm]) are Subject to Manufacturing Tolerances and Change Without Notice



A Pipe Size In.	Approx. Wt. Lbs. [kg]	Grate Open Area Sq. In. [cm ²]
3, 4 [76, 102]	50 [23]	44 [284]
6, 8 [152, 203]		

ENGINEERING SPECIFICATION: ZURN Z107-99

20 [508] Diameter wide deck drain. Dura-Coated cast iron body with combination membrane flashing clamp/gravel guard, stainless steel perforated extension, secondary perforated filter, and rotatable square nickel bronze promenade frame with heel-proof slotted grate.

OPTIONS (Check/specify appropriate options)

PIPE SIZE

- 3, 4, 6 [76, 102, 152]
- 3, 4 [76, 102]
- 3, 4, 6, 8 [76, 102, 152, 203]

(Specify size/type) OUTLET

- ___ IC Inside Caulk
- ___ IP Threaded
- ___ NH No-Hub

E BODY HT. DIM.

- 5 1/4 [133]
- 5 1/4 [133]
- 5 1/4 [133]

PREFIXES

- ___ ZN D.C.C.I. Body Assembly w/Polished Nickel Bronze Top*

SUFFIXES

- ___ -AC Angular Underdeck Clamp
- ___ -AR Acid Resistant Epoxy Coated
- ___ -C Underdeck Clamp
- ___ -DG Duresist Grate
- ___ -DT Decorative Polished Top
- ___ -G Galvanized Cast Iron
- ___ -TS Top Secured with Slotted Screws
- ___ -VP Vandal-Proof Secured Top
- ___ -XJ Vertical Expansion Joint (See Z190)

*REGULARLY FURNISHED UNLESS OTHERWISE SPECIFIED

REV.	DATE: 12/5/07	C.N. NO. 97799
DWG. NO. P-15495 PRODUCT NO. Z107-99		