

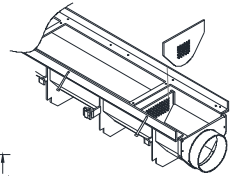
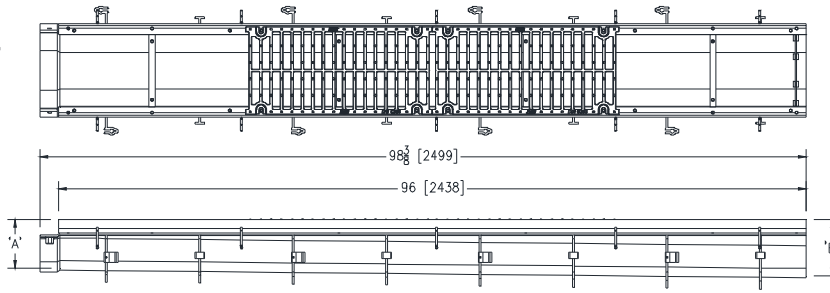
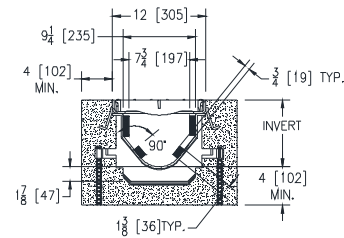


# Z882-78

## 12 [305] WIDE REVEAL TRENCH DRAIN SYSTEM WITH STEEL FRAME AND LINT SCREEN

Dimensional Data (inches and [ mm ]) are Subject to Manufacturing Tolerances and Change Without Notice

SPECIFYING ENGINEER IS RESPONSIBLE FOR CONCRETE ENCASEMENT AND REINFORCING BASED UPON APPLICATION AND LOCAL CODES



### ENGINEERING SPECIFICATION: Zurn Z882-78

Channels shall be 96" [2438mm] long, 12" [305mm] wide reveal and have a 9-1/4" [235mm] throat. Modular channel sections shall be made of 0% water absorbent High Density Polyethylene (HDPE) with welded tabs for lint assembly. Shall have a positive mechanical connection between channel sections that will not separate during the installation and shall mechanically lock into the concrete surround every 12" [305mm]. Channels shall weigh less than 5.05 lbs. [2.29kg] per linear foot, have a smooth, 3" [76mm] radiused self cleaning bottom with a Manning's coefficient of 0.009 and 1.04% or neutral 0% built in slope. Channels shall have rebar clips standard to secure trench in its final location. Shall be provided with standard DGC grates that lock down to frame. Zurn 12" [305mm] wide reveal Ductile Iron Slotted Grate conforming to ASTM specification A536-84, Grade 80-55-06. Ductile Iron grate is rated class C per the DIN EN1433 top load classifications. Supplied in 24" [608mm] nominal lengths with 13/16" [21mm] wide slots, and 1-1/2" [38mm] bearing depth. Grate has an open area of 80.8 sq. in per ft. [171,027 sq. mm per meter]. The 1/4" [6mm] thick Heavy-Duty Carbon Steel Frame Assembly conforms to ASTM specification A36 with 10 - 4" [102mm] long concrete anchors per 96" [2438mm]. Grate lockdown bars are to be integral to the frame. The frame is supplied with a powder coated finish. Frames Shall be produced in the U.S.A.

### PREFIX OPTIONS (Check/specify appropriate options)

- Z Eight-foot High Density Polyethylene (HDPE) Channel, Heavy-Duty Frame with Anchor Studs.\*

### SUFFIX OPTIONS (Check/specify appropriate options)

#### Outlet Adapters Add/Each

- E1 Closed End Cap
- E4 4 [102] No-Hub End Outlet
- E6 6 [152] No-Hub End Outlet
- E8 8 [203] No-Hub End Outlet

#### Grate Options (Load Classifications are per DIN EN1433)

- BDC Black Acid Resistant Epoxy Coated Ductile Grate - Class C
- BDE Black Acid Resistant Epoxy Coated Ductile Grate - Class E
- BDF Black Acid Resistant Epoxy Coated Ductile Grate - Class F
- DC Ductile Iron Solid Cover - Class C
- DGC Ductile Iron Slotted Grate - Class C \*
- DGE Ductile Iron Slotted Grate - Class E
- DGF Ductile Iron Slotted Grate - Class F
- GDC Galvanized Ductile Slotted Grate - Class C
- GDE Galvanized Ductile Slotted Grate - Class E
- GDF Galvanized Ductile Slotted Grate - Class F
- GHPD Galvanized Heel-Proof Ductile Grate - Class B
- GHPDE Galvanized Heel-Proof Ductile Slotted Grate - Class E
- HPD Heel-Proof Ductile Slotted Grate - Class B
- HPDE Heel-Proof Ductile Slotted Grate - Class E
- HPDE Heel-Proof Ductile Slotted Grate - Class E
- RFGC Reinforced Slotted Galvanized Grate - Class C
- RPGC Reinforced Perforated Galvanized Grate - Class C
- RPGRC Reinforced Perforated Galvanized Reverse Punch Grate - Class C
- RFSC Reinforced Slotted Stainless Steel Grate - Class C
- RPSC Reinforced Perforated Stainless Steel Grate - Class C

Trench No.	'A' Shallow Inv.	'B' Deep Inv.	Flow		
			(cfs)	(gpm)	(lps)
8201	6.25 [159]	7.25 [184]	1.241	557	35
8202	7.25 [184]	8.25 [210]	1.725	774	49
8203	8.25 [210]	9.25 [235]	2.226	999	63
8203N	9.25 [235]	9.25 [235]	-	-	-
8204	9.25 [235]	10.25 [260]	2.745	1232	78
8205	10.25 [260]	11.25 [286]	3.271	1468	93
8206	11.25 [286]	12.25 [311]	3.808	1709	108
8206N	12.25 [311]	12.25 [311]	-	-	-
8207	12.25 [311]	13.25 [337]	4.347	1951	123
8208	13.25 [337]	14.25 [362]	4.893	2196	139
8209	14.25 [362]	15.25 [387]	5.443	2443	155
8209N	15.25 [387]	15.25 [387]	-	-	-
8210	15.25 [387]	16.25 [413]	5.996	2691	170
8211	16.25 [413]	17.25 [438]	6.551	2940	186
8212	17.25 [438]	18.25 [464]	7.106	3189	202

- RPSRC Reinforced Perforated Stainless Steel Reverse Punch Grate - Class C

#### Miscellaneous Options

- CBF Black Acid Resistant Coated Top Frame
- JC Joint Connector
- SW Sidewall Extensions - 11 [279] High
- SW2 Double Sidewall Extensions - 22 [559] High
- VP Vandal-Proof Lockdown

### MADE in the U.S.A.

- ADA-USA Meets Americans with Disabilities Act Requirements - Class C
- BG Galvanized Steel Bar Grate - Class D
- DGC-USA Ductile Iron Slotted Grate - Class C
- DGE-USA Ductile Iron Slotted Grate - Class E
- FG Fabricated Galvanized Steel Slotted Grate - Class A
- FS Fabricated Stainless Steel Slotted Grate - Class A
- GADA-USA Galvanized Ductile ADA Slotted Grate - Class C
- GDC-USA Galvanized Ductile Slotted Grate - Class C
- GDE-USA Galvanized Ductile Slotted Grate - Class E
- GHPDE-USA Galvanized Ductile Slotted Grate - Class E
- HPDE-USA Heel-Proof Ductile Slotted Grate - Class E
- GG Fiberglass Grate - Class A
- PG Perforated Galvanized Steel Grate - Class A
- PS Perforated Stainless Steel Grate - Class A
- RFG Reinforced Galvanized Slotted Grate - Class B
- RFS Reinforced Stainless Steel Slotted Grate - Class B
- RPG Reinforced Galvanized Perforated Grate - Class B
- RPS Reinforced Stainless Steel Perforated Grate - Class B
- SBG-L Stainless Steel Bar Grate - Class C

\* Regularly furnished unless otherwise specified.

Zurn Industries, LLC | Specification Drainage Operation  
 1801 Pittsburgh Avenue, Erie, PA U.S.A. 16502 · Ph. 855-663-9876, Fax 814-454-7929  
 In Canada | Zurn Industries Limited  
 3544 Nashua Drive, Mississauga, Ontario L4V 1L2 · Ph. 905-405-8272, Fax 905-405-1292  
[www.zurn.com](http://www.zurn.com)

Rev. -  
 Date: 11/14/16  
 C.N. No. 135514  
 Prod. | Dwg. No. Z882-78