



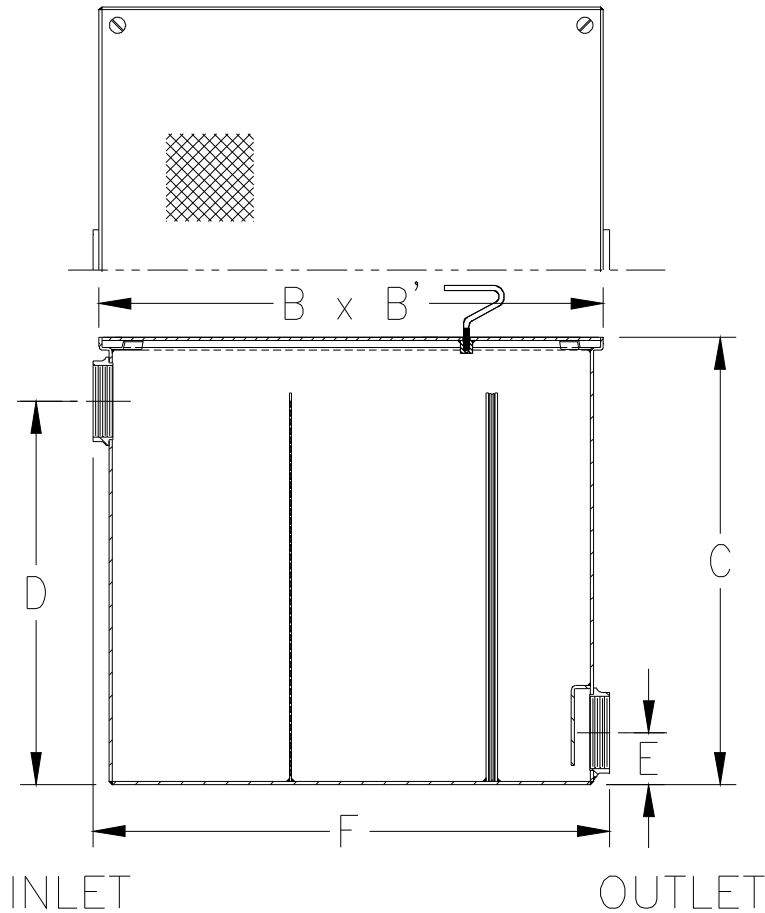
Z1185-119

LINT INTERCEPTOR W/MODIFIED 6[152] INLET AND OUTLET HEIGHTS

SPECIFICATION SHEET

TAG _____

Dimensional Data (inches and [mm]) are Subject to Manufacturing Tolerances and Change Without Notice



Size No. of Machines	Inlet/Outlet Size**	Flow Rate G.P.M. [L]	Approx. Wt. Lbs. [kg]	Dimensions In Inches					
				B	B'	C	D	E	F
10	6 [152]	100 [378]	271 [123]	33 [838]	33 [838]	28 [711]	22 [559]	12-1/2 [311]	34 [864]

ENGINEERING SPECIFICATION: ZURN Z1185-119 Acid Resistant Coated interior and exterior fabricated steel lint interceptor, non-skid secured cover, with stainless lint intercepting secondary screen assembly and permanent primary straining baffle.

OPTIONS (Check/specify appropriate options)

PREFIXES

____ Z Acid Resistant Coated Fabricated Steel*

SUFFIXES

____-E Acid Resistant Coated interior and exterior fabricated steel extension section (Specify 'C' dimension required for recessed installation).

____-RS Stainless Steel Screen Replacement Assembly

REV.	DATE: 10/01/09	C.N. NO. 110271
DWG. NO. P-15776		PRODUCT NO. Z1185-119

*REGULARLY FURNISHED UNLESS OTHERWISE SPECIFIED