



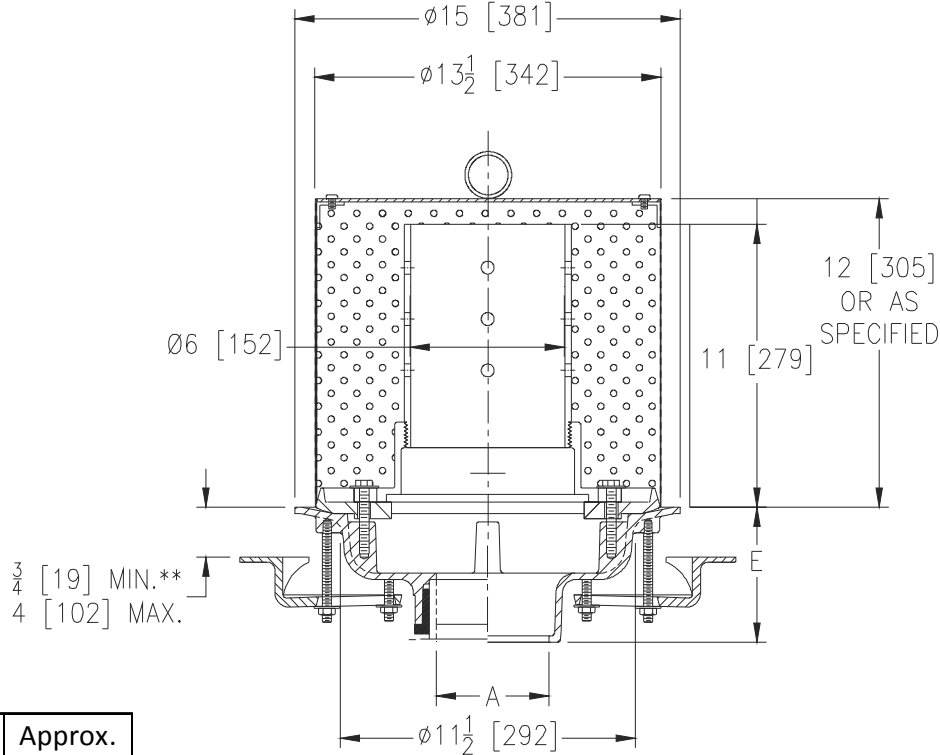
# Z100-328

Ø15 [381] MAIN ROOF DRAIN W/ PERFORATED STANDPIPE, STAINLESS STEEL PERFORATED GRAVEL GUARD, AND UNDERDECK CLAMP

SPECIFICATION SHEET

TAG \_\_\_\_\_

Dimensional Data (inches and [ mm ]) are Subject to Manufacturing Tolerances and Change Without Notice



A Pipe Size in [mm]	Approx. Wt. lbs [kg]
2,3,4 [51,76,102]	41 [19]
5,6 [127,152]	42 [19]
8 [203]	43 [20]

**ENGINEERING SPECIFICATION: ZURN Z100-328**

15" [381mm] Diameter roof drain. Dura-Coated cast iron body with combination membrane flashing clamp/gravel guard, 6" [152mm] standpipe, underdeck clamp and stainless steel perforated gravel guard with solid secured top.

**OPTIONS** (Check/specify appropriate options)

**PIPE SIZE**

- 2,3,4,5,6,8 [51,72,102,127,152,203]
- 2,3,4,5,6,8 [51,72,102,127,152,203]
- 2,3,4,5,6,8 [51,72,102,127,152,203]
- 2,3,4 [51,76,102]
- 6 [152]

(Specify size/type) **OUTLET**

- \_\_\_\_\_ IC Inside Caulk
- \_\_\_\_\_ IP Threaded
- \_\_\_\_\_ NH No-Hub
- \_\_\_\_\_ NL Neo-Loc
- \_\_\_\_\_ NL Neo-Loc

**E BODY HT. DIM.**

- 5-1/4 [133]
- 3-3/4 [95]
- 5-1/4 [133]
- 4-9/16 [116]
- 5-7/16 [112]

**PREFIXES**

- \_\_\_\_\_ Z D.C.C.I. Body

**SUFFIXES**

- \_\_\_\_\_ -AR Acid Resistant Epoxy Coated
- \_\_\_\_\_ -DX Dex-o-tex Flange
- \_\_\_\_\_ -E Static Extension 1 [25] thru 4 [102] (Specify Ht.)
- \_\_\_\_\_ -G Galvanized Cast Iron
- \_\_\_\_\_ -SC Secondary Clamp Collar
- \_\_\_\_\_ -VP Vandal-Proof Secured Top
- \_\_\_\_\_ -90 90° Threaded Side Outlet Body (2,3,4,5,6 [51,72,102,127,152])

\* Regularly furnished unless otherwise specified.