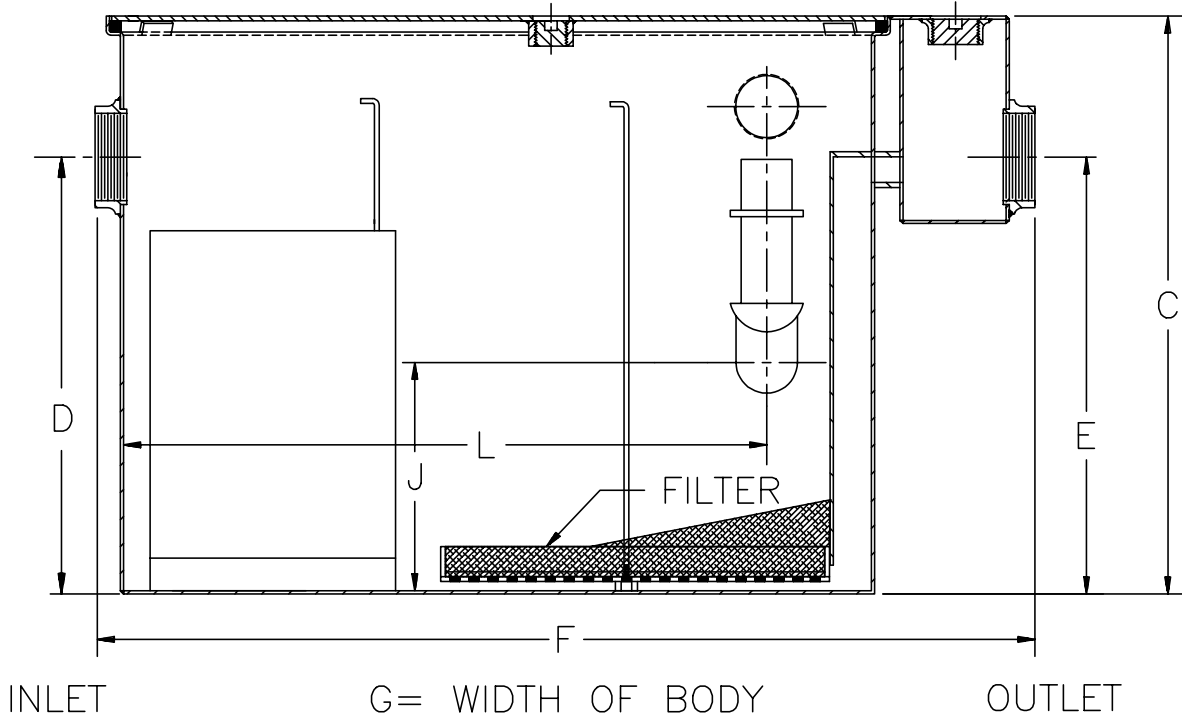




Z-1188-93
LARGE CAPACITY OIL
INTERCEPTOR WITH FILTER MEDIUM

TAG _____

Dimensions Subject to Manufacturing Tolerances



Flow Rate G.P.M.	Inlet/Outlet Size**	Water Capacity Gal.	Approx. Wt. Lbs.	Number of Covers	Dimensions In Inches						
					C	D	E	F	G	J	L
75	3	65	332	1	22-3/4	18-1/2	18-1/2	36	28-5/8	8	25-3/4
100	3	110	432	1	27	23	23	42-3/4	33-5/8	10	30-1/8
125	3	150	780	2	30-1/8	24-1/2	24-1/2	49-1/4	40	14-1/2	36-5/8
150	4	190	888	2	30-3/4	25-1/4	25-1/4	56	41-3/8	14	43-7/8
200	4	165	1055	2	35-1/2	29-7/8	29-7/8	61	43-5/8	18	46-5/8
250	5	460	1438	2	41	36	36	71	51-3/8	20	56-5/8
300	5	660	1840	2	46-1/4	39-5/8	39-5/8	80	58-3/8	20-5/8	65-5/8
350	6	860	2180	2	50-1/2	43-7/8	43-7/8	87	63-5/8	20-1/4	74-1/8
400	6	1090	2536	3	54-1/4	47-5/8	47-5/8	94	67	20-1/2	79-1/8
450	6	1275	2816	3	55-1/4	48-5/8	48-5/8	100	72	22-1/4	85-3/8
500	6	1435	2970	3	57-1/4	51-5/8	51-5/8	104	74	23-1/4	88-3/8

ENGINEERING SPECIFICATION: ZURN Z-1188-93 Large capacity Acid Resistant Coated interior and exterior fabricated steel oil interceptor, with internal air relief by-pass, bronze cleanout plug and visible double wall trap seal, removable combination pressure equalizing/flow diffusing baffle and sediment bucket, horizontal filter baffle with filter medium, adjustable oil drawoff and vent connections either side. Secured gasketed non-skid cover complete with flow control fitting. Regularly furnished with inlet and outlet in high position.

OPTIONS (Check/specify appropriate options)

PREFIXES

_____ Z- Acid Resistant Coated Fabricated Steel*

SUFFIXES

_____ -E Acid Resistant Coated interior and exterior fabricated steel extension section. (Specify 'C' Dim. required) for recessed installation.

_____ -HD Heavy duty traffic cover rated at 10,000 lbs. maximum safe live load.

_____ -K Anchor flange 1-3/4" down from top and 2" wide. No extension required to accommodate -K.

_____ -KC Anchor flange 1-3/4" down from top and 2" wide with clamp collar.

REV.	DATE: 8/24/93	C.N. NO. 69170
DWG. NO. P-13852 PRODUCT NO. Z-1188-93		

*REGULARLY FURNISHED UNLESS OTHERWISE SPECIFIED