



Z882-HDS-SW

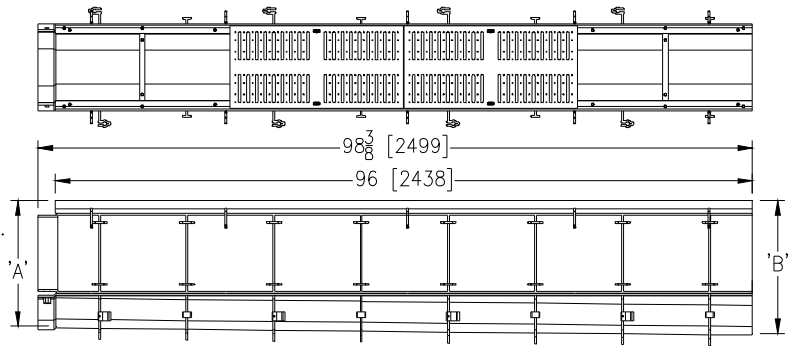
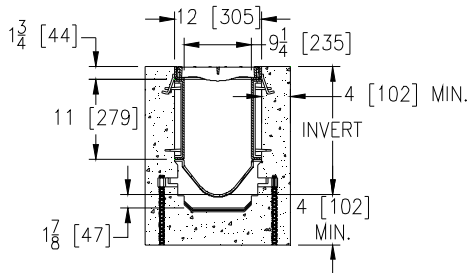
SPECIFICATION SHEET

12 [305] WIDE REVEAL TRENCH DRAIN SYSTEM WITH STAINLESS STEEL FRAME AND SIDEWALL EXTENSIONS

TAG _____

Dimensional Data (inches and [mm]) are Subject to Manufacturing Tolerances and Change Without Notice

SPECIFYING ENGINEER IS RESPONSIBLE FOR CONCRETE ENCASEMENT AND REINFORCING BASED UPON APPLICATION AND LOCAL CODES



Note: + Actual Channel length is 98 3/8 [2499] to allow for overlap.

ENGINEERING SPECIFICATION: Zurn Z882-HDS-SW Channels shall be 96 [2438] long, 12 [305] wide reveal and have a 9-1/4 [235] throat. Modular channel sections shall be made of 0% water absorbent High Density Polyethylene (HDPE). Shall have a positive mechanical connection between channel sections that will not separate during the installation and shall mechanically lock into the concrete surround every 12 [305]. Channels shall weigh less than 5.05 lbs. [2.29kg] per linear foot, have a smooth, 3 [76] radiused self cleaning bottom with a Manning's coefficient of 0.009 and 1.04% or neutral 0% built in slope. Channels shall have HDPE SW Side Walls provided for an additional 11 [279] added to the standard channel invert for additional flow capability shown in chart below. Channels shall have all grates locked down. Shall have rebar clips standard to secure trench in its final location. Shall be provided with the standard RFS grates that lock down to the frame. Zurn 12 [305] wide reveal Stainless Steel Reinforced Slotted Grate conforming to ASTM specification A351, Grade CF8 (type 304). Fabricated grate is rated class B per the DIN EN1433 top load classification. Supplied in 24 [608] nominal lengths with 3/8 [10] wide slots, 1-1/2 [38] bearing depth. Grate has an open area of 25.61 sq. in. per ft [54207 sq. mm per meter]. Tie down recesses provided for securing option. The 0.25 [6] thick Stainless Steel Frame Assembly conforms to ASTM specification A-240 (type 304). with 10 - 4 [102] long concrete anchors per 96 [2438]. Grate lockdown bars are integral to the frame. All welds must be performed by a certified welder per ASTM standard AWS D1.6. Frames Shall be produced in the USA.

PREFIX OPTIONS (Check/specify appropriate options)

- Z Eight-foot High Density Polyethylene (HDPE) Channel, Heavy-Duty Stainless Steel Frame with Anchor Studs.*

SUFFIX OPTIONS (Check/specify appropriate options)

Outlet Adapters Add/Each

- E1 Closed End Cap
- E4 4 [102] No-Hub End Outlet
- E6 6 [152] No-Hub End Outlet
- E8 8 [203] No-Hub End Outlet
- U4 4 [102] No-Hub Bottom Outlet
- U6 6 [152] No-Hub Bottom Outlet
- U8 8 [203] No-Hub Bottom Outlet

Grate Options (Load Classifications are per DIN EN1433)

- BDC Black Acid Resistant Epoxy Coated Ductile Grate - Class C
- BDE Black Acid Resistant Epoxy Coated Ductile Grate - Class E
- DC Ductile Iron Solid Cover - Class C
- DGC Ductile Iron Slotted Grate - Class C
- DGE Ductile Iron Slotted Grate - Class E
- DGF Ductile Iron Slotted Grate - Class F
- HPD Heel-Proof Ductile Slotted Grate - Class C
- HPDE Heel-Proof Ductile Slotted Grate - Class E

Miscellaneous Options

- JC Joint Connector
- SF Type 304 Stainless Steel Top Frame
- VP Vandal-Proof Lockdown

Trench No.	'A' Shallow Inv.	'B' Deep Inv.	Flow		
			(cfs)	(gpm)	(lps)
8202 SW	18.25 [464]	19.25 [489]	7.67	3443	217
8203 SW	19.25 [489]	20.25 [514]	7.95	3568	225
8203N SW	20.25 [514]	21.25 [540]	8.51	3820	241
8204 SW	21.25 [540]	21.25 [540]	-	-	-
8205 SW	21.25 [540]	22.25 [565]	9.07	4072	257
8206 SW	22.25 [565]	23.25 [591]	9.63	4325	273
8206N SW	23.25 [591]	24.25 [616]	10.20	4578	289
8607 SW	24.25 [616]	24.25 [616]	-	-	-
8208 SW	24.25 [616]	25.25 [641]	10.76	4832	305
8209 SW	25.25 [641]	26.25 [667]	11.33	5085	321
8209N SW	26.25 [667]	27.25 [692]	11.89	5339	337
8210 SW	27.25 [692]	27.25 [692]	-	-	-
8211 SW	27.25 [692]	28.25 [718]	12.46	5594	353
8212 SW	28.25 [718]	29.25 [743]	13.03	5848	369

MADE in the U.S.A.

- ADA-USA Meets Americans with Disabilities Act Requirements - Class C
- DGC-USA Ductile Iron Slotted Grate - Class C
- DGE-USA Ductile Iron Slotted Grate - Class E
- FS Fabricated Stainless Steel Slotted Grate - Class A
- GG Fiberglass Grate - Class A
- PS Perforated Stainless Steel Grate - Class A
- RFS Reinforced Stainless Steel Slotted Grate - Class B *
- RPS Reinforced Stainless Steel Perforated Grate - Class B
- SBG-L Stainless Steel Bar Grate - Class B

Miscellaneous Options

- DB Bottom Dome Strainer

*REGULARLY FURNISHED UNLESS OTHERWISE SPECIFIED

REV. A DATE: 7/15/11 C.N. NO. 121597
 DWG. NO. 301790 PRODUCT NO. Z882-HDS-SW

ZURN INDUSTRIES, LLC ♦ SPECIFICATION DRAINAGE OPERATION ♦ 1801 Pittsburgh Ave. ♦ Erie, PA 16514

Phone: 814455-0921 ♦ Fax: 814454-7929 ♦ World Wide Web: www.zurn.com

In Canada: ZURN INDUSTRIES LIMITED ♦ 3544 Nashua Drive ♦ Mississauga, Ontario L4V1L2 ♦ Phone: 905/405-8272 Fax: 905/405-1292