



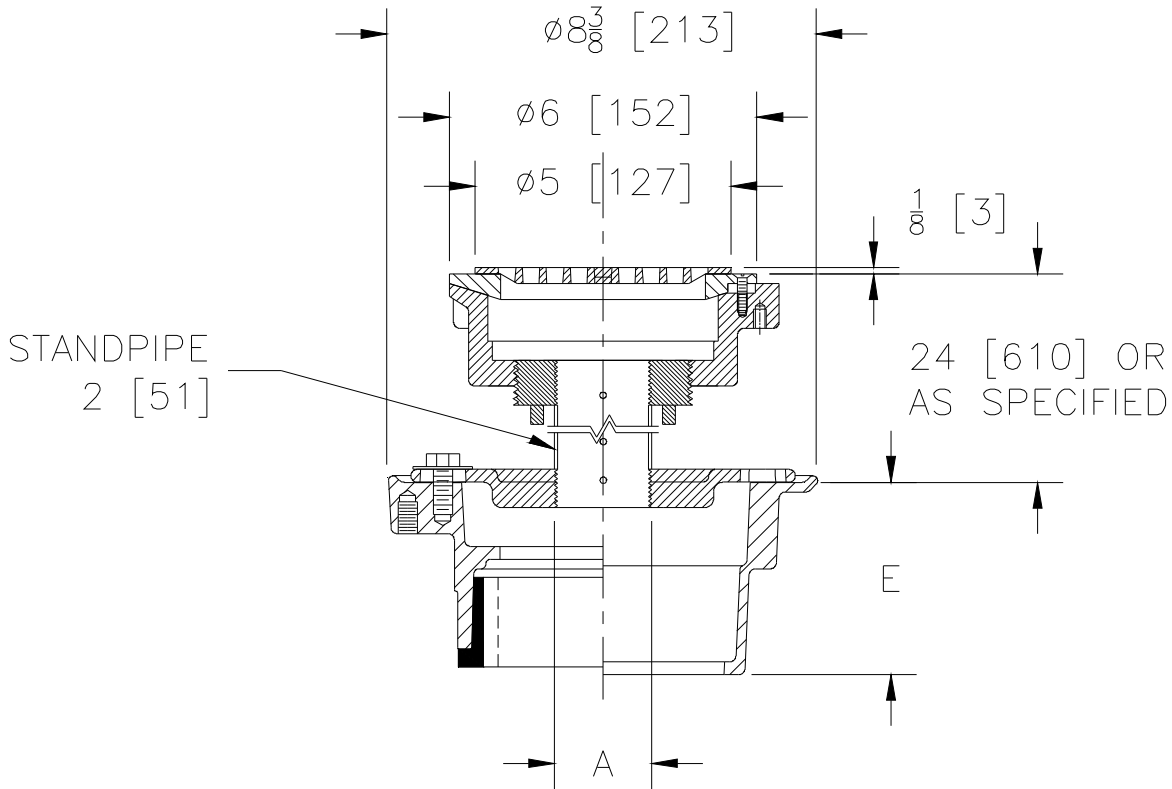
Z181-95

6 [152] DIAMETER CORNICE DRAIN BOTTOM OUTLET WITH LOWER BODY, PERFORATED STANDPIPE, AND FLUSHGRATE

SPECIFICATION SHEET

TAG _____

Dimensional Data (inches and [mm]) are Subject to Manufacturing Tolerances and Change Without Notice



A- Pipe Size In. [mm]	Approx. Wt. Lbs. [kg]	Grate Open Area Sq. In. [cm ²]
2, 3 [51, 76]	7 [3]	6-1/4 [40]
4 [102]	8 [4]	6-1/4 [40]

ENGINEERING SPECIFICATION: ZURN ZB181-95

6" [152mm] Diameter Cornice drain, Dura-Coated cast iron body, bronze flat strainer and membrane flashing clamp, complete with cast iron lower drain body, invertible membrane clamp and perforated brass standpipe.

OPTIONS (Check/specify appropriate options)

PIPE SIZE

2, 3, 4 [51, 76, 102]
 2, 3, 4 [51, 76, 102]
 2 [51]
 3 [76]
 4 [102]
 2, 3, 4 [51, 76, 102]
 2, 3, 4 [51, 76, 102]

(Specify size/type) OUTLET

_____ IC Inside Caulk
 _____ IG Inside Gasket
 _____ IP Threaded
 _____ IP Threaded
 _____ IP Threaded
 _____ NH No-Hub
 _____ NL Neo-Loc

'E' BODY HT. DIM.

3-7/8 [98]
 3-7/8 [98]
 2-3/8 [60]
 2-5/8 [67]
 2-7/8 [73]
 3-7/8 [98]
 3-3/4 [95]

PREFIXES

_____ ZB D.C.C.I. Body with Polished Bronze Strainer*
 _____ ZN D.C.C.I. Body with Polished Nickel Bronze Strainer

SUFFIXES

_____ -G Galvanized Cast Iron
 _____ -VP Vandal Proof Secured Top

* Regularly furnished unless otherwise specified.