



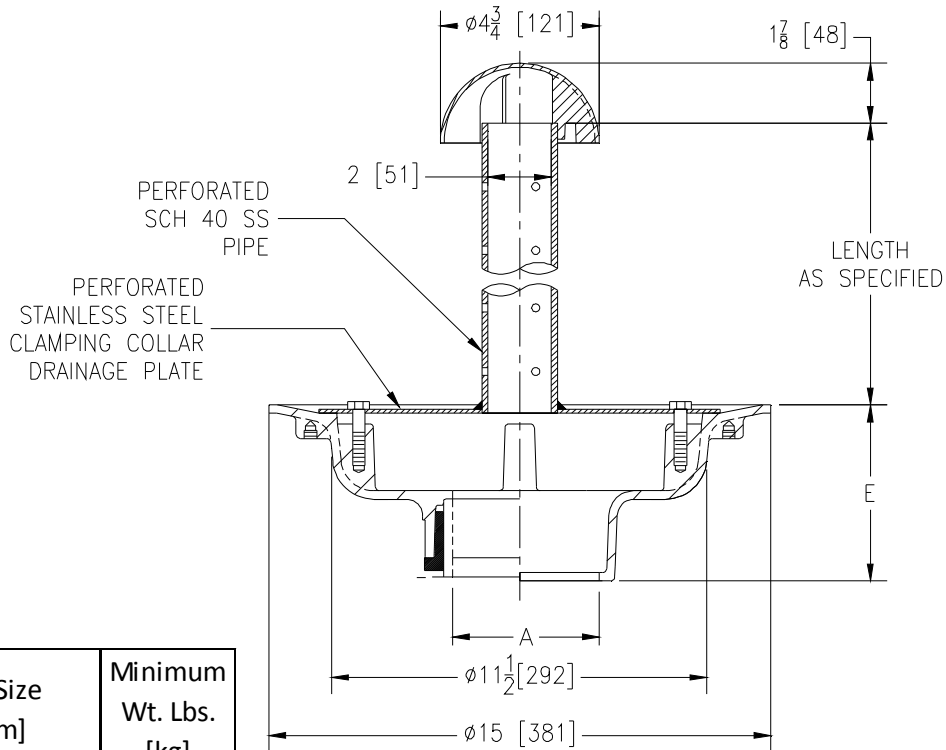
Z100-316

15 [381] DIAMETER MAIN ROOF DRAIN W/ STAINLESS STEEL PERFORATED PLATE, PERFORATED STANDPIPE & PLANTER DOME

SPECIFICATION SHEET

TAG _____

Dimensional Data (inches and [mm]) are Subject to Manufacturing Tolerances and Change Without Notice



A-Pipe Size In. [mm]	Minimum Wt. Lbs. [kg]
2, 3, 4 [51, 76, 102]	28 [13]
5, 6 [127, 152]	29 [13]
8 [203]	30 [14]
10 [254]	32 [15]

ENGINEERING SPECIFICATION: ZURN Z100-316

15" [381 mm] Diameter roof drain. Dura-Coated cast iron body with stainless steel perforated plate with 2" [51 mm] diameter perforated stainless steel standpipe and dome.

OPTIONS (Check/specify appropriate options)

PIPE SIZE

- 2,3,4,5,6,8 [51,76,102,127,152,203]
- 2,3,4,5,6,8 [51,76,102,127,152,203]
- 2,3,4,5,6,8,10 [51,76,102,127,152,203,254]
- 2,3,4 [51,76,102]

(Specify size/type) **OUTLET**

- _____ IC Inside Caulk
- _____ IP Threaded
- _____ NH No-Hub
- _____ NL Neo-Loc

E BODY HT. DIM.

- 5-1/4 [133]
- 3-3/4 [95]
- 5-1/4 [133]
- 4-5/8 [117]

PREFIXES

- _____ Z D.C.C.I. Body*

SUFFIXES

- | | |
|--|--|
| _____ -AC Angular Underdeck Clamp | _____ -G Galvanized Cast Iron |
| _____ -C Underdeck Clamp | _____ -R Roof Sump Receiver |
| _____ -DP Top-Set® Deck Plate (Replaces both the -C and -R) | _____ -TC Neo-Loc Test Cap Gasket
(2,3,4 [51,76,102] NL Bottom Outlet Only) |
| _____ -DR Top-Set® Drain Riser | _____ -XJ Vertical Expansion Joint (See Z190) |
| _____ -DX Dex-o-tex Flange | _____ -90 90° Threaded Side Outlet Body
(2,3,4,6 [51,76,102,152]) |
| _____ -E Static Extension 1 [25] thru 4 [102] (Specify Height) | |
| _____ -EA Adjustable Extension Assembly 1-3/4 [44] thru 3-1/2 [89] | |

* Regularly furnished unless otherwise specified.