



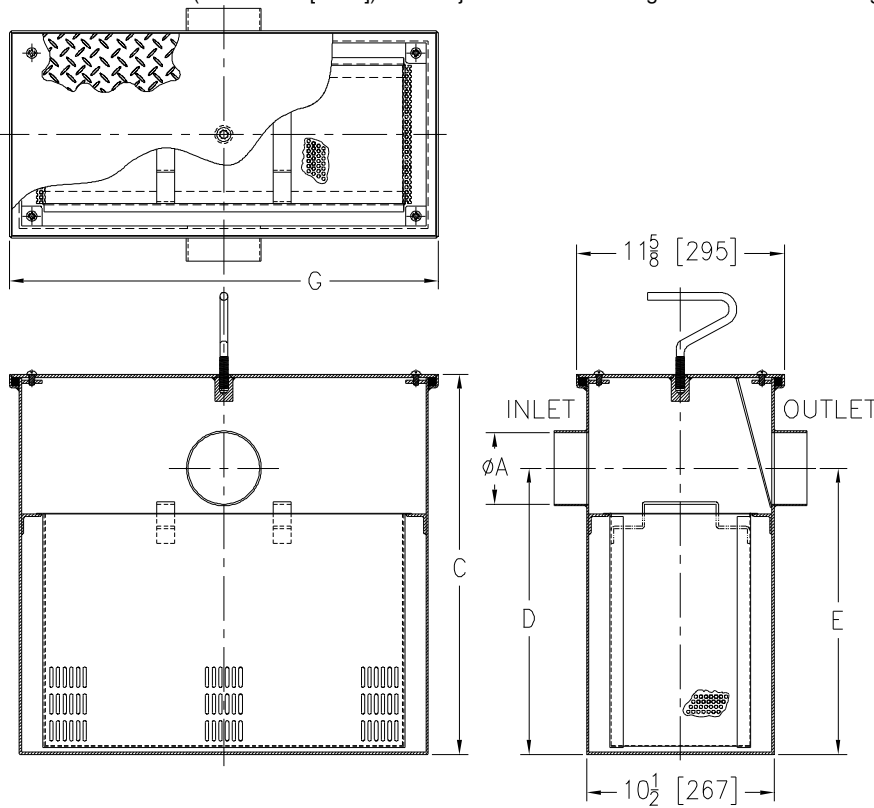
Z1183-87

SOLIDS INTERCEPTOR FOR TOP FLUSH WITH FLOOR INSTALLATION

SPECIFICATION SHEET

TAG _____

Dimensional Data (inches and [mm]) are Subject to Manufacturing Tolerances and Change Without Notice



Size	Inlet/Outlet Size	Flow Rate G.P.M. [L]	Solids Cap. Cubic Ft. [m ³]	Dimensions In Inches		
				C	G	D/E
100	2 [51]	4 [15]	0.20 [.006]	10 [254]	11 3/4 [298]	7 1/4 [184]
200	2 [51]	7 [26]	0.29 [.008]	11 1/8 [283]	13 3/4 [349]	8 1/8 [206]
300	3 [76]	10 [38]	0.33 [.009]	11 3/4 [298]	15 7/8 [403]	8 1/4 [210]
400	3 [76]	15 [57]	0.38 [.011]	13 3/8 [340]	18 5/8 [473]	9 3/8 [238]
500	3 [76]	20 [76]	0.66 [.019]	15 [381]	19 1/8 [488]	11 3/4 [298]
600	4 [102]	25 [95]	0.79 [.022]	17 [432]	21 3/4 [552]	12 7/16 [316]
700	4 [102]	35 [132]	1.17 [.033]	18 3/4 [476]	24 3/8 [619]	14 3/16 [360]
800	4 [102]	50 [189]	1.35 [.038]	21 1/8 [546]	24 3/8 [619]	16 [406]
900	4 [102]	75 [284]	1.61 [.046]	22 3/4 [578]	24 3/8 [619]	18 1/2 [470]
1200	4 [102]	150 [568]	2.11 [.060]	30 3/4 [781]	24 3/8 [619]	25 1/4 [641]

ENGINEERING SPECIFICATION: ZURN Z1183-87 Large capacity acid resistant coated interior and exterior fabricated steel, or stainless steel solids interceptor, for recessed installation with screen attached to gasketed, non-skid secured cover with lift handle, and removable sediment basket. Size to be used with corresponding Z1160, Z1170, Z1172 or Z1173 Grease Interceptors.

PREFIXES

- _____ Z Acid Resistant Coated Fabricated Steel*
- _____ ZS Type 304 Fabricated Stainless Steel

SUFFIXES

- _____ -CS Custom Screens (Specify material and perforation size required)
- _____ -E Acid Resistant Coated Interior and Exterior Fabricated Steel Extension Section.
- _____ -YR Replacement Stainless Steel Bucket Assembly

REV. A	DATE: 4/4/07	C.N. NO. 96444
DWG. NO. P-15241	PRODUCT NO. Z1183-87	

*REGULARLY FURNISHED UNLESS OTHERWISE SPECIFIED