



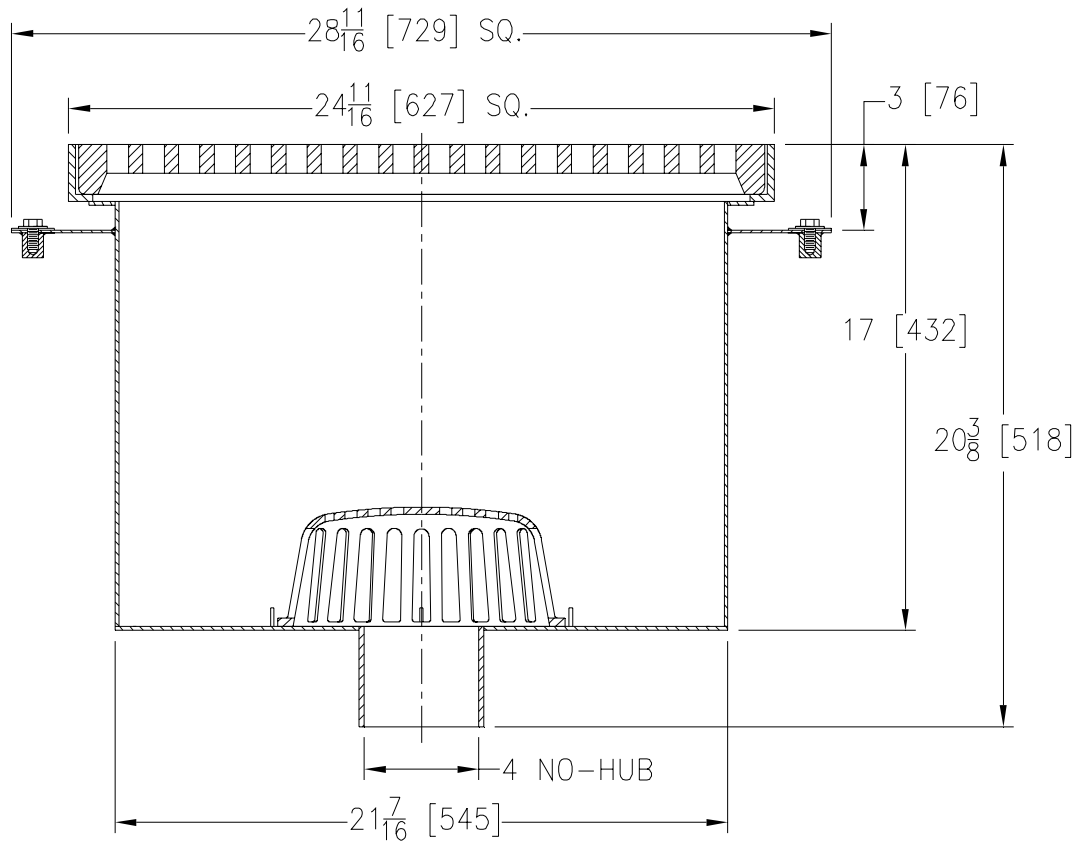
Z1995-83

SPECIFICATION SHEET

24 11/16 [627] SQ. A.R.C. SANI-FLOR RECEPTOR W/ 17 [432] SUMP & DOME STRAINER

TAG _____

Dimensional Data (inches and [mm]) are Subject to Manufacturing Tolerances and Change Without Notice



A Pipe Size	Approx Wt. Lbs. [kg]	Total Grate Open Area Sq. In. [cm ²]
4 [102]	115 [52]	256 [1652]

ENGINEERING SPECIFICATION: ZURN Z1995-83
Sani-Flor Receptor 24 11/16 [49] Square acid resistant epoxy coated fabricated steel body with integral anchor flange and clamp collar, two (2) A.R.C. cast iron heavy-duty loose set grates and removable dome strainer.

OPTIONS (Check/specify appropriate options)

PIPE SIZE

4 [102]

OUTLET

___ NH No-Hub

PREFIXES

___ Z Acid Resistant Coated Fabricated Steel Body*

SUFFIXES

___ -G All Galvanized Steel and Cast Iron

REV.	DATE: 2/24/06	C.N. NO. 94824
DWG. NO. P-15254 PRODUCT NO. Z1995-83		

*REGULARLY FURNISHED UNLESS OTHERWISE SPECIFIED