

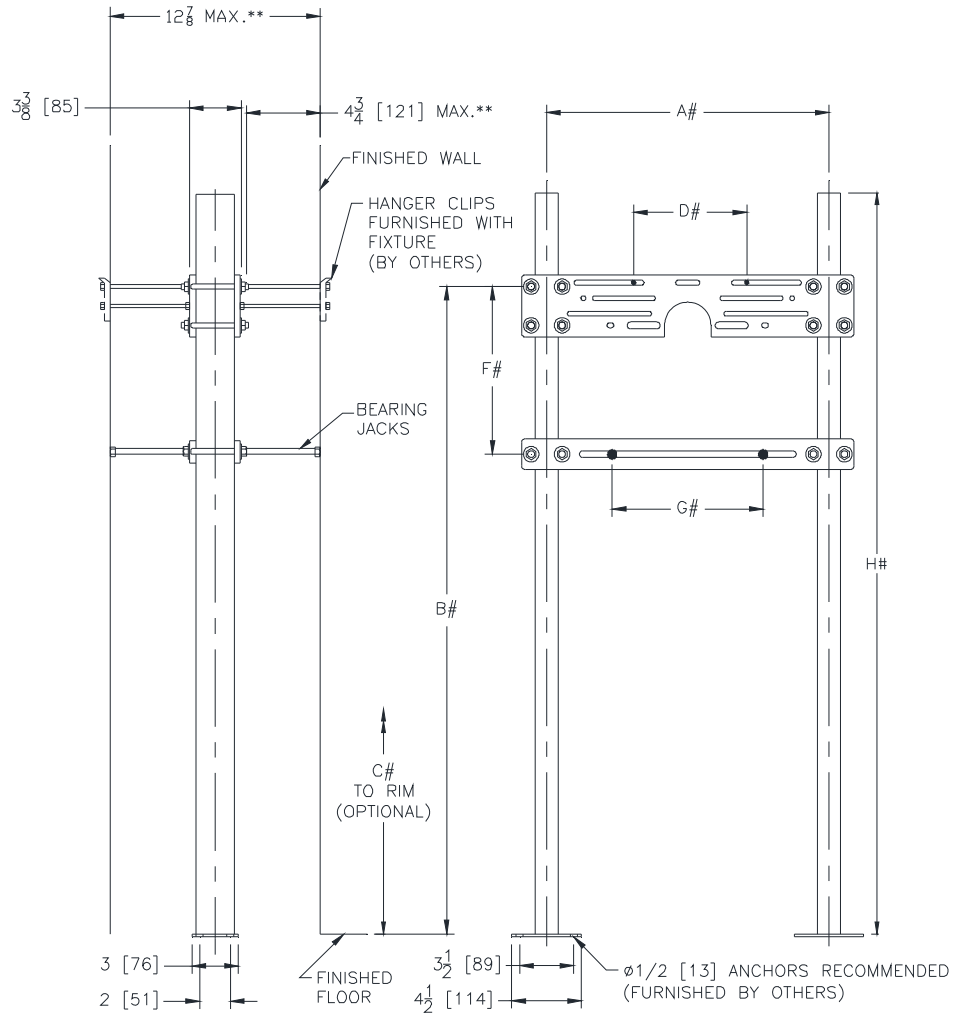


**Z1225-D**  
**PLATE TYPE SYSTEM**  
**WATER COOLERS**

**SPECIFICATION SHEET**

**TAG \_\_\_\_\_**

Dimensional Data (inches and [ mm ]) are Subject to Manufacturing Tolerances and Change Without Notice



NOTES:  
 #REFER TO ROUGH-IN GUIDE OF SPECIFIC FIXTURE FOR DIMENSION  
 \*\* WITH STANDARD STUD LENGTH OF 6 [152].

Product No.	Approx. Wt. Lbs. [kg]
Z1225-D	59 [27]

**ENGINEERING SPECIFICATION: ZURN Z1225-D**

Back to Back water cooler support system with top and bottom plates. Complete with Dura-Coated rectangular steel uprights with welded feet, adjustable support plates, and mounting fasteners.

**OPTIONS** (Check/specify appropriate options)

**PREFIXES**

\_\_\_\_\_ Z Dura-Coated System with Universal Plates\*

**SUFFIXES**

\_\_\_\_\_ -BL Bi-Level Cooler Support  
 \_\_\_\_\_ -CB Carrier Bank (Per Each)

\* Regularly furnished unless otherwise specified.