



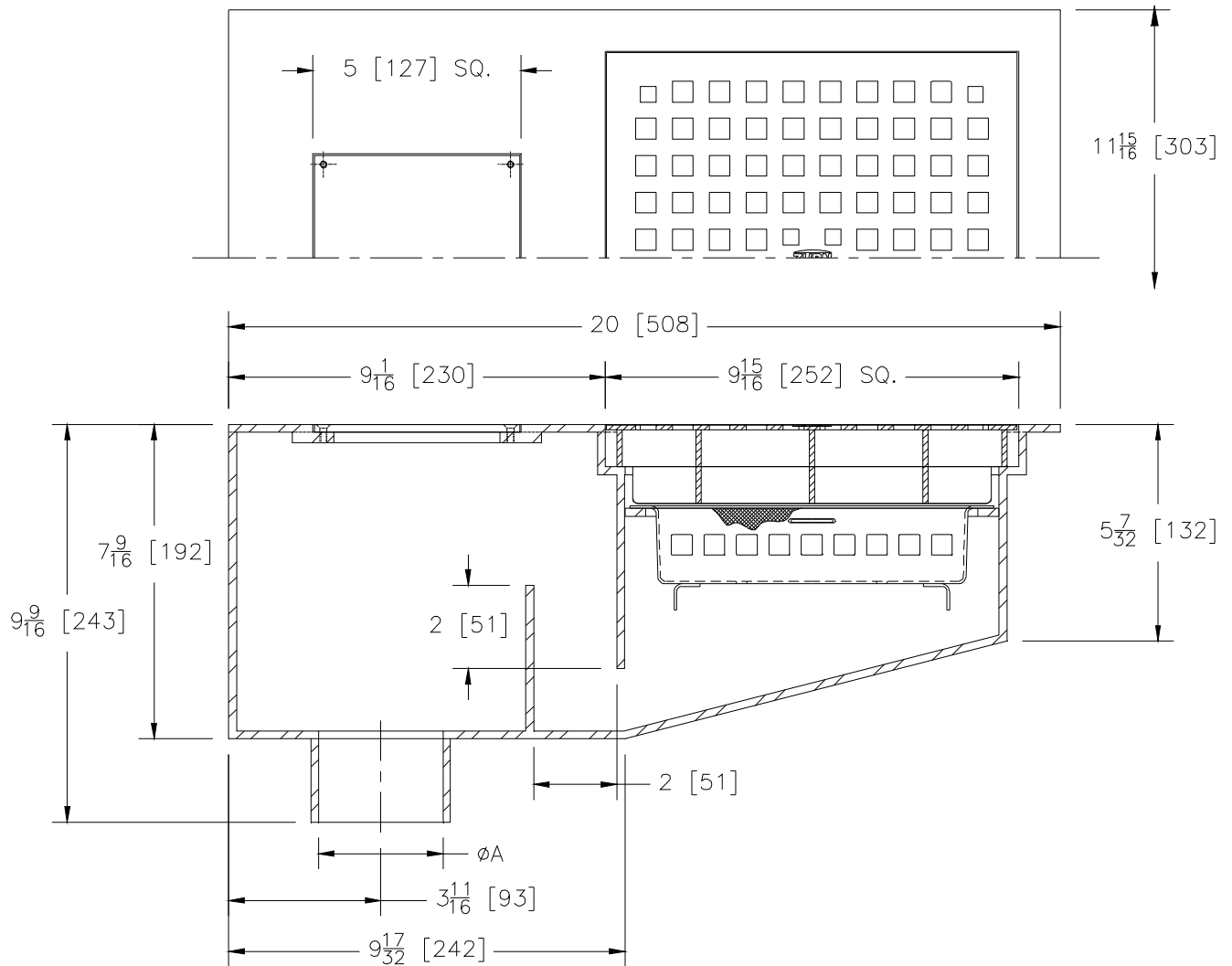
Z1762-82

HEAVY-DUTY COMBINATION DRAIN AND CLEANOUT WITH INTEGRAL TRAP AND SEDIMENT BUCKET

SPECIFICATION SHEET

TAG _____

Dimensional Data (inches and [mm]) are Subject to Manufacturing Tolerances and Change Without Notice



A - Pipe Size Inches [mm]	Approx. Wt. Lbs. [kg]	Grate Open Area Sq. In. [cm ²]
3,4,6 [76,102,152]	46 [21]	25 [161]

ENGINEERING SPECIFICATION: ZURNZS1762-82
 Type 304 (CF8) stainless steel fabricated body with 10" x 10" [254mm x 254mm] heavy-duty grate, 5" x 5" [127mm x 127mm] cleanout, integral trap and removable sediment bucket.

OPTIONS (Check/specify appropriate options)

PIPE SIZE

3, 4, 6 [76, 102, 152]

(Specify size/type) **OUTLET**

___ NH No-Hub

PREFIXES

- ___ ZS All Type 304 Fabricated Stainless Steel Body with Stainless Steel Top*
- ___ ZM All Type 316 Fabricated Stainless Steel Body with Stainless Steel Top

SUFFIXES

- ___ -K Anchor Flange
- ___ -KC Anchor Flange with Clamping Collar

* Regularly furnished unless otherwise specified.