



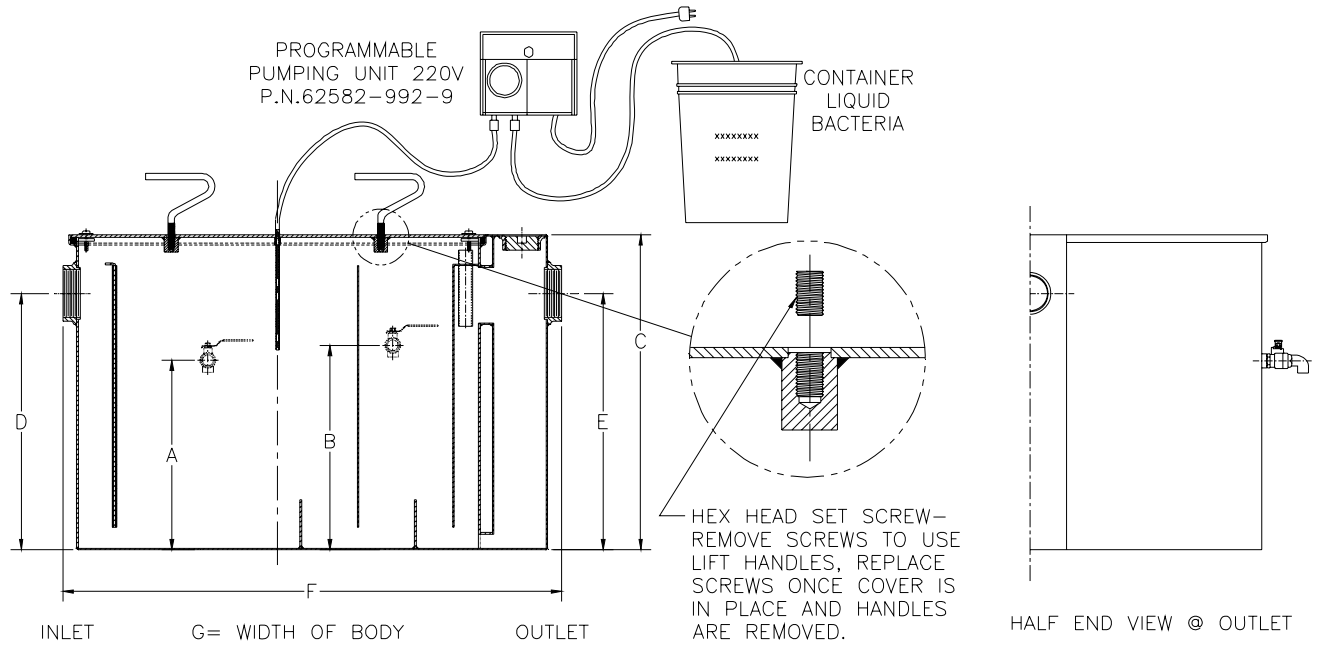
Z1172-156

LARGE CAPACITY GREASE INTERCEPTOR W/GREASE EATING BACTERIA DOSING UNIT AND DRAW OFF VALVES

SPECIFICATION SHEET

TAG _____

Dimensional Data (inches and [mm]) are Subject to Manufacturing Tolerances and Change Without Notice



Size	Inlet/Outlet Size	Flow Rate G.P.M. [L]	Capacity		No. of Covers	Approx. Wt. Lbs. [kg]	Dimensions in Inches			
			Water Gal. [L]	Grease Lbs. [kg]			C	D/E	F	G
1000	4 [102]	100 [378]	110 [416]	200 [91]	1	408 [185]	27 [686]	23 [584]	42 3/4 [1086]	33 5/8 [854]

ENGINEERING SPECIFICATION: ZURN Z1172-156

Large capacity Acid Resistant Coated interior and exterior fabricated steel grease interceptor, rated at ___ GPM and ___ Lbs. grease capacity, with internal air relief by-pass, bronze cleanout plug and visible double wall trap seal with removable pressure equalizing/flow diffusing baffle and dual side 3/4 NPS grease draw-off valves located in both grease separation chamber. Gasketed non-skid secured cover with removable lift handles, complete with flow control fitting. Furnished with 220vac programmable pumping unit, pump mounting hardware, 30'[9144] of poly tubing and 5 gal.[19] of grease eating bacteria. Regularly furnished with inlet and outlet in high position.

OPTIONS (Check/specify appropriate options)

PREFIXES

- ___ Z Acid Resistant Coated Fabricated Steel*
- ___ ZS All Type 304 Fabricated Stainless Steel

SUFFIXES

- ___ -1 1 gal.[4] Grease Eating Bacteria only
- ___ -5 5 gal.[19] Grease Eating Bacteria only
- ___ -L Angle type (Z1108-L) flow control device.
- ___ -P Pump only, 220vac
- ___ -RK Retrofit kit, pump and bacteria (5 gal.[19]) only

*REGULARLY FURNISHED UNLESS OTHERWISE SPECIFIED

REV.	DATE: 10/1/09	C.N. NO. 110266
DWG. NO. P-15773	PRODUCT NO. Z1172-156	