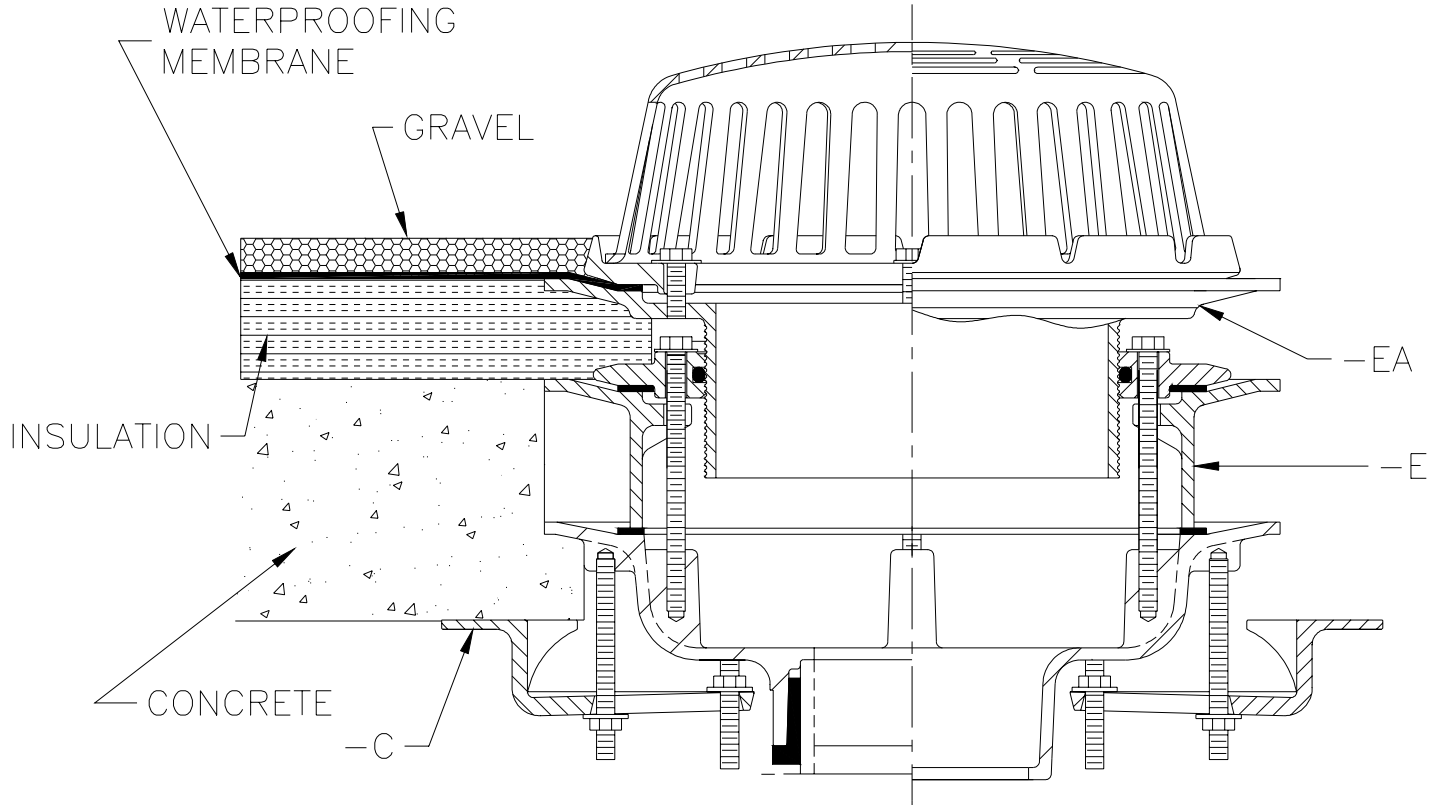




TYPICAL INSTALLATION FOR Z-100-C-E-EA THICK CONCRETE DECK WITH INSULATION

Dimensional Data (inches and [mm]) are Subject to Manufacturing Tolerances and Change Without Notice



Z-100-C-E-EA THICK CONCRETE DECK WITH INSULATION

Drain installed in an insulated concrete deck. Drain is illustrated with underdeck clamp (-C), static extension (-E) and adjustable extension assembly (-EA). This drain allows over 2 [51] of adjustment for varying insulation thicknesses.

Form # RD11

Date: 8/4/99

C.N. No. 83024

Rev.

ZURN INDUSTRIES, INC. ♦ SPECIFICATION DRAINAGE OPERATION ♦ 1801 Pittsburgh Ave. ♦ Erie, PA 16514

Phone: 814/455-0921 ♦ Fax: 814/454-7929 ♦ World Wide Web: www.zurn.com

In Canada: ZURN INDUSTRIES LIMITED ♦ 3544 Nashua Drive ♦ Mississauga, Ontario L4V1L2 ♦ Phone: 905/405-8272 Fax: 905/405-1292