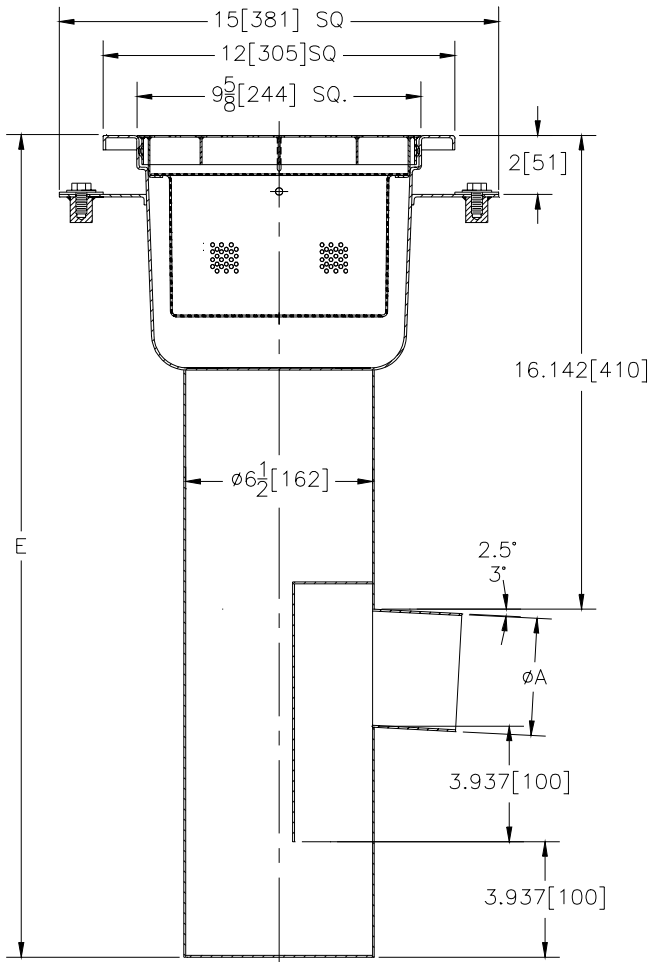




Z-1750-103
12 X 12 [305 x 305] SANI-FLOR RECEPTOR

TAG _____

Dimensional Data (inches and [mm]) are Subject to Manufacturing Tolerances and Change Without Notice



A Pipe Size	Bucket Open Area Sq. In. [cm ²]	Approx. Wt. Lbs. [kg]	Grate Open Area Sq. In. [cm ²]
4 [102]	85 [548]	55 [25]	23 [148]
6 [152]	85 [548]	60 [27]	23 [148]

ENGINEERING SPECIFICATION: ZURN Z-1750-103
 12 x 12 [305 x 305], 14 gage, All Type 304 (CF8) Stainless Steel medium duty Sani-Flor receptor with seepage pan, clamp collar and non-tilt, loose set full grate with 1/2 [13] square openings and suspended perforated sediment bucket.

OPTIONS (Check/specify appropriate options)

PIPE SIZE

- 4 [102]
- 6 [152]

(Specify size/type) **OUTLET**

- _____ NH No-Hub
- _____ NH No-Hub

'E' BODY HT. DIM.

- 28 [711]
- 30 [762]

PREFIXES

- _____ Z- Type 304 (CF8) Stainless Steel Body*
- _____ ZM- Type 316 (CF8M) Stainless Steel

SUFFIXES

- _____ -DX Dexotex Flange
- _____ -HD Extra Heavy Duty Top Frame & Grate
- _____ -HP Heelproof Grate
- _____ -1 (Less) Grate
- _____ -2 1/2 Grate
- _____ -3 3/4 Grate
- _____ -4 Full Grate With 3 [76] Square Center Opening
- _____ -5 Grate w/4 [102] dia. x 3 3/4 [95] High Funnel
- _____ -8 Grate w/8 3/8 x 3 5/8 x 3 3/4 [213 x 92 x 95] High Oval Funnel
- _____ -15 Solid Cover
- _____ -16 1/2 Solid Cover
- _____ -17 3/4 Solid Cover
- _____ -18 Solid Cover With 3 [76] Square Center Opening

*REGULARLY FURNISHED UNLESS OTHERWISE SPECIFIED

REV.	DATE: 5/20/97	C.N. NO. 77928
DWG. NO. P-14471 PRODUCT NO. Z-1750-103		