



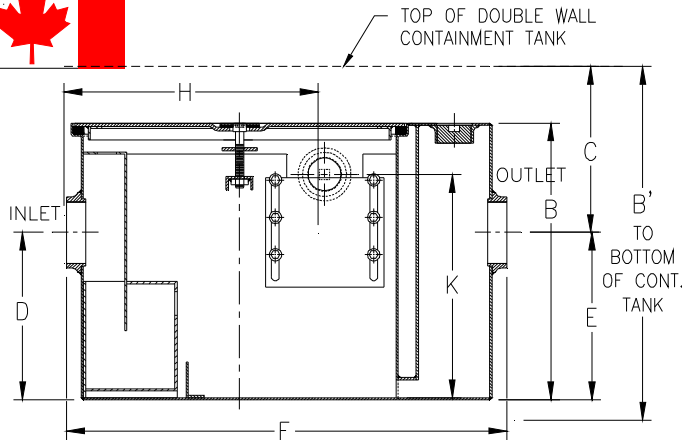
Z1186-ST-98

OIL INTERCEPTOR W/ INTEGRAL STORAGE TANK AND DOUBLE WALL CONTAINMENT TANK

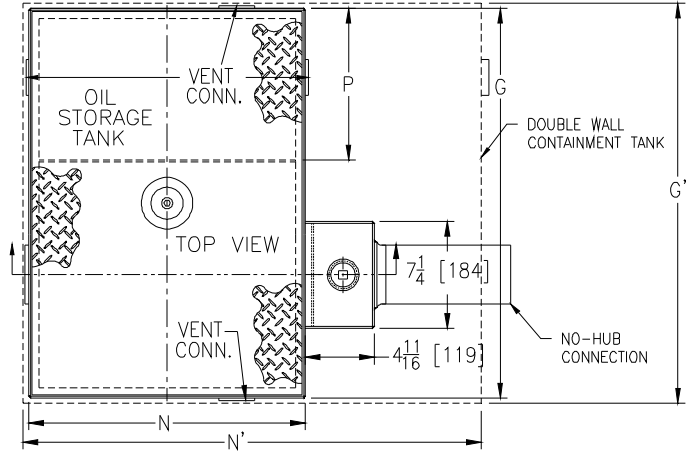
SPECIFICATION SHEET

TAG _____

Dimensional Data (inches and [mm]) are Subject to Manufacturing Tolerances and Change Without Notice



**Note: 'B' dimension - Overall Height
See Suffix -E for Extension.**



Size	Inlet/Outlet Size**	Flow Rate G.P.M./ L.P.M.	Water Capacity Gal. [L]	Approx. Wt. Lbs. [Kg.]	Oil Storage Tank Cap. Gal. [L]	No. of Covers
300	2 [51]	10 [38]	7 [26]	95 [43]	6 [22]	1
400	2 [51]	15 [57]	9 [34]	95 [43]	6 [22]	1
500	3 [76]	20 [76]	10 [38]	115 [52]	8 [30]	1
600	3 [76]	25 [95]	16 [61]	280 [61]	55 [208]	2
700	3 [76]	35 [132]	21 [79]	320 [145]	55 [208]	2
800	3 [76]	50 [189]	30 [114]	529 [240]	125 [473]	3

Size	Dimension in Inches [mm]											
	B	B'	C	D/E	F	G	G'	H	K	N	N'	P
300	13-7/8 [352]	18-7/8 [479]	10-3/4 [146]	8-1/8 [206]	23-1/16 [586]	23-9/16 [598]	35-9/16 [903]	12-1/16 [306]	11 [279]	16-7/8 [429]	35-5/8 [905]	10-1/8 [257]
400	14 [356]	19 [483]	10-3/4 [146]	8-1/4 [210]	23-1/16 [586]	23-9/16 [598]	35-9/16 [903]	12-1/16 [306]	11 [279]	16-7/8 [429]	35-5/8 [905]	10-1/8 [257]
500	15-1/2 [394]	20-1/2 [521]	11-1/8 [156]	9-3/8 [238]	25-1/16 [637]	26-1/2 [673]	38-1/2 [978]	14-3/16 [360]	12-1/2 [318]	18-7/8 [479]	37-5/8 [956]	10-5/16 [262]
600	18-1/4 [464]	23-1/4 [591]	11-1/2 [165]	11-3/4 [298]	35-7/32 [895]	50-7/8 [1292]	62-7/8 [1597]	19-1/4 [486]	15-1/8 [387]	29 [737]	47-3/4 [1213]	34-3/16 [868]
700	19-3/4 [502]	24-3/4 [629]	12-5/16 [186]	12-7/16 [316]	43-7/16 [1103]	45 [1143]	57 [1448]	23-1/4 [591]	16-3/4 [425]	37 [940]	55-3/4 [1416]	25-11/16 [352]
800	24-1/4 [616]	29-1/4 [743]	15 [254]	14-3/16 [360]	49-7/16 [1256]	70-1/8 [1781]	82-1/8 [2086]	26-1/4 [667]	21-1/4 [540]	43 [1092]	61-3/4 [1568]	48-1/4 [1225]

ENGINEERING SPECIFICATION: ZURN Z1186-ST-98

Dura Coated interior and exterior fabricated steel oil interceptor, with bronze cleanout plug and visible double wall trap seal, removable combination pressure equalizing/flow diffusing baffle and sediment bucket, oil drawoff, vent connections, secured gasketed non-skid cover and left hand integral storage tank and double wall containment tank. Regularly furnished with inlet and outlet in high position.

Note: location of outlet from bottom of interceptor cannot be changed.

OPTIONS (Check/specify appropriate options)

PREFIXES

- ___ Z Dura Coated Fabricated Steel*
- ___ ZS All Type 304 Fabricated Stainless Steel w/ Aluminum Cover
- ___ ZSS All Type 304 Fabricated Stainless Steel w/ Stainless Steel Cover

NOTE: Location of outlet from bottom of Interceptor cannot be changed. Regularly furnished with left-hand side storage tank

SUFFIXES

- ___ -AR Acid Resistant Epoxy Coated Finish
- ___ -E Dura Coated interior and exterior fabricated steel section. (Specify 'C' Dim. required) for recessed installation
- ___ -HD Heavy duty traffic cover rated at 10,000 lbs. [4536 kg.] maximum safe live load.
- ___ -K Anchor flange 1-3/4 [44] down from top and 2 [51] wide.
- ___ -KC Anchor flange 1-3/4 [44] down from top and 2 [51] wide with clamp collar.
- ___ -STR Storage tank on right hand side when facing the inlet.

REV. A	DATE: 03/26/12	C.N. NO. 124106
DWG. NO. 308600	PRODUCT NO. Z1186-ST-98	

*REGULARLY FURNISHED UNLESS OTHERWISE SPECIFIED