

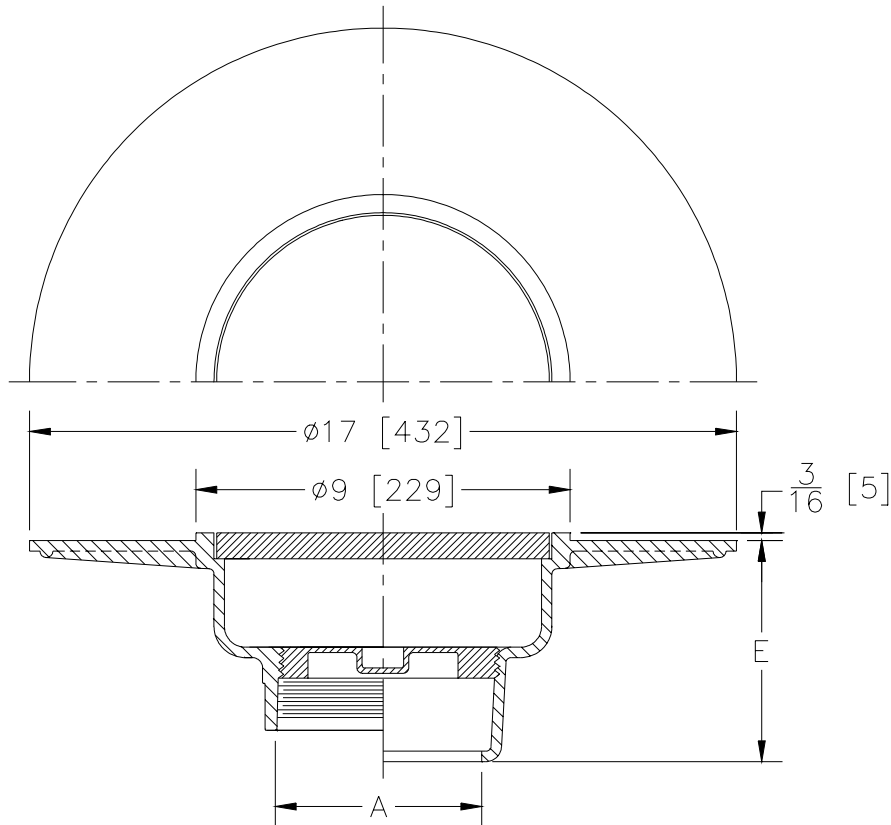


# Z-530-80

## DECK DRAIN WIDE FLANGE

TAG \_\_\_\_\_

Dimensional Data (inches and [ mm ]) are Subject to Manufacturing Tolerances and Change Without Notice



A- Pipe Size In.	Approx. Wt. Lbs. [kg]
2-3-4 [50-75-100]	49 [22]

**ENGINEERING SPECIFICATION:** ZURN Z-530-80 9 [229] Top wide flange deck drain for latex decks, Dura-Coated cast iron body with latex troweling flange, solid cover and gas and watertight ABS tapered thread plug.

**OPTIONS** (Check/specify appropriate options)

**PIPE SIZE**

- 2, 3, 4, [50, 75, 100]
- 2, 3, 4, [50, 75, 100]
- 2, 3, 4, [50, 75, 100]

(Specify size/type) **OUTLET**

- \_\_\_\_\_ IC Inside Caulk
- \_\_\_\_\_ IG Inside Caulk w/Sealtrol Gskt.
- \_\_\_\_\_ IP Threaded

**'E' BODY HT. DIM.**

- 5 1/2 [140]
- 5 1/2 [140]
- 4 [102]

**PREFIXES**

- \_\_\_\_\_ Z- D.C.C.I. Body and Cover\*

**SUFFIXES**

- \_\_\_\_\_ -C Underdeck Clamp
- \_\_\_\_\_ -G Galvanized Cast Iron
- \_\_\_\_\_ -VP Vandal Proof Secured Top

REV.	DATE: 1/5/96	C.N. NO. 73809
DWG. NO. P-14277		PRODUCT NO. Z-530-80

\*REGULARLY FURNISHED UNLESS OTHERWISE SPECIFIED