

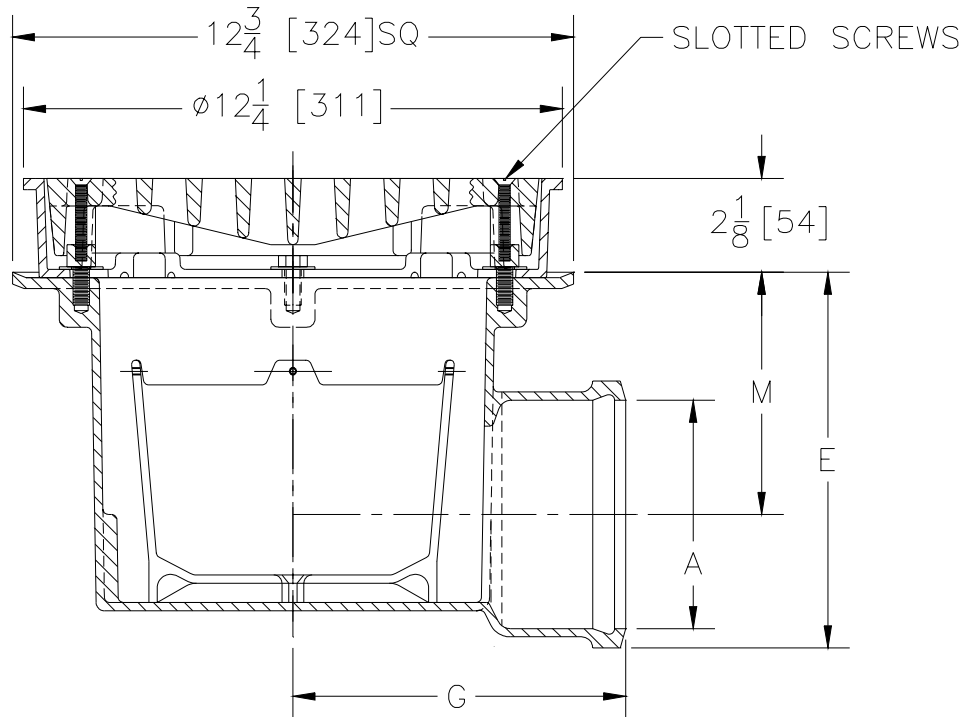


Z-512-78

12" [305] HEAVY DUTY DRAIN WITH TRACTOR GRATE

TAG _____

Dimensional Data (inches and [mm]) are Subject to Manufacturing Tolerances and Change Without Notice



| A- Pipe Size In. | Approx. Wt. Lbs. [kg] | Grate Open Area Sq. In. [cm ²] | A | G | M |
|------------------|-----------------------|--|--------------|--------------|-------------|
| 3 [75] | 44 [20] | 50 [323] | 4 3/16 [106] | 7 5/16 [186] | 6 [165] |
| 4 [100] | 44 [20] | 50 [323] | 5 3/16 [132] | 7 9/16 [192] | 5 1/2 [140] |
| 6 [152] | 44 [20] | 50 [323] | 7 3/16 [183] | 8 [203] | 4 1/2 [114] |

ENGINEERING SPECIFICATION: ZURN Z-512-78 12 [305] Diameter top heavy duty drain, Dura-Coated cast iron deep sump body with side outlet, seepage pan and combination flashing clamp and frame, secured heavy duty Duresist tractor grate and standing aluminum bucket.

OPTIONS (Check/specify appropriate options)

PIPE SIZE

(Specify size/type) **OUTLET**

'E' BODY HT. DIM.

| | | | |
|---------|----------|--------------|---------------|
| 3 [75] | _____ IC | Inside Caulk | 8 17/32 [217] |
| 4 [75] | _____ IC | Inside Caulk | 8 17/32 [217] |
| 6 [152] | _____ IC | Inside Caulk | 8 17/32 [217] |

PREFIXES

- _____ Z- D.C.C.I. Body and Grate*
- _____ ZB- D.C.C.I. Body with Polished Bronze Grate (Add 3/16 [5] to 2 1/8 [54] Dim.)
- _____ ZN- D.C.C.I. Body with Polished Nickel Bronze Grate (Add 3/16 [5] to 2 1/8 [54] Dim.)

SUFFIXES

- _____ -F Extension
- _____ -G Galvanized Cast Iron
- _____ -P Trap Primer Connection
- _____ -SC Solid Cover
- _____ -VP Vandal Proof Screws
- _____ -Y Suspended Sediment Bucket

| | | |
|---------------------------------------|----------------|----------------|
| REV. | DATE: 05/30/97 | C.N. NO. 77986 |
| DWG. NO. P-14478 PRODUCT NO. Z-512-78 | | |

*REGULARLY FURNISHED UNLESS OTHERWISE SPECIFIED