



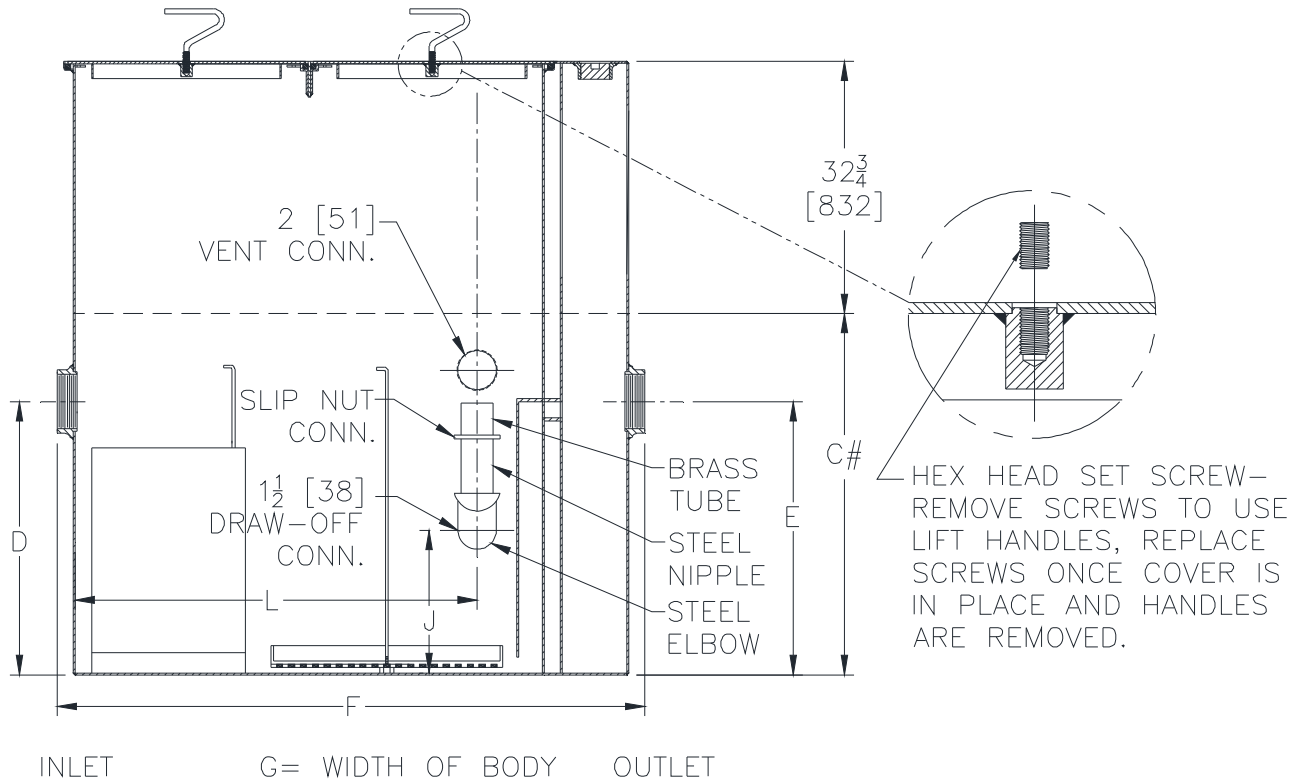
Z1188-178

SIZE 200 LARGE CAPACITY OIL INTERCEPTOR W/
32-3/4 [832] EXTENSION & HEAVY-DUTY COVER

SPECIFICATION SHEET

TAG _____

Dimensional Data (inches and [mm]) are Subject to Manufacturing Tolerances and **** Change Without Notice**
** Location of inlet must be maintained at the 'D' dimension listed for each size.



Flow Rate GPM[L] Min	Inlet/ Outlet Size	Water Capacity Gal. [L]	App. Wt. Lbs. [Kg]	No. of Covers	Dimensions In Inches					
					C #	D/E	F	G	J	L
200 [757]	4 [102]	265 [1003]	1055 [478]	2	35-1/2 [902]	29-7/8 [759]	61 [1549]	43-5/8 [2286]	17-3/4 [451]	46-5/8 [1184]

ENGINEERING SPECIFICATION: ZURN Z1188-178

Large capacity Acid Resistant Coated interior and exterior fabricated steel oil interceptor, with bronze cleanout plug and visible double wall trap seal, removable combination pressure equalizing/flow diffusing baffle and sediment bucket, horizontal baffle, adjustable oil drawoff and vent connections either side. Secured gasketed non-skid heavy-duty traffic cover rated at 10,000 lbs [4536 Kg.] maximum safe live load with removable lift handles and flow control fitting. Acid resistant coated interior and exterior fabricated steel extension built integral to the interceptor body. Regularly furnished with inlet and outlet in high position.

OPTIONS (Check/specify appropriate options)

PREFIXES

___ **Z** Acid Resistant Coated Fabricated Steel*

SUFFIXES

- ___ **-K** Anchor flange 1-3/4 [44] down from top and 2 [51] wide. No extension required to accommodate -K.
- ___ **-KC** Anchor flange 1-3/4 [44] down from top and 2 [51] wide with clamp collar. No extension required to accommodate -KC.

'C' dim's shown are standard interceptor heights.
Add extension height needed to obtain overall
'C' as specified.

* Regularly furnished unless otherwise specified.