

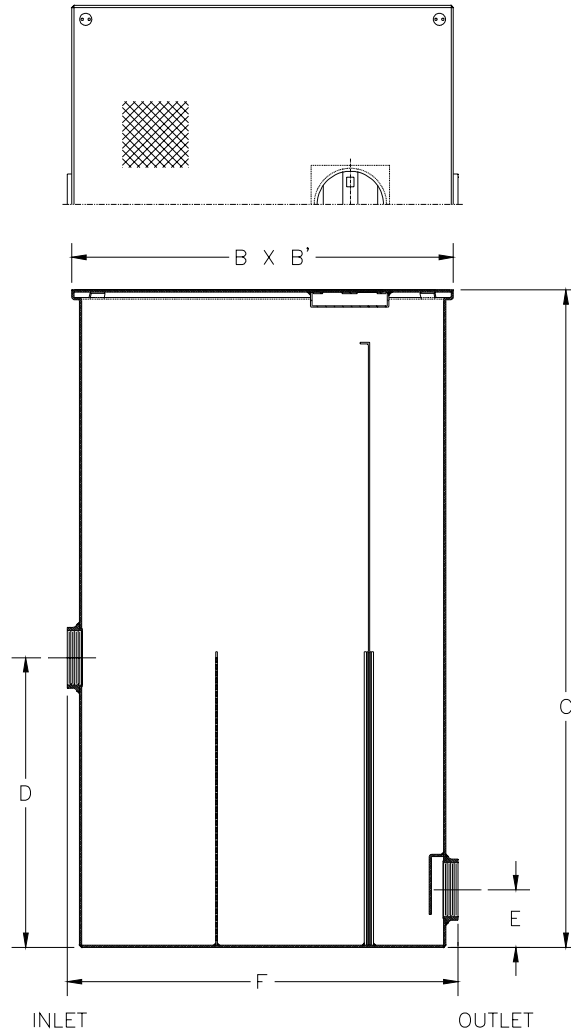


# Z1185-98 LINT INTERCEPTOR

SPECIFICATION SHEET

TAG \_\_\_\_\_

Dimensional Data (inches and [ mm ]) are Subject to Manufacturing Tolerances and Change Without Notice



| Size No. of Machines | Inlet/Outlet Size** | Flow Rate G.P.M. [L] | Approx. Wt. Lbs. [kg] | Dimensions In Inches |          |           |          |         |          |
|----------------------|---------------------|----------------------|-----------------------|----------------------|----------|-----------|----------|---------|----------|
|                      |                     |                      |                       | B                    | B'       | C         | D        | E       | F        |
| 10                   | 4 [102]             | 100 [379]            | 414 [188]             | 33 [838]             | 33 [838] | 69 [1753] | 25 [635] | 4 [102] | 34 [864] |

**ENGINEERING SPECIFICATION:** ZURN Z1185-98 Acid Resistant Coated interior and exterior fabricated steel lint interceptor, non-skid vandal-proof secured cover, with stainless lint intercepting secondary screen assembly and permanent primary straining baffle. Regularly furnished with high inlet and low outlet.

**OPTIONS** (Check/specify appropriate options)

**PREFIXES**

\_\_\_\_ Z Acid Resistant Coated Fabricated Steel\*

**SUFFIXES**

\_\_\_\_ RS- Stainless Steel Screen Replacement Assembly

|                  |               |                      |  |
|------------------|---------------|----------------------|--|
| REV.             | DATE: 6/23/05 | C.N. NO. 93562       |  |
| DWG. NO. P-15171 |               | PRODUCT NO. Z1185-98 |  |

\*REGULARLY FURNISHED UNLESS OTHERWISE SPECIFIED