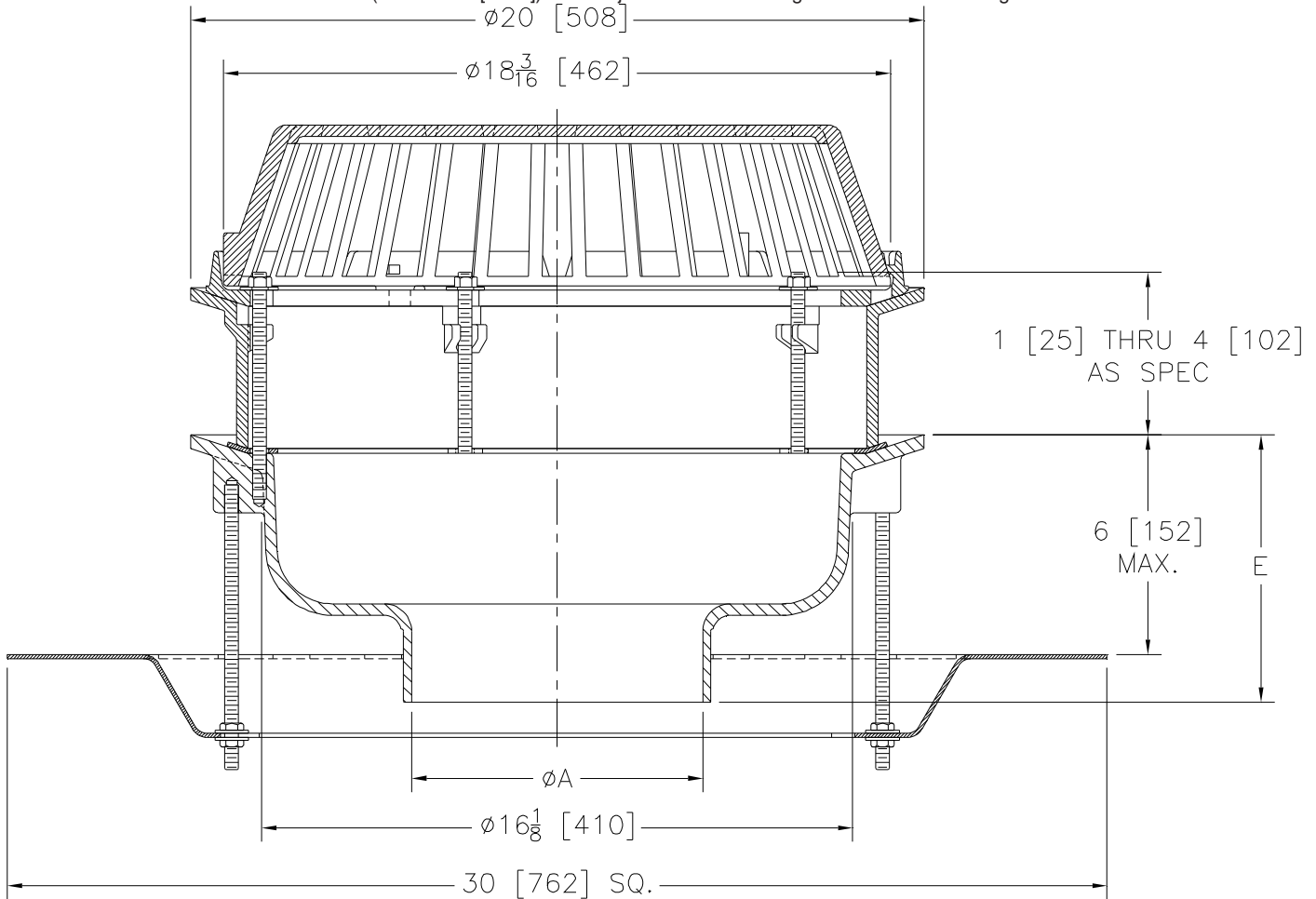




# Z101-E-EB

20 [508] DIAMETER MAIN ROOF DRAIN WITH STATIC EXTENSION & TOP-SET® ADJUSTABLE EXTENSION ASSEMBLY

Dimensional Data (inches and [ mm ]) are Subject to Manufacturing Tolerances and Change Without Notice



A- Pipe Size In.[mm]	Approx. Wt. Lbs. [kg]	Dome Open Area Sq. In. [cm <sup>2</sup> ]
8 [203]	110 [50]	216 [1394]
10 [254]	111 [50]	
12 [305]	112 [51]	

**ENGINEERING SPECIFICATION: ZURNZ101-E-EB**  
 20" [508mm] Diameter roof drain. Dura-Coated cast iron body with combination membrane flashing clamp/gravel guard, static extension, low silhouette cast iron dome & Top-Set® adjustable extension assembly.

**PIPE SIZE** (Specify size/type) **OUTLET** **E BODY HT. DIM.**  
 8, 10, 12 [203, 254, 305] \_\_\_\_\_ NH No-Hub 7-5/16 [185]

**PREFIXES**  
 \_\_\_\_\_ Z D.C.C.I. Body with Cast Iron Dome

**SUFFIXES**  
 \_\_\_\_\_ -AR Acid Resistant Epoxy Coated  
 \_\_\_\_\_ -G Galvanized Cast Iron  
 \_\_\_\_\_ -W2 2 [51] Internal Water Dam  
 \_\_\_\_\_ -W3 3 [76] Internal Water Dam  
 \_\_\_\_\_ -W4 4 [102] Internal Water Dam  
 \_\_\_\_\_ -89 2 [51] High External Water Dam

\* Regularly furnished unless otherwise specified.