



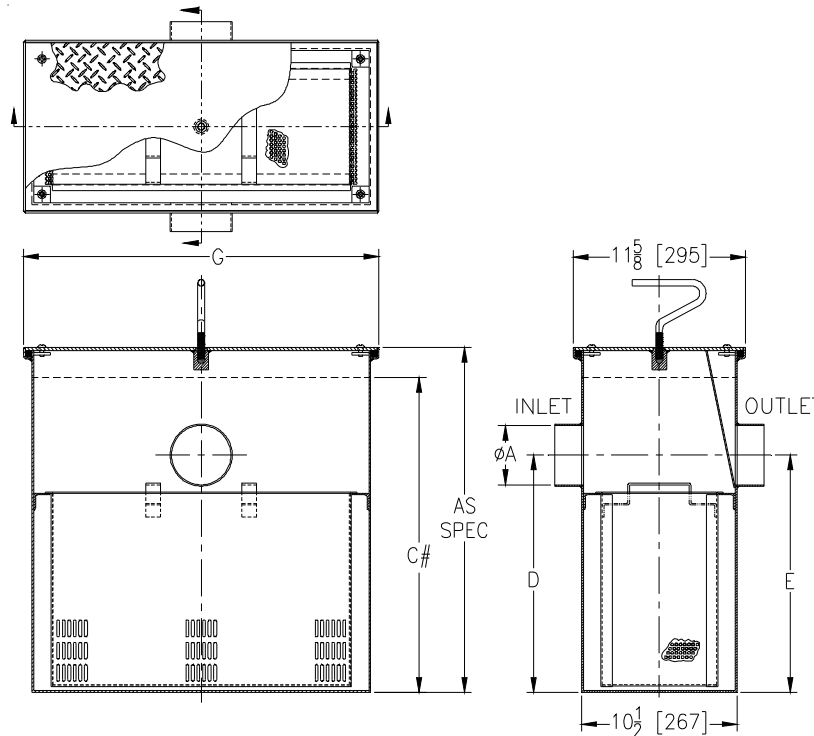
Z1183-FC-84

#800 SOLIDS INTERCEPTOR WITH FLUSH COVER, EXTENSION, & 4 [102] INLET & OUTLET

SPECIFICATION SHEET

TAG _____

Dimensional Data (inches and [mm]) are Subject to Manufacturing Tolerances and Change Without Notice



Size	'A' Inlet/Outlet Size	Flow Rate G.P.M. [L]	Solids Cap. Cubic Ft. [m ³]	Dimensions In Inches		
				C#	G	D/E
800	4 [102]	50 [189]	1.35 [.038]	21 1/8 [546]	24 3/4 [298]	16 [406]

ENGINEERING SPECIFICATION: ZURNZ1183-FC-84

Large capacity acid resistant coated interior and exterior fabricated steel, or stainless steel solids interceptor, with 4 [102] connections, for recessed installation with integral extension, screen attached to gasketed, non-skid secured cover with removable lift handle, and removable sediment basket. Size to be used with corresponding Z1170, Z1172 or Z1173 Grease Interceptors.

OPTIONS (Check/specify appropriate option)

PREFIXES

- ___ Z Acid Resistant Coated Fabricated Steel*
- ___ ZS Type 304 Fabricated Stainless Steel

SUFFIXES

- ___ -CS Custom Screens (Specify material and perforation size required)
- ___ -YR Replacement Stainless Steel Bucket Assembly

#'C' Dim's. shown are standard interceptor heights. Add extension height to obtain overall 'C' specified.

*REGULARLY FURNISHED UNLESS OTHERWISE SPECIFIED

REV.	DATE: 06/15/11	C.N. NO. 121426
DWG. NO. 306289	PRODUCT NO. Z1183-FC-84	