



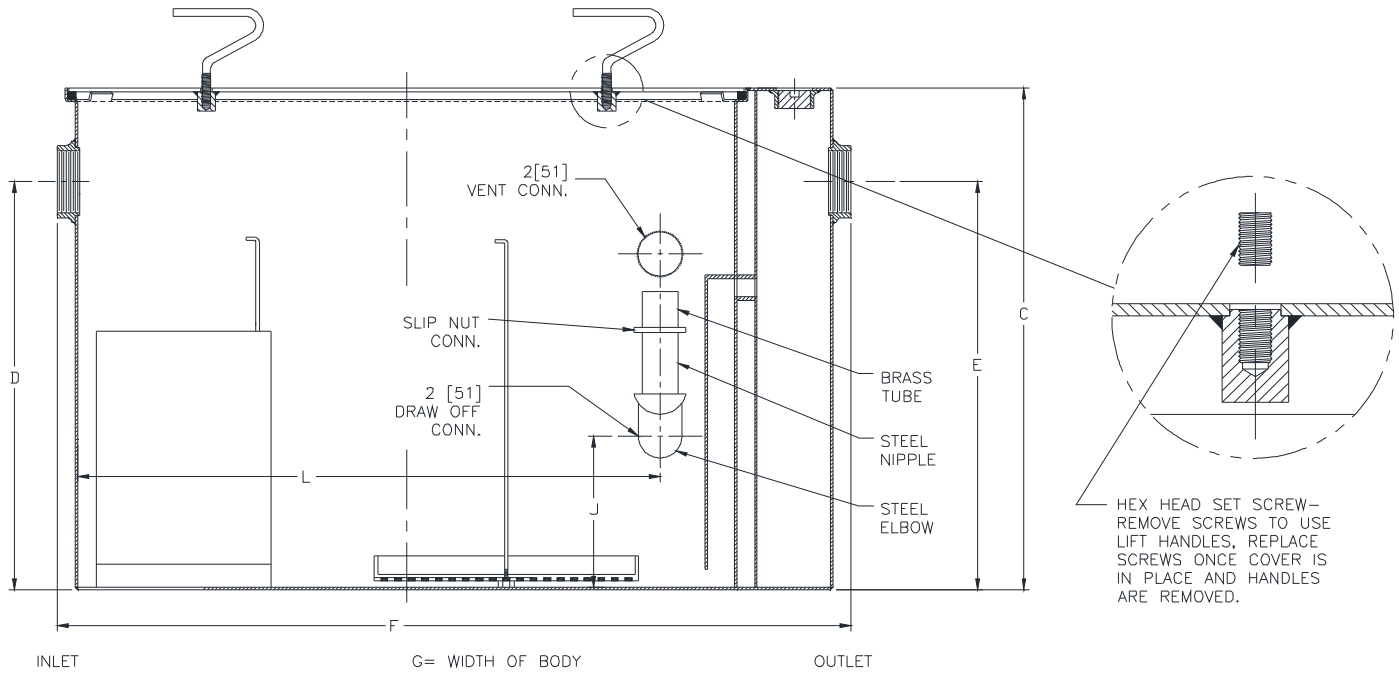
Z1188-174

100 GPM [379 LPM] LARGE CAPACITY OIL INTERCEPTOR WITH 6 [152] INLET / OUTLET

SPECIFICATION SHEET

TAG _____

Dimensional Data (inches and [mm]) are Subject to Manufacturing Tolerances and Change Without Notice



Flow Rate GPM [LPM]	Inlet / Outlet Size In. [mm]	Water Capacity Gal. [L]	Aprox. Wt. Lbs. [kg]	No. of Covers	Dimensions in Inches [mm]					
					C	D / E	F	G	J	L
100 [379]	6 [152]	110 [416]	432 [196]	1	30 [762]	24-1/2 [622]	42-3/4 [1086]	33-5/8 [854]	11-3/8 [289]	30-1/8 [765]

ENGINEERING SPECIFICATION: ZURN Z1188-174

Large capacity acid resistant coated interior and exterior fabricated steel oil interceptor, with bronze cleanout plug and visible double wall trap seal, removable combination pressure equalizing/flow diffusing baffle and sediment bucket, horizontal baffle, adjustable oil drawoff and vent connections either side. Secured gasketed non-skid cover complete with flow control fitting. Regularly furnished with 6" [152mm] inlet and outlet in high position.

OPTIONS (Check/specify appropriate options)

PREFIXES

___ Z Acid Resistant Coated Fabricated Steel*

SUFFIXES

- ___ -E Acid resistant coated interior and exterior fabricated steel extension section. (Specify 'C' Dim. required) for recessed installation.
- ___ -HD Heavy-duty traffic cover rated at 10,000 lbs [4536] kg. maximum safe live load.
- ___ -K Anchor flange 1-3/4 [44] down from top and 2 [51] wide. No extension required to accommodate -K.

* Regularly furnished unless otherwise specified.