



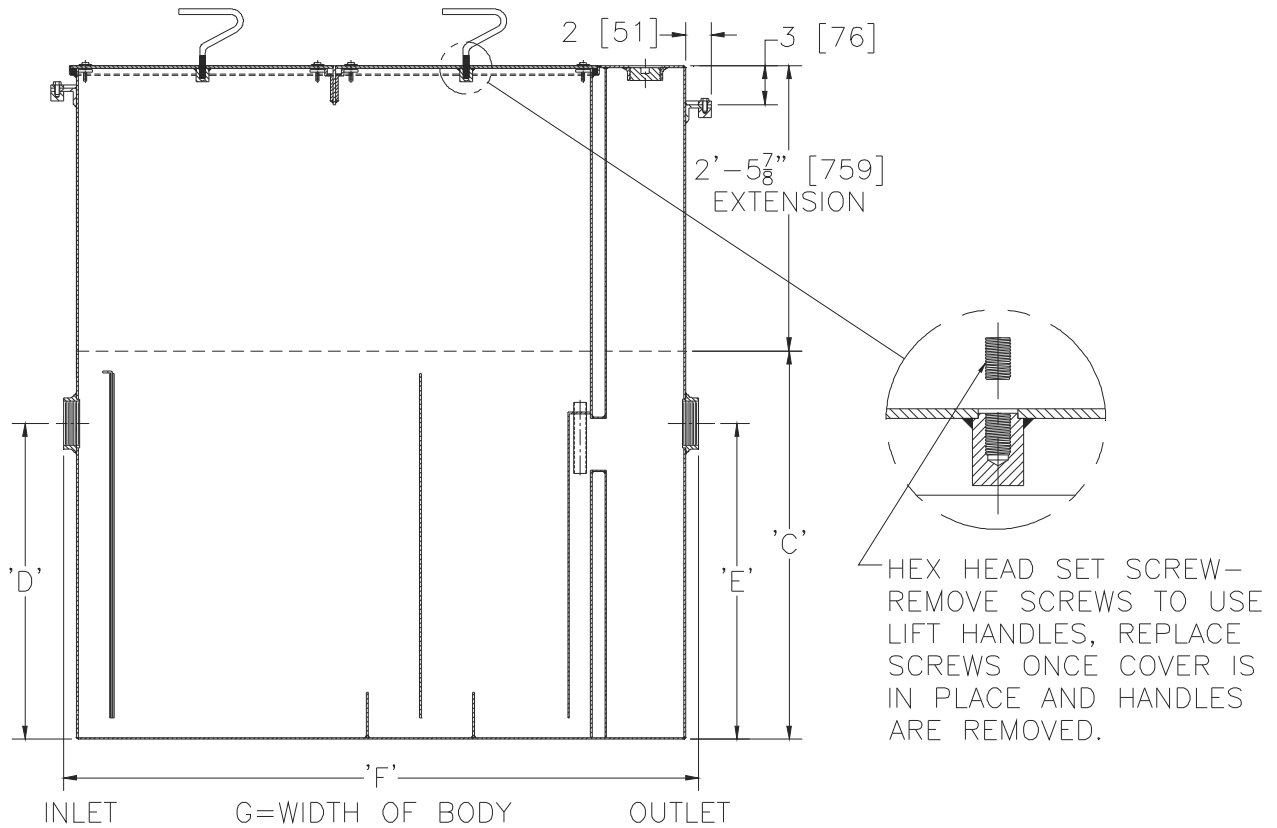
Z1172-180

SIZE 1600 LARGE CAPACITY GREASE INTERCEPTOR W/
EXTENSION & ANCHOR FLANGE W/ CLAMP COLLAR

SPECIFICATION SHEET

TAG _____

Dimensional Data (inches and [mm]) are Subject to Manufacturing Tolerances and Change Without Notice



**** Location of inlet must be maintained at the 'D' dimension listed for each size.**

| Size | Inlet/Outlet Size** | Flow Rate G.P.M. [L] | Capacity | | No. of Covers | Approx. Wt. Lbs. [kg] | Dimensions in Inches [mm] | | | |
|------|---------------------|----------------------|----------------|------------------|---------------|-----------------------|---------------------------|---------------|-----------|---------------|
| | | | Water Gal. [L] | Grease Lbs. [kg] | | | C # | D/E | F | G |
| 1600 | 6 [152] | 350 [1323] | 865 [3278] | 700 [318] | 2 | 2096 [951] | 50 1/2 [1283] | 43 7/8 [1114] | 87 [2210] | 63 5/8 [1616] |

ENGINEERING SPECIFICATION: ZURN Z1172-180

Large capacity Acid Resistant Coated interior and exterior fabricated steel grease interceptor, rated at 350 GPM [1323 L] and 700 Lbs. [318 kg] grease capacity, with internal air relief by-pass, bronze cleanout plug and visible double wall trap seal with removable pressure equalizing/flow diffusing baffle, clamping collar and sediment tray. Gasketed non-skid secured cover with removable lift handle, complete with flow control fitting. Regularly furnished with inlet and outlet in high position.

OPTIONS (Check/specify appropriate options)

PREFIXES

- _____ Z Acid Resistant Coated Fabricated Steel*
- _____ ZS All type 304 Fabricated Stainless Steel.

SUFFIXES

- _____ -AL Aluminum Cover
- _____ -HD Heavy duty traffic cover rated at 10,000 lbs. [4536 Kg.] maximum safe live load.
- _____ -L Angle type (Z1108-L) flow control device.

'C' Dim's shown are standard interceptor heights. Add extension height needed to obtain overall 'C' as specified.

* Regularly furnished unless otherwise specified.