



# Z1201-ND4-77

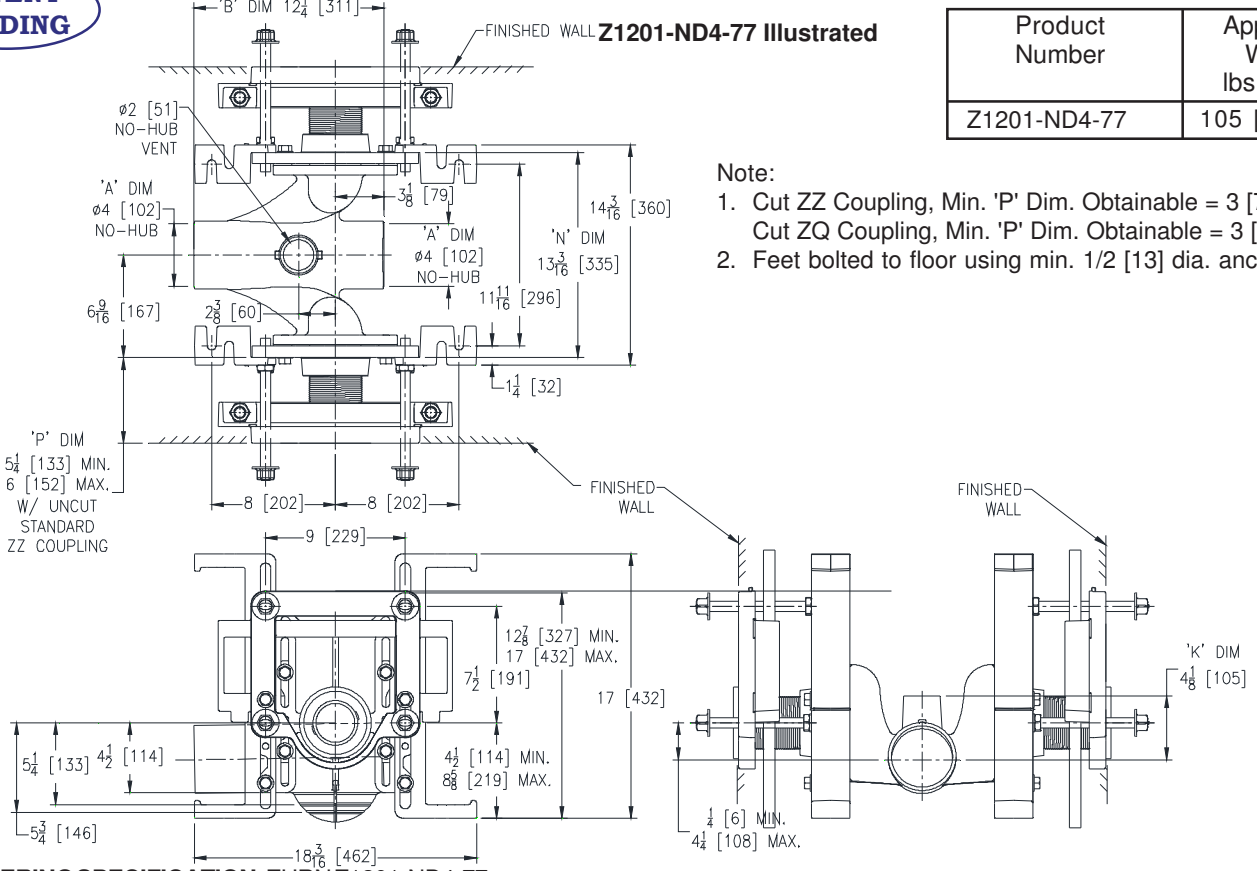
BACK-TO-BACK 17 [432] ONE PIECE RYK FOOT SUPPORT EZCARRY®  
 ADJUSTABLE HORIZONTAL HIGH PERFORMANCE SIPHONJET NO-HUB  
 WATER CLOSET CARRIER SYSTEM W/ RIGID SUPPORT FRAME

SPECIFICATION SHEET

TAG \_\_\_\_\_

**PATENT  
 PENDING**

Dimensional Data (inches and [mm]) are Subject to Manufacturing Tolerances and Change Without Notice



Product Number	Approx. Wt. lbs [kg]
Z1201-ND4-77	105 [48]

- Note:**
1. Cut ZZ Coupling, Min. 'P' Dim. Obtainable = 3 [76]  
 Cut ZQ Coupling, Min. 'P' Dim. Obtainable = 3 [76]
  2. Feet bolted to floor using min. 1/2 [13] dia. anchors.

**ENGINEERING SPECIFICATION: ZURN Z1201-ND4-77**

EZCarry® horizontal siphon jet water closet carrier system with high performance waterway and 4" [102 mm] no-hub connections. System includes Dura-Coated cast iron double main fitting with hydro-mechanically optimized sweep and extended 2" [51 mm] vent, adjustable gasketed faceplates, floor mounted 17" [432 mm] one piece RYK foot supports, rigid support frame assembly, fixture bolts, trim, stud protectors, bonded "Neo-Seal" gaskets, and corrosion resistant, adjustable 3" [76 mm] dia. X 6" [152 mm] couplings with integral test caps designed to increase flow velocity and line carry. EZCarry® system complies with the requirements of ASME A112.6.1M up to a 500 lb [227 kg] static load rating.

**OPTIONS** (Check/specify appropriate options)  
 Z1201-ND4-77 4 [102] No-Hub Back-to-Back Inlet (Double)

**PREFIXES**

- \_\_\_ Z D.C.C.I. System with Zurn ZZ Adjustable Coupling\*
- \_\_\_ ZQ D.C.C.I. System with NPT Faceplate, Non-Adjustable Coupling

**SUFFIXES**

- \_\_\_ -CC Corrosion Resistant Cast Iron Coupling (2-1/4 [57] to 12 [305])
- \_\_\_ -G Galvanized Cast Iron
- \_\_\_ -VP Vandal-Proof Trim
- \_\_\_ -50 Flush Valve Supply Support for Water Closets

\* Regularly furnished unless otherwise specified.