

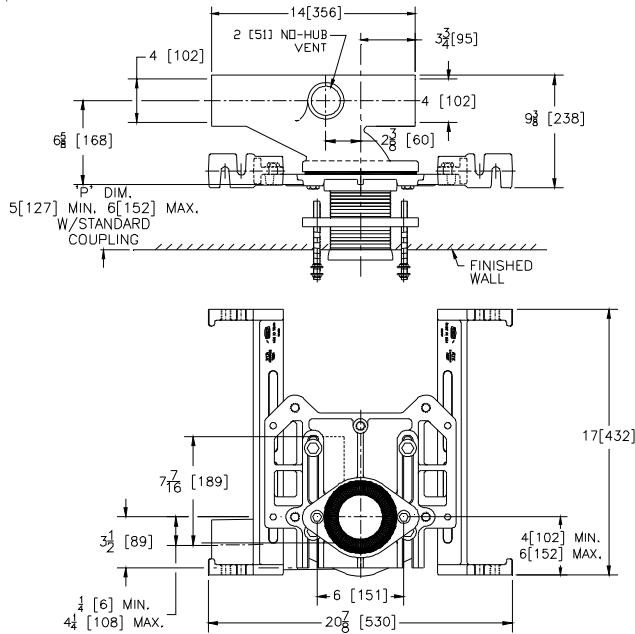


Z1203-126

SPECIFICATION SHEET

NARROW WALL ADJUSTABLE 4 [102] HORIZONTAL SIPHON JET NO-HUB W/
MODIFIED FACE PLATE FOR 4 [102] ROUGH, BACK OUTLET FIXTURE SUPPORT TAG _____

Dimensional Data (inches and [mm]) are Subject to Manufacturing Tolerances and Change Without Notice



Product Number	Approx. Wt. Lbs. [kg]
Z1203-NL4-126	65 [29]
Z1203-NR4-126	

Note:

1. Min. 'P' Dim. Obtainable = 2 [51]
2. Feet bolted to floor using min. 1/2 [13] dia. bolts and back slots on carrier feet.

ENGINEERING SPECIFICATION: ZURNZ1203-126

Narrow wall adjustable, horizontal siphon jet water closet "Rigid System" with 4 [102] No-Hub connections. Complete with Dura-Coated cast iron right hand or left hand main fitting, with 2 [51] vent, modified adjustable gasketed chase saver floor mount back outlet face plate, RYK - Unistrut Pre-Fab foot supports, corrosion resistant adjustable ABS coupling with integral test cap, fixture bolts, trim, and bonded "Neo-Seal" gasket, and floor mount back outlet fixture support.

OPTIONS (Check/specify appropriate options)

- _____ **Z1203-NR4-126** 4 [102] No-Hub Right Hand Inlet with Flow to Left
- _____ **Z1203-NL4-126** 4 [102] No-Hub Left Hand Inlet with Flow to Right

PREFIXES

- _____ **Z** D.C.C.I. System with Zurn "ZZ" Adjustable Coupling*
- _____ **ZQ** D.C.C.I. System with Non-Adjustable Coupling

SUFFIXES

- _____ **-BC** Back Cleanout
- _____ **-CC** Corrosion Resistant 6 [152] Long Cast Iron Coupling
- _____ **-CL** Coupling Length Greater Than Standard (Length Must be Specified)
- _____ **-G** Galvanized Cast Iron
- _____ **-T** Threaded Stack Connection
- _____ **-VP** Vandal Proof Trim
- _____ **-29** Mechanical Test Cap Assembly
- _____ **-61** Adjusting Wrench for "ZZ" Coupling

REV.	DATE: 10/08/12	C.N. NO. 124801
DWG. NO. 310581		PRODUCT NO. Z1203-126