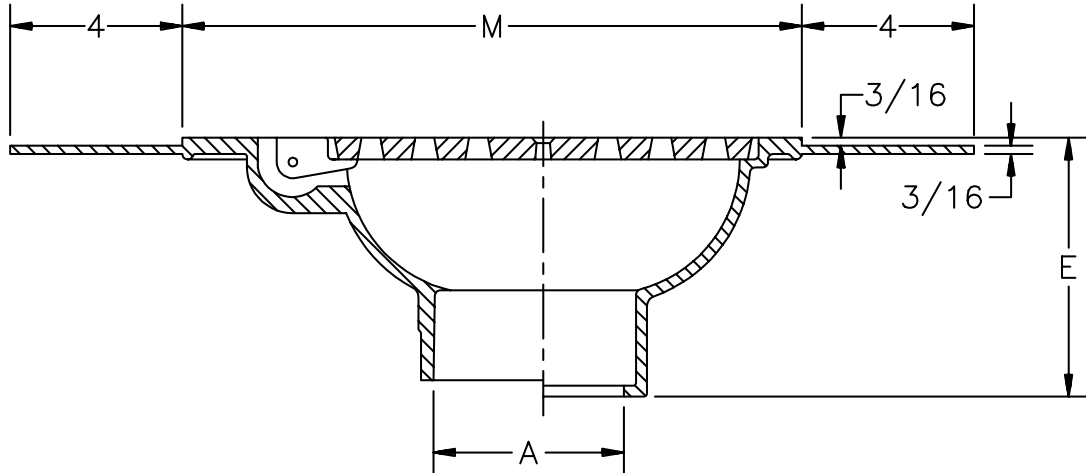




TAG _____

Z-560-78
9" OR 12" CELLAR DRAIN

Dimensional Data (inches and [mm]) are Subject to Manufacturing Tolerances and Change Without Notice



Dimensions In Inches		Approx. Wt. Lbs.	Grate Open Area Sq. In.
A- Pipe Size	M		
3	9	15	9
4	12	27	14

ENGINEERING SPECIFICATION: ZURN Z-560 9" or 12" Square top drain, Dura-Coated cast iron body with Dex-o-tex flange and bottom outlet and cast iron round hinged perforated light duty grate.

OPTIONS (Check/specify appropriate options)

OUTLET (Specify type)

- ___ **IC** Inside Caulk
- ___ **IG** Inside Caulk w/Sealtrol Gskt.
- ___ **IC** Inside Caulk
- ___ **IG** Inside Caulk w/Sealtrol Gskt.
- ___ **NL** Neo-Loc

PIPE SIZE (Specify size)

- ___ 3"
- ___ 4"
- ___ 3"
- ___ 4"
- ___ 3",4"

'E' BODY HT. DIMENSION

- 6-1/2"
- 5-3/4"
- 6-1/2"
- 6-1/2"
- 6"

PREFIXES

- ___ **Z** D.C.C.I. Body and Grate*

SUFFIXES

- ___ **-AR** Acid Resisting Epoxy Coated Finish
- ___ **-G** Galvanized Cast Iron
- ___ **-V** Backwater Valve (See Z-1099)
- ___ **-VP** Vandal Proof Secured Top

*REGULARLY FURNISHED UNLESS OTHERWISE SPECIFIED

REV.	DATE: 3/4/93	C.N. NO. 68933
DWG. NO. P-13802 PRODUCT NO. Z-560-78		