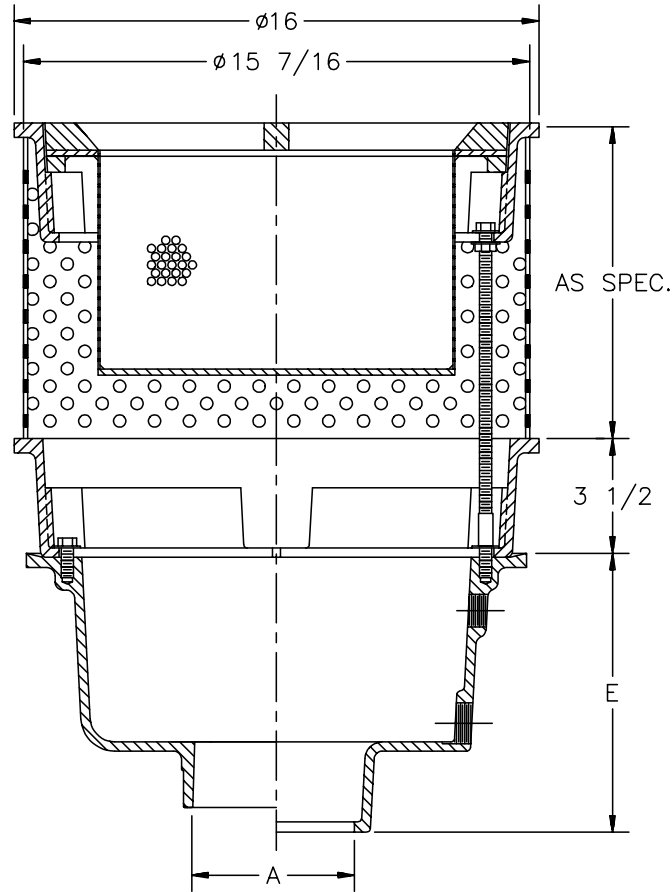




Z-543-80
16" DIAMETER HEAVY
DUTY DRAIN

TAG: _____

Dimensional Data (inches and [mm]) are Subject to Manufacturing Tolerances and Change Without Notice



A- Pipe Size In.	Approx. Wt. Lbs.	Grate Open Area Sq. In.
3-4-5-6	150	45

ENGINEERING SPECIFICATION: ZURN Z-543-80 16" Diameter top drain, Dura-Coated cast iron deep sump body with bottom outlet, seepage pan and combination membrane flashing clamp frame, perforated extension and secondary frame for heavy duty cast iron slotted grate with suspended sediment bucket.

OPTIONS (Check/specify appropriate options)

OUTLET (Specify type)

- _____ **IC** Inside Caulk
- _____ **IG** Inside Caulk w/Sealtrol Gskt.
- _____ **IP** Threaded
- _____ **NH** No-Hub
- _____ **NL** Neo-Loc

PIPE SIZE (Specify size)

- _____ 3" thru 6"
- _____ 3",4",6"
- _____ 3" thru 6"
- _____ 3" thru 6"
- _____ 3",4"

'E' BODY HT. DIMENSION

- 8-1/2"
- 8-1/2"
- 7"
- 8-1/2"
- 7-3/4"

PREFIXES

- _____ **Z-** D.C.C.I. Body and Grate*
- _____ **ZB-** D.C.C.I. Body with Polished Bronze Grate (Add 3/16" to 3-1/2" Dim.)
- _____ **ZN-** D.C.C.I. Body with Polished Nickel Bronze Grate (Add 3/16" to 3-1/2" Dim.)

SUFFIXES

- _____ **-DG** Duresist Grate
- _____ **-G** Galvanized Cast Iron
- _____ **-V** Backwater Valve (See Z-1099)
- _____ **-VP** Vandal Proof Secured Top
- _____ **-90** 90° Threaded Side Outlet (See Z-1042)

REV.	DATE: 10/19/93	C.N. NO. 69322
DWG. NO. P-13884 PRODUCT NO. Z-543-80		

*REGULARLY FURNISHED UNLESS OTHERWISE SPECIFIED