



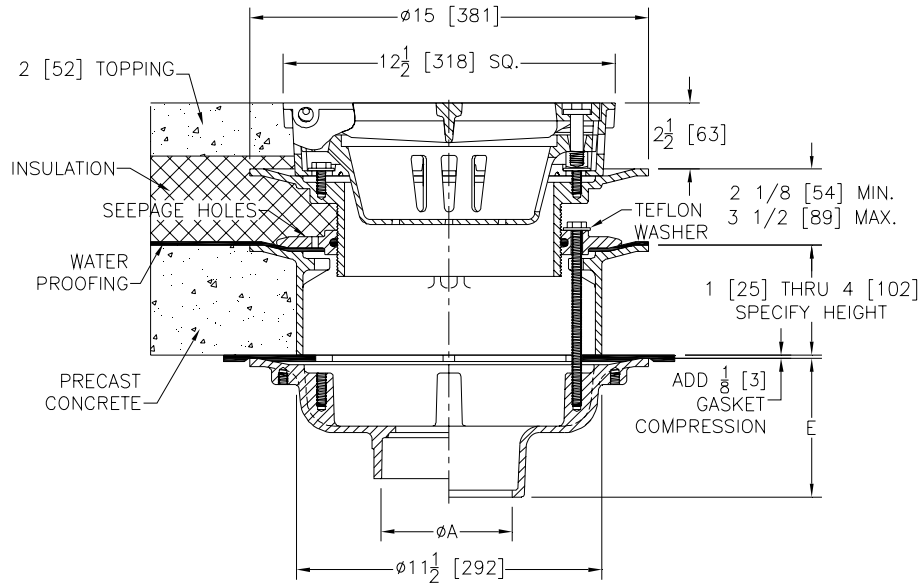
Z100-186

SPECIFICATION SHEET

15 [381] DIAMETER MAIN ROOF DRAIN W/ ADJUSTABLE EXTENSION, STATIC EXTENSION AND Z610-HL TOP

TAG _____

Dimensional Data (inches and [mm]) are Subject to Manufacturing Tolerances and Change Without Notice



A Pipe Size In.	Approx. Wt. Lbs. [kg]	Grate Open Area Sq. In. [cm ²]
2,3,4 [51,76,102]	52 [24]	40 [258]
5,6 [127,152]	56 [25]	
8 [203]	60 [27]	

ENGINEERING SPECIFICATION: ZURNZ100-186
 15 [381] Diameter roof drain. Dura-Coated cast iron body with compression gasket, static extension (precast in concrete), adjustable extension sleeve and clamping collar with seepage holes, square frame, suspended sediment bucket and heavy duty hinged locking grate.

OPTIONS (Check/specify appropriate options)

PIPE SIZE

- 2 thru 6,8 [51 thru 152,203]
- 2 thru 6,8 [51 thru 152,203]
- 2 thru 6,8 [51 thru 152,203]
- 2,3,4 [51,76,102]
- 6 [152]

(Specify size/type) **OUTLET**

- ___ IC Inside Caulk
- ___ IP Threaded
- ___ NH No-Hub
- ___ NL Neo-Loc
- ___ NL Neo-Loc

E BODY HT. DIM.

- 5 1/4 [133]
- 3 3/4 [95]
- 5 1/4 [133]
- 4 9/16 [116]
- 5 7/16 [112]

PREFIXES

- ___ Z D.C.C.I. Body and Top*
- ___ ZB D.C.C.I. Body and Polished Bronze Top (Add 3/16 [5] to 2 1/2 [64] dim. and 3/4 [19] to 12 1/2 [318].)
- ___ ZN D.C.C.I. Body and Polished Nickel Bronze Top (Add 3/16 [5] to 2 1/2 [64] dim. and 3/4 [19] to 12 1/2 [318].)

SUFFIXES

- ___ -AR Acid Resistant Epoxy Coated
- ___ -DG Duresist Grate
- ___ -DS Ductile Iron Solid Cover
- ___ -DX Dex-o-tex Flange (ZB, ZN Only)
- ___ -G Galvanized Cast Iron
- ___ -LY (Less) Sediment Bucket
- ___ -P Trap Primer Connection
- ___ -TS Top Secured with Slotted Screws
- ___ -V Backwater Valve
- ___ -VP Vandal-Proof Secured Top
- ___ -90 90° Threaded Side Outlet Body (2 thru 6 [51 or 152])

REV.	DATE: 5/27/08	C.N. NO. 98540
DWG. NO. P-15551	PRODUCT NO. Z100-186	

*REGULARLY FURNISHED UNLESS OTHERWISE SPECIFIED