

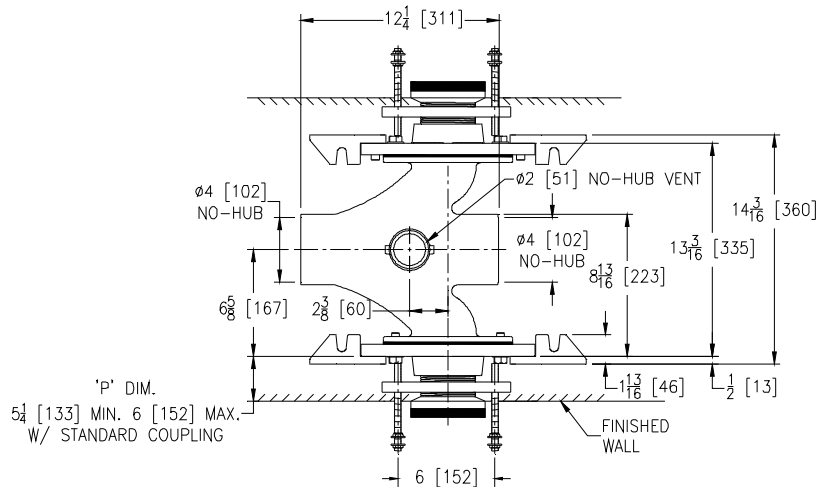
Z1201-ND4-F

EZCARRY® ADJUSTABLE HORIZONTAL HIGH PERFORMANCE BACK-TO-BACK SIPHON JET NO-HUB WATER CLOSET CARRIER SYSTEM W/ FLOOR MOUNTED, BACK OUTLET FIXTURE SUPPORT

SPECIFICATION SHEET

TAG

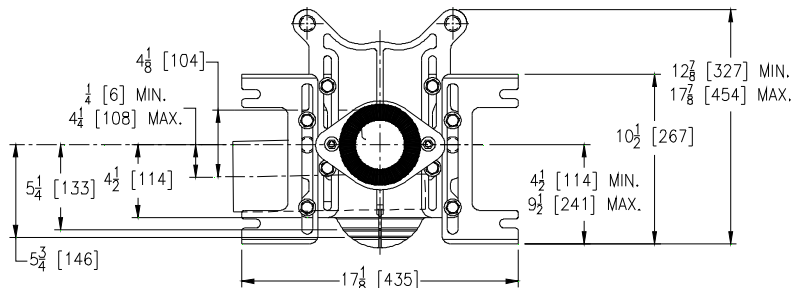
Dimensional Data (inches and [mm]) are Subject to Manufacturing Tolerances and Change Without Notice



Product Number	Approx. Wt. lbs [kg]
Z1201-ND4-F	88 [40]

Note:

1. Z Coupling, Min. 'P' Dim. Obtainable=2 [51]
ZQ Coupling, Min. 'P' Dim. Obtainable=5 [127]
2. Feet bolted to floor using min.
1/2 [13] dia. anchors.



ENGINEERING SPECIFICATION: ZURN Z1201-ND4-F

EZCarry® horizontal siphon jet water closet carrier system with high performance waterway and 4" [102mm] no-hub connections. System includes Dura-Coated cast iron double main fitting with hydro-mechanically optimized sweep and extended 2" [51mm] vent, adjustable gasketed faceplates, universal floor mounted pre-fab slotted foot supports, floor mounted back outlet fixture support, trim, stud protectors, bonded "Neo-Seal" gaskets, and corrosion resistant, adjustable 3" [76mm] dia. X 6" [152mm] couplings with integral test caps designed to increase flow velocity and line carry. EZCarry® system complies with the requirements of ASME A112.6.1M up to a 500 lbs [227 kg] static load rating.

OPTIONS (Check/specify appropriate options)

Z1201-ND4-F 4 [102] No-Hub Back-to-Back Inlet (Double)

PREFIXES

___ Z	D.C.C.I. System with Zurn ZZ Adjustable Coupling*
___ ZQ	D.C.C.I. System with NPT Faceplate, Non-Adjustable Coupling

SUFFIXES

____-A	Auxiliary Support Assembly (For 'P' Dim. Greater than 18 [457])	____-G	Galvanized Cast Iron
____-CC	Corrosion Resistant Cast Iron Coupling (2-1/4 [57] to 12 [305])	____-M	Auxiliary Foot Support (for 'P' Dim. 10 thru 18 [254 thru 457])
____-CE	EZ-Set™ Coupling (Available 6 [152] ,12 [305] or longer when specified. Minimum length=5 [127])	____-RYK	Unistrut Pre-Fab Foot Support
____-CL	Custom Length Standard Coupling with Integral Test Cap (Specify Length 4, 8, 10, 12 [102, 203, 254, 305])	____-RYK17	One Piece Unistrut Pre-Fab Foot
____-CS	2-1/4 [57] Polymer Coupling with Integral Test Cap	____-VP	Vandal-Proof Trim
		____-45	Finishing Frame for Siphon Jet System
		____-50	Flush Valve Supply Support for Water Closets

* Regularly furnished unless otherwise specified.

Zurn Industries, LLC | Specification Drainage Operation
1801 Pittsburgh Avenue, Erie, PA U.S.A. 16502 · Ph. 855-663-9876, Fax 814-454-7929
In Canada | **Zurn Industries Limited**
3544 Nashua Drive, Mississauga, Ontario L4V 1L2 · Ph. 905-405-8272, Fax 905-405-1292
www.zurn.com

Rev. B
Date: 11/17/16
C.N. No. 135539
Prod. | Dwg. No. Z1201-ND4-F