



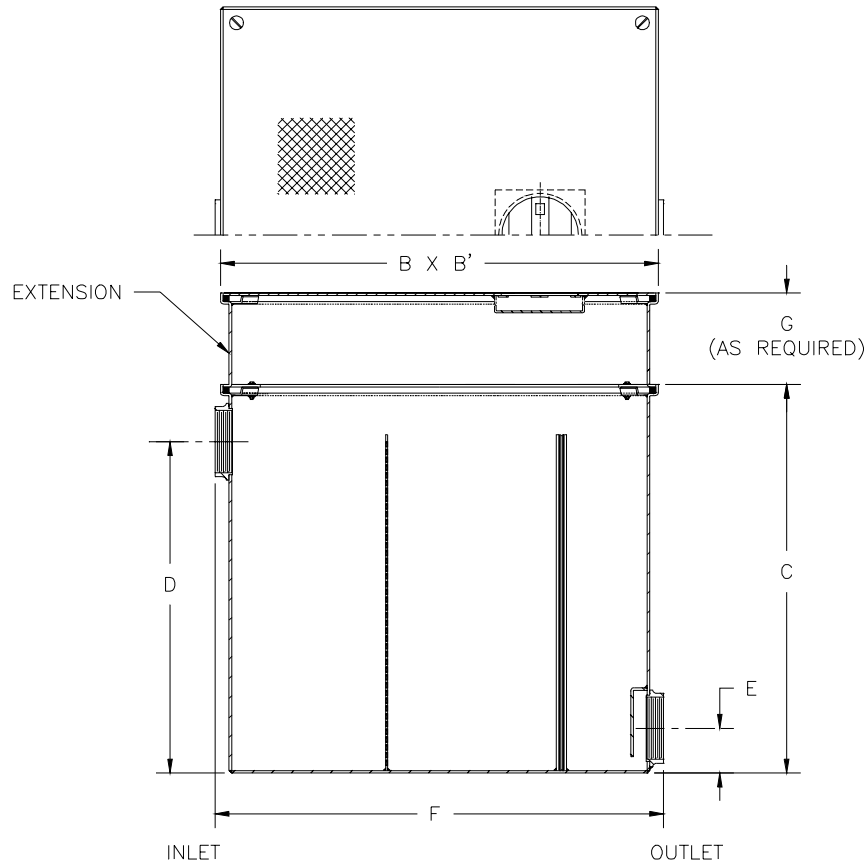
Z-1185-E

LINT INTERCEPTOR WITH EXTENSION

SPECIFICATION SHEET

TAG _____

Dimensional Data (inches and [mm]) are Subject to Manufacturing Tolerances and Change Without Notice



Size No. of Machines	Inlet/Outlet Size**	Flow Rate G.P.M. [L]	Approx. Wt. Lbs. [kg]	Dimensions In Inches					
				B	B'	C	D	E	F
3	2 [50]	30 [113]	93 [42]	17 [432]	17 [432]	16 1/2 [419]	13 1/2 [343]	3 1/4 [82]	17 1/4 [438]
7	3 [75]	70 [265]	155 [70]	25 [635]	25 [635]	20 [508]	17 [432]	3 1/4 [82]	25 1/2 [648]
10	4 [100]	100 [378]	271 [123]	33 [838]	33 [838]	28 [711]	25 [635]	4 [102]	34 [864]
20	4 [100]	200 [756]	404 [183]	40 [1016]	40 [1016]	35 [889]	32 [813]	4 [102]	41 [1041]
30	6 [150]	300 [1134]	654 [297]	45 [1143]	45 [1143]	40 [1016]	36 [914]	5 [127]	46 [1168]
40	6 [150]	400 [1512]	723 [328]	48 [1219]	48 [1219]	43 [1092]	39 [991]	5 [127]	49 [1245]
50	6 [150]	500 [1890]	911 [414]	52 [1321]	52 [1321]	47 [1194]	43 [1092]	5 [127]	53 [1346]

ENGINEERING SPECIFICATION: ZURN Z-1185-E Acid Resistant Coated interior and exterior fabricated steel lint interceptor with non-skid secured cover, stainless lint intercepting secondary screen assembly and permanent primary straining baffle, and acid resistant coated interior and exterior fabricated steel extension section (specify overall height required). Regularly furnished with high inlet and low outlet. Note: 'G' dimension over 20 [508] requires an integral extension.

OPTIONS (Check/specify appropriate options)

PREFIXES

_____ Z- Acid Resistant Coated Fabricated Steel*

SUFFIXES

_____ RS- Stainless Steel Screen Replacement Assembly

*REGULARLY FURNISHED UNLESS OTHERWISE SPECIFIED

REV.	DATE: 11/19/01	C.N. NO. 88182
DWG. NO. 66427	PRODUCT NO. Z-1185-E	

ZURN INDUSTRIES, INC. ♦ SPECIFICATION DRAINAGE OPERATION ♦ 1801 Pittsburgh Ave. ♦ Erie, PA 16514

Phone: 814/455-0921 ♦ Fax: 814/454-7929 ♦ World Wide Web: www.zurn.com

In Canada: ZURN INDUSTRIES LIMITED ♦ 3544 Nashua Drive ♦ Mississauga, Ontario L4V1L2 ♦ Phone: 905/405-8272 Fax: 905/405-1292