



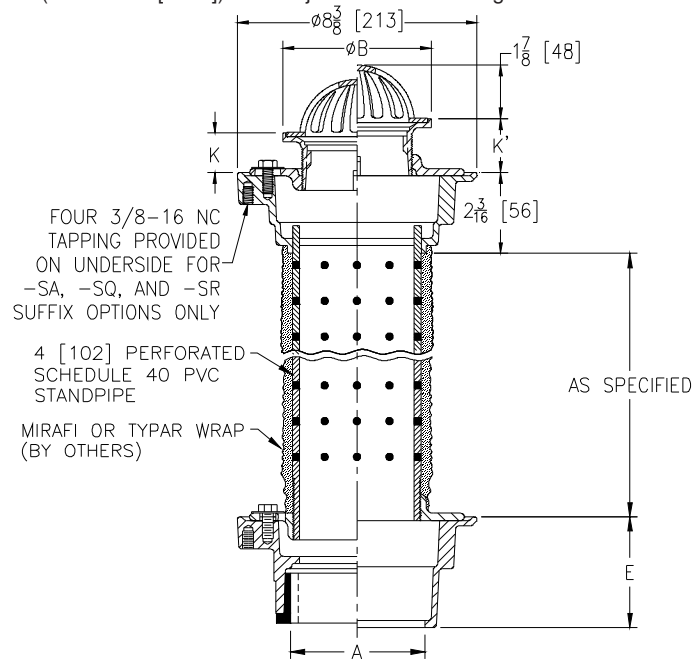
# Z415G-82

## Z415 "TYPE G" TOP ASSEMBLY WITH PERFORATED STANDPIPE & Z415 LOWER BODY

SPECIFICATION SHEET

TAG \_\_\_\_\_

Dimensional Data (inches and [ mm ]) are Subject to Manufacturing Tolerances and Change Without Notice



Dimensions in Inches [mm]						Approx. Wt. Lbs. [kg]	Strainer Open Area Sq. In. [cm <sup>2</sup> ]
A Pipe Size	B Strainer Dia.	K		K'			
		Min.	Max.	Min.	Max.		
2,3,4 [51,76,102]	5 [127]	1 [25]	1-1/2 [38]	1-3/32 [28]	2-1/4 [57]	30 [14]	10 [65]
6 [152]	6 [152]	1 [25]	1-25/32 [45]	1-13/32 [36]	2-17/32 [64]	35 [16]	12 [77]

### ENGINEERING SPECIFICATION: ZURN Z415G-82

Floor and shower drain, Dura-Coated cast iron body with bottom outlet, combination invertible membrane clamp and adjustable collar with seepage slots and "TYPE G" polished nickel bronze strainer with dome grate. Lower Z415 body is Dura-Coated cast iron with combination invertible membrane clamp.

### OPTIONS (Check/specify appropriate options)

#### PIPE SIZE

2,3,4 [51,76,102]  
 2 [51]  
 3 [76]  
 4 [102]  
 2,3,4 [51,76,102]  
 2,3,4 [51,76,102]

#### (Specify size/type) OUTLET

\_\_\_ IC Inside Caulk  
 \_\_\_ IP Threaded  
 \_\_\_ IP Threaded  
 \_\_\_ IP Threaded  
 \_\_\_ NH No-Hub  
 \_\_\_ NL Neo-Loc

#### 'E' BODY HT. DIM.

4-13/16 [122]  
 2-7/16 [62]  
 2-3/4 [70]  
 2-13/16 [71]  
 3-13/16 [97]  
 3-7/8 [98]

### SUFFIXES

- \_\_\_ -AR Acid Resisting Epoxy Coated Cast Iron
- \_\_\_ -BS Bronze Mesh Screen Over Dome
- \_\_\_ -CP Chrome-Plated Bronze Top
- \_\_\_ -G Galvanized Cast Iron
- \_\_\_ -P Trap Primer Connection (Specify 1/2 [13] or 3/4 [19]) (Lower)
- \_\_\_ -SA Stabilizer Assembly (See Z1035) (Lower)
- \_\_\_ -SQ Stabilizer Q-Deck (See Z1035-Q) (Lower)
- \_\_\_ -SR Stabilizer Ring (Lower)
- \_\_\_ -SS Stainless Steel Mesh Screen Over Dome
- \_\_\_ -TC Neo-Loc Test Cap Gasket (2 - 4 [51 - 102] NL Bottom Outlet Only) (Lower)
- \_\_\_ -U 1 thru 3 [25 thru 76] High Extension Adapter
- \_\_\_ -VP Vandal-Proof Secured Top
- \_\_\_ -Y Sediment Bucket
- \_\_\_ -18 Leveling Ring (See Z400-18)
- \_\_\_ -90 90° Threaded Side Outlet Body Assembly (2 [51], 3 [76] Only) (Lower)

\* Regularly furnished unless otherwise specified.