



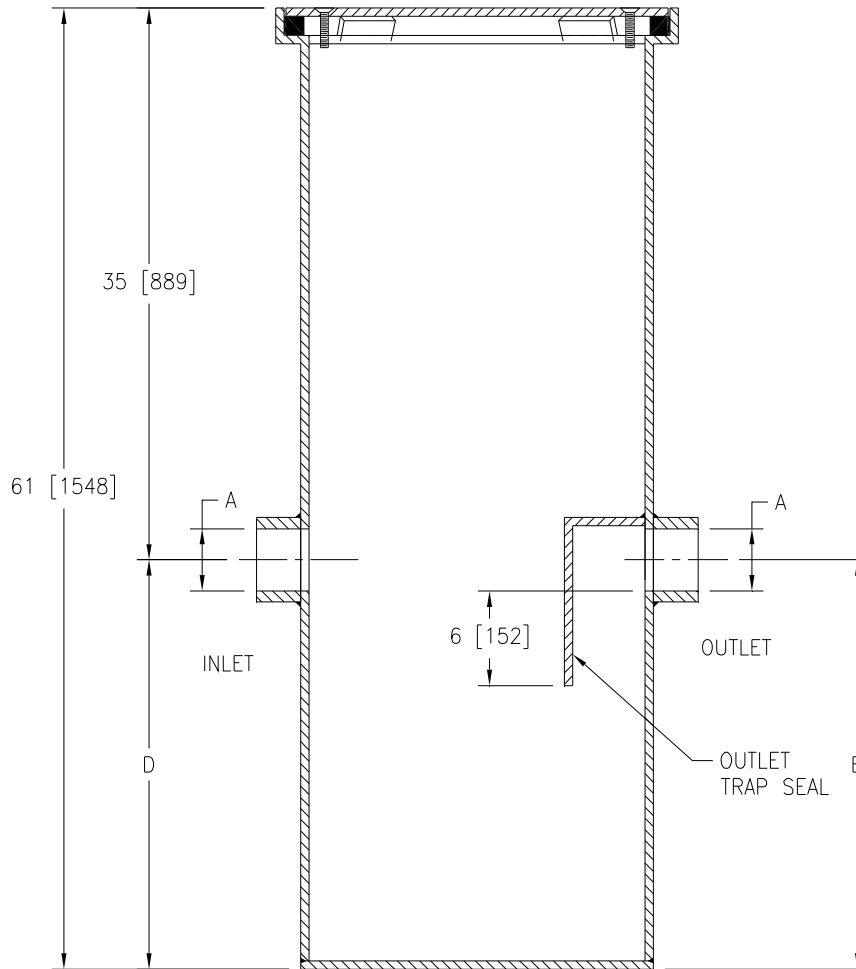
# Z1187-SI-91

## SAND INTERCEPTOR W/ 35 [889] INTEGRAL EXTENSION, VANDAL-PROOF SOLID COVER, AND NO-HUB CONNECTIONS

SPECIFICATION SHEET

TAG \_\_\_\_\_

Dimensional Data (inches and [ mm ]) are Subject to Manufacturing Tolerances and Change Without Notice



Size	Flow G.P.M. [L] (Max.)	A Pipe Size	Length	D/E	Capacity Gal. [L] (Static)	No. of 12 x 24 [305 x 610] Grates	Width
20	20 [76]	4 [102]	24 [610]	26 [660]	60 [227]	2	24 [610]

**ENGINEERING SPECIFICATION: ZURN Z1187-SI-91**

Acid Resistant Coated interior and exterior fabricated steel sand interceptor with No-Hub inlet and outlet, complete with removable Heavy-Duty gasketed traffic cover rated at 10,000 lb [4536 kg] maximum safe live load, secured with vandal proof screws, and integral extension.

**OPTIONS** (Check/specify appropriate options)

**PREFIXES**

\_\_\_ Z Acid Resistant Coated Fabricated Steel\*

**SUFFIXES**

\_\_\_ -DG Duresist Grate

REV.	DATE: 04/02/09	C.N. NO. 99869
DWG. NO. P-15688 PRODUCT NO. Z1187-SI-91		

\*REGULARLY FURNISHED UNLESS OTHERWISE SPECIFIED