



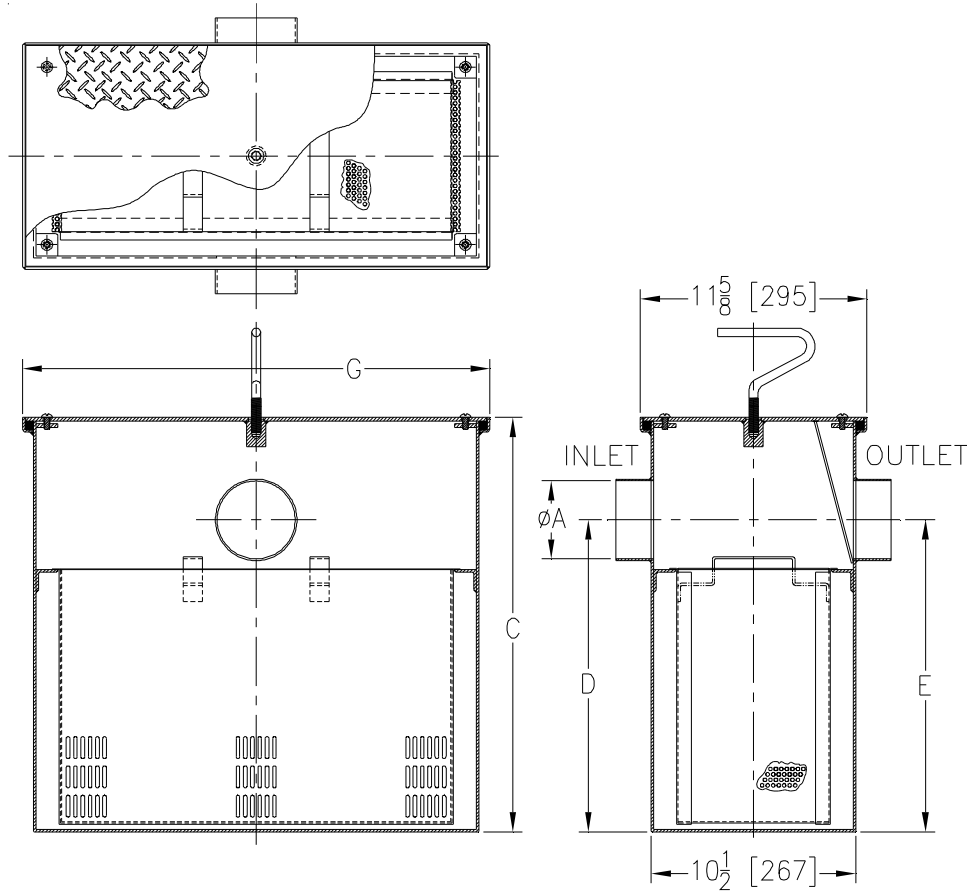
Z1183-FC-91

100 G.P.M. SOLIDS INTERCEPTOR WITH FLUSH COVER AND 4 [102] INLET/OUTLET

SPECIFICATION SHEET

TAG _____

Dimensional Data (inches and [mm]) are Subject to Manufacturing Tolerances and Change Without Notice



| Size | 'A' Inlet/Outlet Size | Flow Rate G.P.M. [L] | Solids Cap. Cubic Ft. [m³] | Dimensions in Inches [mm] | | |
|------|-----------------------|----------------------|----------------------------|---------------------------|--------------|----------|
| | | | | C | G | D/E |
| 1000 | 4 [102] | 100 [455] | 1.8 [.051] | 27 [686] | 24-3/8 [619] | 23 [584] |

ENGINEERING SPECIFICATION:

ZURNZ1183-FC-91
 Large capacity acid resistant coated interior and exterior fabricated steel, or stainless steel solids interceptor, for recessed installation with screen attached to gasketed, non-skid secured cover with removable lift handle, and removable sediment basket. Size to be used with corresponding Z1160, Z1170, Z1172 or Z1173 Grease Interceptors.

OPTIONS (Check/specify appropriate option)

PREFIXES

- ___ Z Acid Resistant Coated Fabricated Steel*
- ___ ZS Type 304 Fabricated Stainless Steel

SUFFIXES

- ___ -CS Custom Screens (Specify material and perforation size required)
- ___ -E Acid Resistant Coated Interior and Exterior Fabricated Steel Extension Section.
- ___ -YR Replacement Stainless Steel Bucket Assembly

* Regularly furnished unless otherwise specified.