



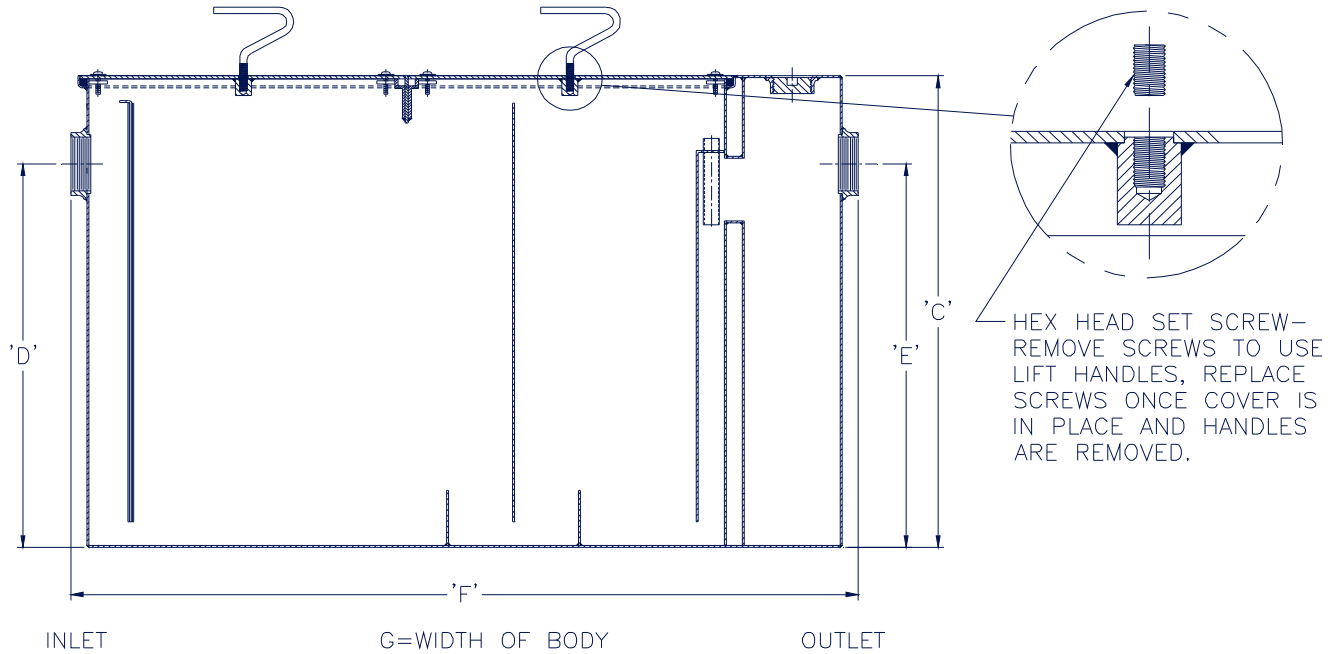
Z1172-182

LARGE CAPACITY GREASE INTERCEPTOR W/ 6 [152] INLET & OUTLET

SPECIFICATION SHEET

TAG _____

Dimensional Data (inches and [mm]) are Subject to Manufacturing Tolerances and Change Without Notice



Size	Inlet/Outlet Size	Flow Rate G.P.M. [L.P.M.]	Capacity		No. of Covers	Approx. Wt. Lbs. [kg]	Dimensions in Inches [mm]			
			Water Gal.[L]	Grease Lbs.[kg]			C	D/E	F	G
1400	6[150]	250[946]	465[1760]	500[227]	2	1384[628]	41[1041]	36[914]	71[1803]	51-5/8[1311]

ENGINEERING SPECIFICATION: ZURN Z1172-182

Large capacity Acid Resistant Coated interior and exterior fabricated steel grease interceptor, rated at 250 GPM and 500 Lbs. grease capacity, with internal air relief by-pass, bronze cleanout plug and visible double wall trap seal with removable pressure equalizing/ flow diffusing stainless steel baffle. Complete with gasketed non-skid secured cover with removable lift handles, and flow control fitting.

OPTIONS (Check/specify appropriate options)

PREFIXES

- ___ Z Acid Resistant Coated Fabricated Steel*
- ___ ZS All Type 304 Fabricated Stainless Steel

SUFFIXES

- ___ -AL Aluminum Cover
- ___ -E Acid Resistant Coated Interior and exterior fabricated steel extension section. (Specify 'C' Dim. required) for recessed installation.
- ___ -HD Heavy-duty traffic cover rated at 10,000 lbs. [4536 kg] maximum safe live load.
- ___ -K Anchor flange 1 3/4 [44] down from top and 2 [51] wide.
- ___ -KC Anchor flange 1 3/4 [44] down from top and 2 [51] wide with clamp collar.
- ___ -L Angle type (Z1108-L) flow control device.

* Regularly furnished unless otherwise specified.