



Z1186-ST-99

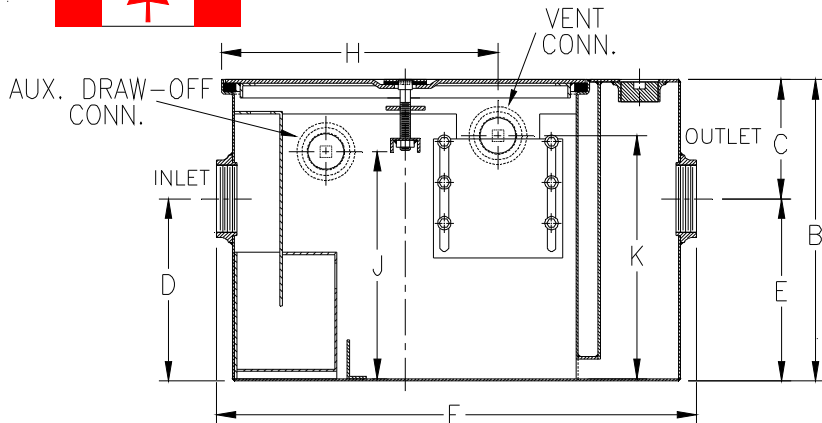
OIL INTERCEPTOR W/ INTEGRAL STORAGE TANK AND AUXILIARY DRAW-OFF CONNECTION

SPECIFICATION SHEET

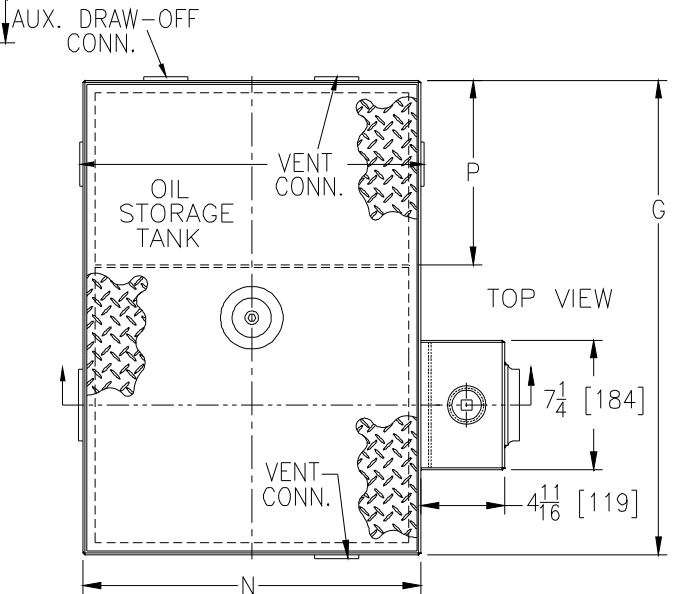
TAG _____



Dimensional Data (inches and [mm]) are Subject to Manufacturing Tolerances and Change Without Notice



**Note: 'B' dimension - Overall Height
See Suffix -E for Extension.**



Size	Inlet/Outlet Size**	Flow Rate G.P.M./ L.P.M.	Water Capacity Gal. [L]	Approx. Wt. Lbs. [Kg.]	Oil Storage Tank Cap. Gal. [L]	No. of Covers
600	3 [76]	25 [95]	16 [61]	280 [61]	55 [208]	2

Dimension in Inches (mm)										
Size	B	C	D/E	F	G	H	J	K	N	P
600	18-1/4 [464]	6-1/2 [165]	11-3/4 [298]	35-7/32 [895]	50-7/8 [1292]	19-1/4 [489]	12-1/2 [318]	15-1/4 [387]	29 [737]	34-3/16 [868]

ENGINEERING SPECIFICATION: ZURN Z1186-ST-99

Dura Coated interior and exterior fabricated steel oil interceptor, with bronze cleanout plug and visible double wall trap seal, removable combination pressure equalizing/flow diffusing baffle and sediment bucket, oil drawoff, vent connections, secured gasketed non-skid cover, left hand integral storage tank, and auxiliary draw-off connection. Regularly furnished with inlet and outlet in high position.

Note: location of outlet from bottom of interceptor cannot be changed.

OPTIONS (Check/specify appropriate options)

PREFIXES

- ___ Z Dura Coated Fabricated Steel*
- ___ ZS All Type 304 Fabricated Stainless Steel w/ Aluminum Cover
- ___ ZSS All Type 304 Fabricated Stainless Steel w/ Stainless Steel Cover

NOTE:

Location of outlet from bottom of Interceptor cannot be changed. Regularly furnished with left-hand side storage tank

SUFFIXES

- ___ -AR Acid Resistant Epoxy Coated Finish
- ___ -E Dura Coated interior and exterior fabricated steel section. (Specify 'B' Dim. required) for recessed installation
- ___ -HD Heavy duty traffic cover rated at 10,000 lbs. [4536 kg.] maximum safe live load.
- ___ -K Anchor flange 1-3/4 [44] down from top and 2 [51] wide. A 3 [76] minimum extension height is required when anchor flange (-K) option is specified. (Specify 'B' Dim. height required.)
- ___ -KC Anchor flange 1-3/4 [44] down from top and 2 [51] wide with clamp collar.
- ___ -STR Storage tank on right hand side when facing the inlet.

REV.	DATE: 1/24/12	C.N. NO. 122720	
DWG. NO. 308781	PRODUCT NO. Z1186-ST-99		

*REGULARLY FURNISHED UNLESS OTHERWISE SPECIFIED