



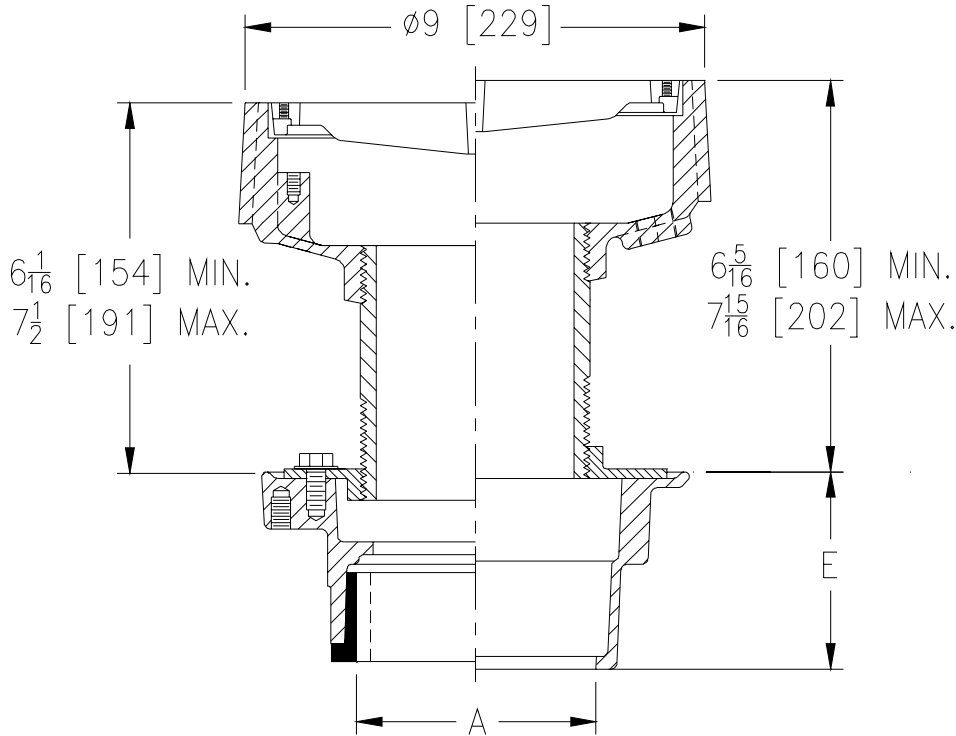
Z551-92

9 [229] DIAMETER FLOOR DRAIN W/ Z415 LOWER BODY

SPECIFICATION SHEET

TAG _____

Dimensional Data (inches and [mm]) are Subject to Manufacturing Tolerances and Change Without Notice



A- Pipe Size In.	Approx. Wt. Lbs. [kg]	Grate Open Area Sq. In. [cm ²]
2-3-4 [51-76-102]	35 [16]	18 [116]

ENGINEERING SPECIFICATION: ZURN Z551-92
9 [229] diameter floor drain, Dura-Coated cast iron upper and lower bodies, reversible clamp collar, pipe nipple and slotted grate.

OPTIONS (Check/specify appropriate options)

PIPE SIZE	(Specify size/type) OUTLET	'E' BODY HT. DIM.
2 thru 4 [51 thru 102]	___ IC Inside Caulk	3 7/8 [98]
2 thru 4 [51 thru 102]	___ IG Inside Caulk w/Sealtrol Gskt.	3 7/8 [98]
2 thru 4 [51 thru 102]	___ IP Threaded	2 5/8 [67]
2 thru 4 [51 thru 102]	___ NH No-Hub	3 7/8 [98]
2 thru 4 [51 thru 102]	___ NL Neo-Loc	3 3/4 [95]

PREFIXES

___ Z D.C.C.I. Body and Grate*

SUFFIXES

- ___ -G Galvanized Cast Iron
- ___ -P Trap Primer Connection (Specify 1/2 [13] or 3/4 [19]) (Lower Body Only)
- ___ -SC Solid Cover
- ___ -SG Solid Gasketed Cover
- ___ -TS Top Secured with Slotted Screws
- ___ -VP Vandal-Proof Secured Top
- ___ -Y Sediment Bucket (Upper Body)

REV. A	DATE: 7/15/04	C.N. NO. 92316
DWG. NO. P-14473		PRODUCT NO. Z551-92

*REGULARLY FURNISHED UNLESS OTHERWISE SPECIFIED