



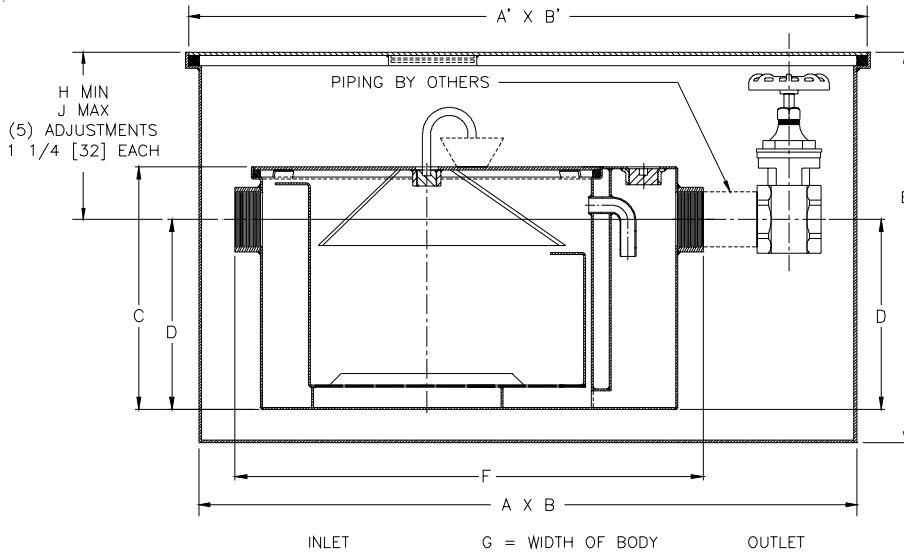
Z1173-TD-RE

GREASE INTERCEPTOR WITH GREASE ACCUMULATING CONE, INLINE SHUTOFF VALVE, AND RECESSING RECEIVER

SPECIFICATION SHEET

TAG _____

Dimensional Data (inches and [mm]) are Subject to Manufacturing Tolerances and Change Without Notice



Size	Inlet/ Outlet Size**	Flow Rate G.P.M. [L]	Capacity		Approx. Wt. Lbs. [kg]
			Water Gal. [L]	Grease Lbs. [kg]	
200	2[51]	7 [26]	5 [19]	14 [6]	138 [63]
300	2[51]	10 [38]	6 [23]	20 [9]	163 [74]
400	3[76]	15 [57]	10 [38]	30 [14]	190 [86]
500	3[76]	20 [76]	16 [61]	40 [18]	215 [98]

Size	Inlet/ Outlet Size**	Flow Rate G.P.M. [L]	Capacity		Approx. Wt. Lbs. [kg]
			Water Gal. [L]	Grease Lbs. [kg]	
600	3[76]	25 [95]	21 [79]	50 [23]	251 [114]
700	3[76]	35 [132]	30 [114]	70 [32]	290 [132]
800	3[76]	50 [189]	40 [151]	100 [45]	330 [150]
900	3[76]	75 [284]	65 [246]	150 [68]	372 [169]

Dimensions in Inches [mm]											
Size	A	A'	B	B'	C	D	E	F	G	H	J
200	36 3/4 [933]	38 3/4 [984]	15 3/8 [391]	17 3/8 [441]	11 1/4 [286]	8 1/8 [206]	20 1/4 [514]	21 3/4 [552]	11 7/8 [302]	5 1/8 [130]	11 3/8 [289]
300	40 1/8 [1019]	42 1/8 [1070]	17 1/2 [445]	19 1/2 [495]	11 3/4 [298]	8 1/4 [210]	20 3/4 [527]	25 1/8 [638]	14 [356]	5 1/2 [140]	11 3/4 [298]
400	42 1/8 [1070]	44 1/8 [1121]	20 [508]	22 [559]	13 3/8 [340]	9 3/8 [238]	22 3/8 [568]	27 1/8 [689]	16 3/4 [425]	6 [152]	12 1/4 [311]
500	45 [1143]	47 [1194]	20 3/4 [527]	22 3/4 [578]	15 [381]	11 3/4 [298]	24 [610]	30 [762]	17 1/4 [438]	5 1/4 [133]	11 1/2 [292]
600	47 1/4 [1200]	49 1/4 [1251]	23 1/4 [591]	25 1/4 [641]	17 [432]	12 1/2 [318]	25 3/4 [654]	32 1/4 [819]	19 7/8 [505]	6 1/2 [165]	12 3/4 [324]
700	49 1/8 [1248]	51 1/8 [1299]	26 [660]	28 [711]	18 3/4 [476]	14 1/4 [362]	27 3/4 [705]	34 1/8 [867]	22 1/2 [572]	6 1/2 [165]	12 3/4 [324]
800	51 [1295]	53 [1346]	28 [711]	30 [762]	21 1/2 [546]	16 [406]	30 1/2 [775]	36 [914]	24 1/2 [622]	7 1/2 [191]	13 3/4 [349]
900	51 [1295]	53 [1346]	32 [813]	34 [864]	22 3/4 [578]	18 1/2 [470]	31 3/4 [806]	36 [914]	28 5/8 [727]	6 1/4 [159]	12 1/2 [318]

ENGINEERING SPECIFICATION: ZURN Z1173-TD-RE Acid Resistant Coated interior and exterior fabricated steel grease interceptor, rated at _____ GPM and _____ Lbs. grease capacity, with internal air relief by-pass, bronze cleanout plug and visible double wall trap seal with removable combination pressure equalizing/flow diffusing baffle and sediment tray. Gasketed non-skid secured cover with draw off port having bronze plug, grease accumulating cone, NPT to hose adaptor, 2' [610] flexible hose, hose clamp, and an in line closure valve. Complete with Acid Resistant Coated interior and exterior fabricated steel recessing receiver, enclosed type, with adjustable support brackets and gasketed non-skid cover with covered recessed lift handle and Z-1108 Flow Control Fitting. Regularly furnished inlet and outlet in high position. Note: Location of outlet from bottom of interceptor cannot be changed.

PREFIXES

_____ Z Acid Resistant Coated Fabricated Steel*

SUFFIXES

- _____ -L Angle type (Z-1108-L) flow control device with plunger (no additional charge).
- _____ -R Acid Resistant Coated interior and exterior fabricated steel recessing receiver for recessed installation. Furnished with adjustable support brackets and gasketed non-skid cover with covered recessed lift handle.

** Inlet and outlet sizes shown indicate standard operating sizes and flow control settings. Size #300 will have 3[75] connections reduced to 2[50] and sizes #600 thru #900 will have 4[100] connections reduced to 3[75] as standard. If changed, flow control must be adjusted accordingly.

REV.	DATE: 8/5/03	C.N. NO. 91154
DWG. NO. 67366	PRODUCT NO. Z1173-TD-RE	

*REGULARLY FURNISHED UNLESS OTHERWISE SPECIFIED