



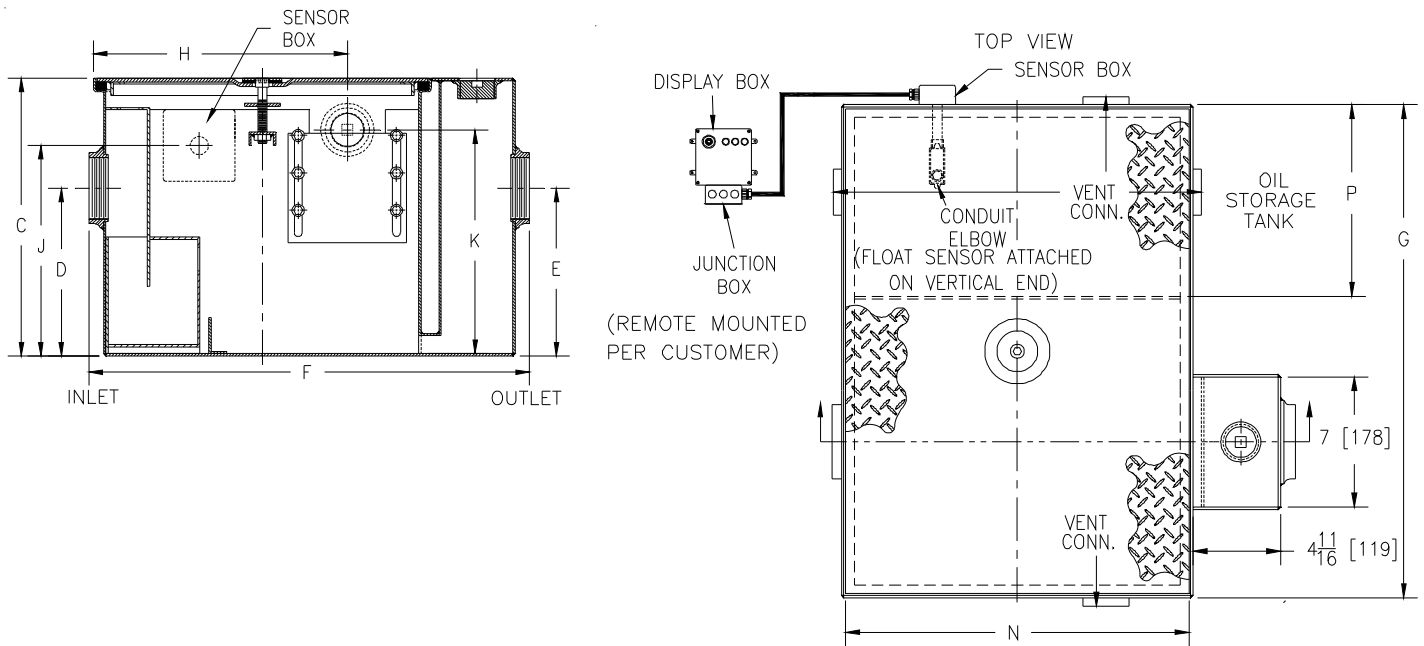
# Z1186-ST-108

SIZE 800 OIL INTERCEPTOR W/ INTEGRAL STORAGE TANK, OIL LEVEL SENSOR, & 4 [102] INLET/OUTLET

SPECIFICATION SHEET

TAG \_\_\_\_\_

Dimensional Data (inches and [ mm ]) are Subject to Manufacturing Tolerances and Change Without Notice



SIZE	Inlet/Outlet Size**	Flow Rate G.P.M.	Water Capacity Gal.[L]	Approx. Wt. Lbs.[kg]	P
800	4 [102]	50 [189]	30 [114]	529 [240]	48-1/4 [1226]

Dimensions in inches [mm]									Oil Storage Tank Capacity Gal.[L]	No. of Covers
SIZE	C	D/E	F	G	H	J	K	N		
800	24-1/4 [616]	14-3/16 [360]	49-7/16 [1256]	70-1/8 [1781]	26-1/4 [667]	20-1/2 [521]	21-1/4 [540]	43 [1092]	125 [473]	3

### ENGINEERING SPECIFICATION: ZURN Z1186-ST-108

Size 800 Acid Resistant Coated interior and exterior fabricated steel oil interceptor, with bronze cleanout plug and visible double wall trap seal, removable combination pressure equalizing/flow diffusing baffle and sediment bucket, oil drawoff, vent connections, secured gasketed non-skid cover, flow control fitting, and left hand integral storage tank. With a fiberglass sensor box containing a float oil level sensor, a fiberglass display box with one green power light, one red oil level light, audible alarm and junction box. Regularly furnished with 4" [102mm] inlet and outlet in high position. Note: location of outlet from bottom of interceptor cannot be changed.

### OPTIONS (Check/specify appropriate options)

#### PREFIXES

\_\_\_\_\_ Z Acid Resistant Coated Fabricated Steel\*

#### SUFFIXES

\_\_\_\_\_ -STR Storage tank on right hand side when facing the inlet.  
 \_\_\_\_\_ -HD Heavy duty traffic cover rated at 10,000 lbs. maximum safe live load

#### Note:

1. Power supply 120V GFCI.
2. Recommended Installations: Sitting on the floor or recessed in a pit only. (A pit installation requires that a drain or sump pump be installed to keep the pit relatively dry).
3. For pit installation see Form #IT66.