

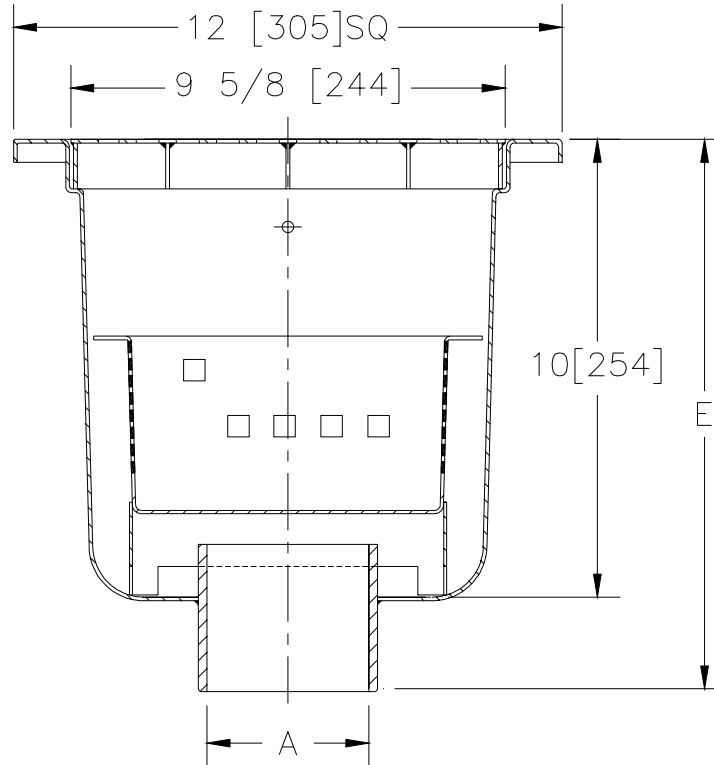


Z-1752-117
12 X 12 [305 X 305] SANI-FLOR RECEPTOR
10" [254] SUMP DEPTH

SPECIFICATION SHEET

TAG _____

Dimensional Data (inches and [mm]) are Subject to Manufacturing Tolerances and Change Without Notice



A- Pipe Size In.	Approx. Wt. Lbs. [kg]	Grate Open Area Sq. In. [cm ²]
2-3-4 [51-76-102]	22 [10]	23 [148]

ENGINEERING SPECIFICATION: ZURN Z-1752-117
 12 x 12 x 10 [305 x 305 x 254] deep, 14 gage, All Type 304 (CF8) Stainless Steel light duty Sani-Flor receptor with non-tilt, loose set full grate with 1/2 [13] square openings and bell trap sediment bucket.

OPTIONS (Check/specify appropriate options)

PIPE SIZE
 2 thru 4 [51 thru 102]

(Specify size/type) **OUTLET**
 _____ NH No-Hub

'E' BODY HT. DIM.
 12 1/16 [306]

PREFIXES

- _____ Z- Type 304 (CF8) Stainless Steel Body*
- _____ ZM- Type 316 (CF8M) Stainless Steel

SUFFIXES

- _____ -DX Dexotex Flange
- _____ -HD Extra Heavy Duty Top Frame & Grate
- _____ -HP Heelproof Grate
- _____ -K Seepage Pan
- _____ -KC Seepage Pan With Clamp Collar
- _____ -P 1/2 [13] Trap Primer Connection
- _____ -VP Vandal Proof Secured Top
- _____ -1 (Less) Grate
- _____ -2 1/2 Grate
- _____ -3 3/4 Grate
- _____ -4 Full Grate With 3 [76] Square Opening
- _____ -5 Grate w/4 [102] dia. x 3 3/4 [95] High Funnel
- _____ -8 Grate w/8 3/8 x 3 5/8 x 3 3/4 [213 x 92 x 95] High Oval Funnel
- _____ -16 1/2 Solid Cover
- _____ -17 3/4 Solid Cover
- _____ -18 Solid Cover With 3 [76] Square Center Opening

*REGULARLY FURNISHED UNLESS OTHERWISE SPECIFIED

REV.	DATE: 12/6/99	C.N. NO. 84034
DWG. NO. P-14758 PRODUCT NO. Z-1752-117		