



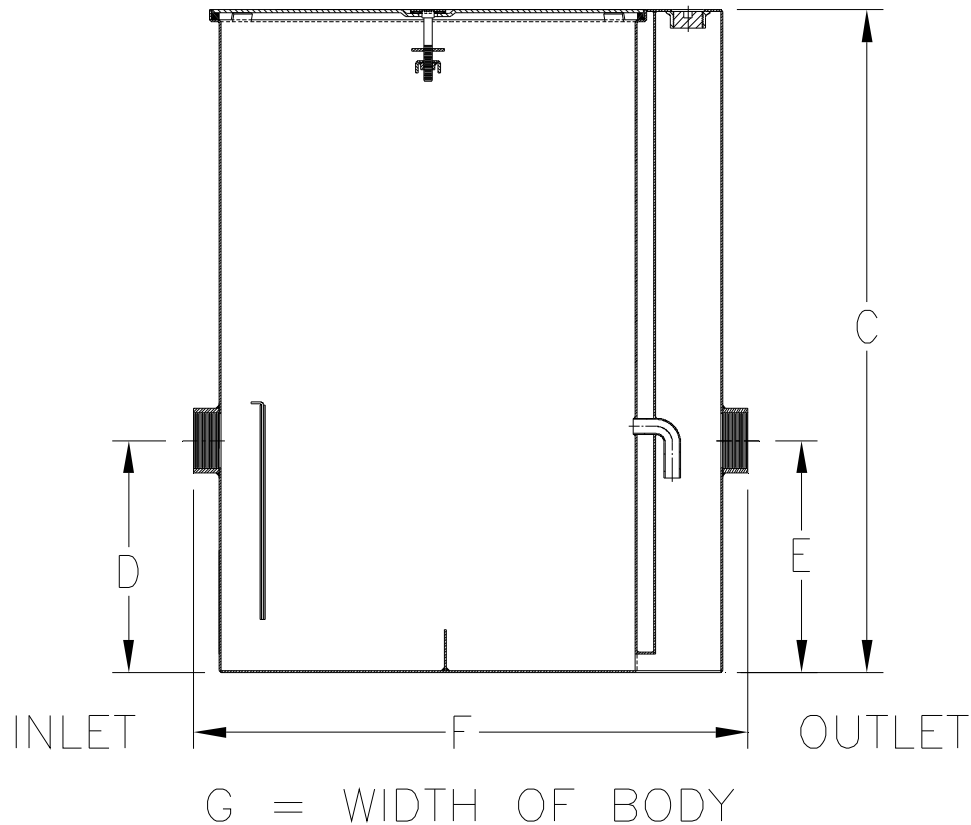
# Z1170-126

## GREASE INTERCEPTOR WITH 22 [559] INTEGRAL EXTENSION

SPECIFICATION SHEET

TAG \_\_\_\_\_

Dimensional Data (inches and [ mm ]) are Subject to Manufacturing Tolerances and Change Without Notice



Size	Inlet/ Outlet Size**	Flow Rate G.P.M. [L]	Capacity		Approx. Wt. Lbs. [kg]	Dimensions in Inches			
			Water Gal. [L]	Grease Lbs. [kg]		C	D/E	F	G
700	3 [75]	35 [132]	30 [113]	70 [32]	151 [68]	40 3/4 [1305]	14 1/4 [362]	34 1/8 [867]	22 1/2 [572]

**ENGINEERING SPECIFICATION:** ZURN Z1170-126 Acid Resistant Coated interior and exterior fabricated steel grease interceptor, with integral extension PDI, rated at \_\_\_\_\_ GPM and \_\_\_\_\_ Lbs. grease capacity, with internal air relief by-pass, bronze cleanout plug, removable pressure equalizing/flow diffusing inlet baffle, fixed bottom outlet baffle, and visible double wall trap seal. Gasketed non-skid secured cover complete with center tie down assembly, with Z1108 flow control fitting.

Note: Location of outlet from bottom of interceptor cannot be changed.

**PREFIXES**

- \_\_\_ Z     Acid Resistant Coated Fabricated Steel\*
- \_\_\_ ZS    All Type 304 Fabricated Stainless Steel

**SUFFIXES**

- \_\_\_ -AL    Aluminum Cover
- \_\_\_ -HD    Heavy Duty Cover rated at 10,000 lbs. [4536 kg.] maximum safe live load.
- \_\_\_ -L     Angle type (Z1108-L) flow control device with plunger.

\*\* Inlet and outlet size shown is standard operating size and flow control setting. #700 will have 4 [102] connections reduced to 3 [76] as standard. If changed, flow control must be adjusted accordingly.

<b>REV.</b>	<b>DATE: 3/27/08</b>	<b>C.N. NO. 98290</b>
<b>DWG. NO. P-15532    PRODUCT NO. Z1170-126</b>		

\*REGULARLY FURNISHED UNLESS OTHERWISE SPECIFIED