

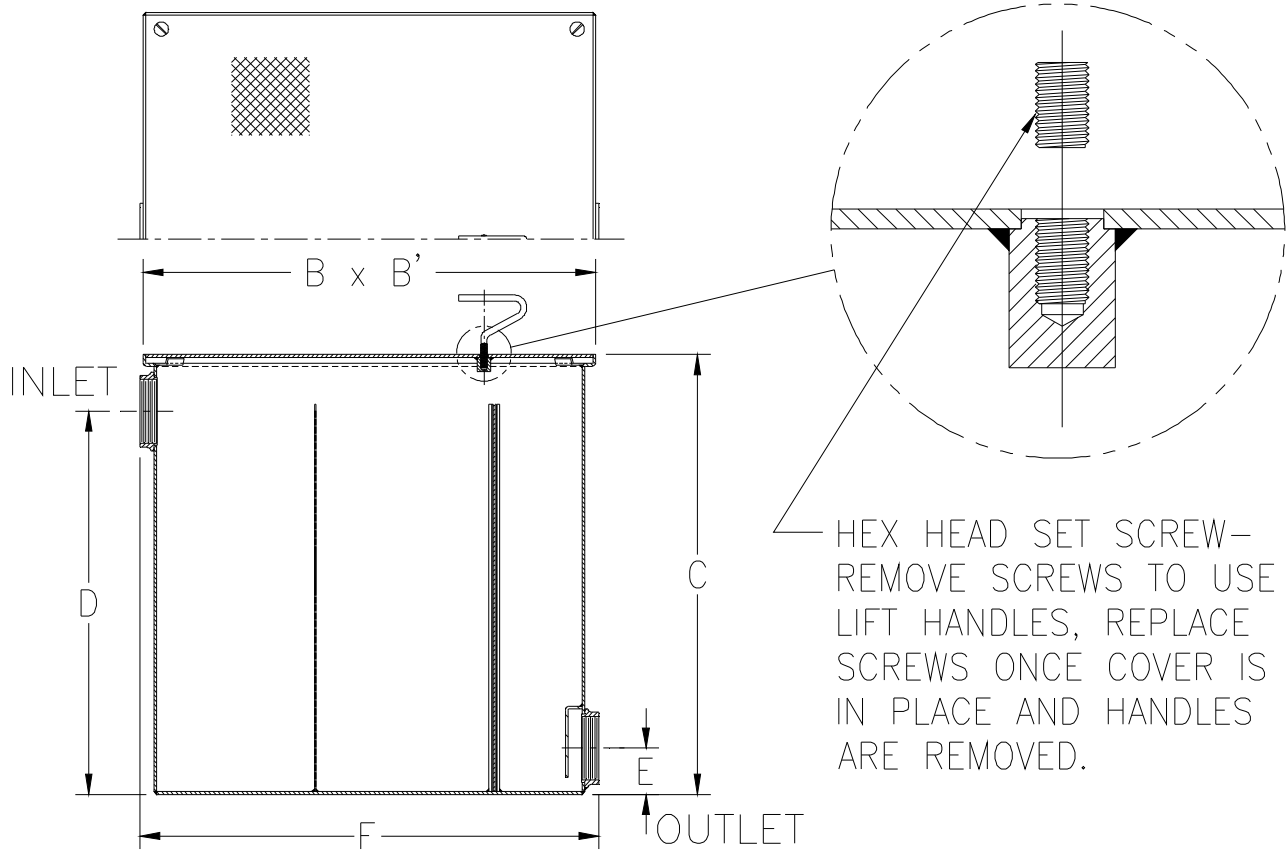


Z1185-153
CUSTOM LINT INTERCEPTOR FOR 214 GPM

SPECIFICATION SHEET

TAG _____

Dimensional Data (inches and [mm]) are Subject to Manufacturing Tolerances and Change Without Notice



| Size No. of Machines | Inlet/Outlet Size In. [mm] | Flow Rate G.P.M. [LPM] | Approx. Wt. Lbs. [kg] | Dimensions in Inches [mm] | | | | | |
|----------------------|----------------------------|------------------------|-----------------------|---------------------------|-----------|--------------|----------|---------|-----------|
| | | | | B | B' | C | D | E | F |
| 20 | 6 [152] | 214 [973] | 654 [297] | 45 [1143] | 45 [1143] | 32-1/2 [826] | 28 [711] | 5 [127] | 46 [1168] |

ENGINEERING SPECIFICATION: ZURNZ1185-153

Acid Resistant Coated interior and exterior fabricated steel lint interceptor, non-skid secured cover with removable lift handle, aluminum lint intercepting secondary screen assembly, and permanent primary straining baffle with 3/8" [10 mm] diameter perforated holes. Regularly furnished with high inlet and low outlet.

OPTIONS (Check/specify appropriate options)

PREFIXES

- ___ Z Acid Resistant Coated Fabricated Steel*
- ___ ZS All Type 304 Fabricated Stainless Steel

SUFFIXES

- ___-E Acid Resistant Coated interior and exterior fabricated steel extension section (Specify 'C' dimension required for recessed installation).
- ___-RS Aluminum Screen Replacement Assembly

* Regularly furnished unless otherwise specified.