

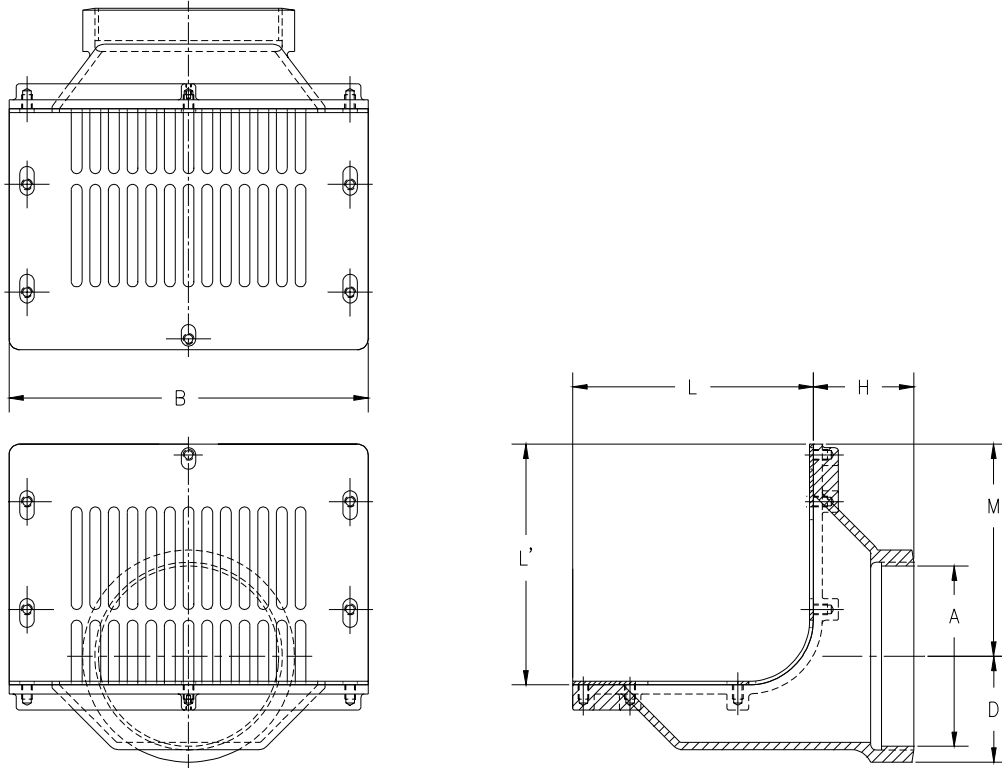


Z-187-84

8" X 12" [203 X 305] SCUPPER DRAIN WITH SCREW SLOT FOR SECURING

TAG _____

Dimensional Data (inches and [mm]) are Subject to Manufacturing Tolerances and Change Without Notice



A-Pipe Size Inches	Dimensions In Inches [mm]						Approx. Wt. Lbs. [kg]	Grate Open Area Sq. In. [cm ²]
	B	D	H	L	L'	M		
4 [100]	12 1/2 [318]	2 1/2 [64]	3 1/2 [89]	8 3/8 [213]	8 3/8 [213]	8 1/2 [216]	32 [15]	50.1 [323]
5 [125]		3 1/16 [78]				7 7/8 [200]	32 [15]	
6 [150]		3 5/8 [92]				7 3/8 [187]	32 [15]	
8 [200]		4 5/8 [117]				6 3/8 [162]	33 [15]	

ENGINEERING SPECIFICATION: ZURN Z-187-84 8 x 12 [203 x 305] Scupper drain, Dura-Coated cast iron body with reversible back or bottom outlet and 90° flat grate with screw slots for securing.

OPTIONS (Check/specify appropriate options)

PIPE SIZE

4, 5, 6, 8 [100, 125, 150, 200]

(Specify size/type) **OUTLET**

_____ IP Threaded

'E' BODY HT. DIM.

See Chart

PREFIXES

- _____ Z- D.C.C.I. Body with Grate*
- _____ ZB- D.C.C.I. Body with Polished Bronze Grate
- _____ ZN- D.C.C.I. Body with Polished Nickel Bronze Grate

SUFFIXES

- _____ -G Galvanized Cast Iron
- _____ -TS Secured Top With Slotted Screws
- _____ -VP Vandal Proof Secured Top

*REGULARLY FURNISHED UNLESS OTHERWISE SPECIFIED

REV. A	DATE: 1/3/02	C.N. NO. 88233
DWG. NO. P-14578 PRODUCT NO. Z-187-84		