



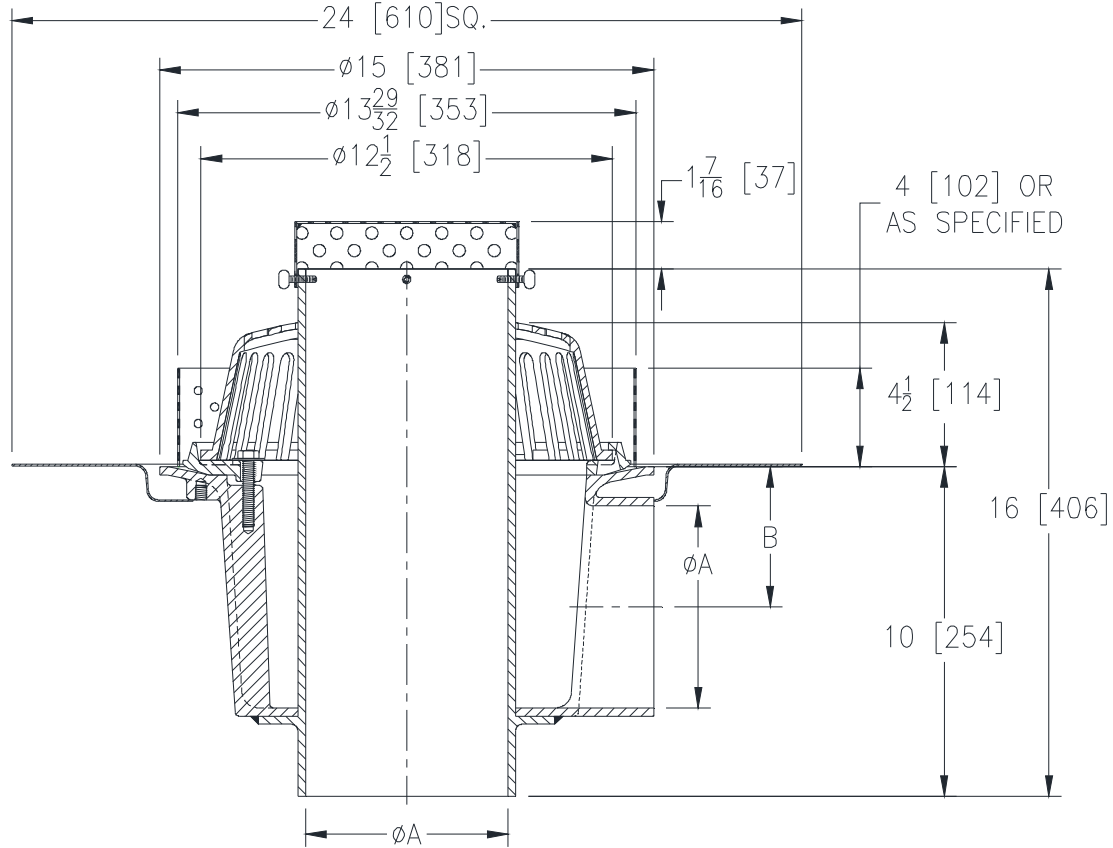
Z103-DP-MS-84

15 [381] DIAMETER DEEP SUMP DUAL OUTLET ROOF DRAIN W/
DECK PLATE, PERFORATED SCREEN ON OVERFLOW PIPE AND
PERFORATED GRAVEL GUARD

SPECIFICATION SHEET

TAG _____

Dimensional Data (inches and [mm]) are Subject to Manufacturing Tolerances and Change Without Notice



A Pipe Size In. [mm]	B In. [mm]	Approx. Wt. Lbs. [kg]	Dome Open Area Sq. In. [cm ²]
3 [76]	5-9/16 [141]	60 [27]	103 [665]
4 [102]	5-1/16 [129]		
6 [152]	4 [102]		

ENGINEERING SPECIFICATION: ZURN Z103-DP-MS-84

15" [381mm] Diameter dual outlet roof drain with 90° primary outlet connection. Dura-Coated cast iron deep sump body with combination membrane flashing clamp, overflow pipe (3", 4", 6" [76mm, 102mm, 152mm]), low silhouette cast iron dome, stainless steel perforated gravel guard, Top-Set® Deck Plate, and perforated screen on overflow pipe.

OPTIONS (Check/specify appropriate options)

PIPE SIZE 3, 4, 6 [76, 102, 152] (Specify size) **OUTLET** _____ NH No-Hub

PREFIXES
____ Z D.C.C.I. Body w/ Cast Iron Dome*

SUFFIXES
____ -AR Acid Resistant Epoxy Coated Finish
____ -E Static Extension 1 [25] thru 4 [102] (Specify Ht)
____ -G Galvanized Cast Iron
____ -VP Vandal-Proof Secured Top
____ -45 45° Primary Outlet Connection (3, 4 [76, 102] Pipe only)

* Regularly furnished unless otherwise specified.