



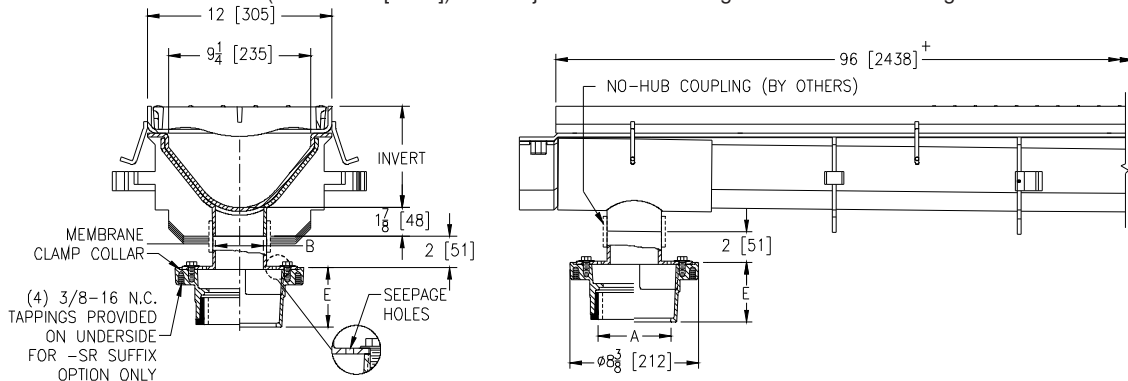
Z882-79

12 [305] WIDE TRENCH DRAIN SYSTEM W/ LOWER DRAIN ASSEMBLY

SPECIFICATION SHEET

TAG _____

Dimensional Data (inches and [mm]) are Subject to Manufacturing Tolerances and Change Without Notice



PIPE SIZE (Lower Body)

- 2,3,4 [51,76,102]
- 2,3,4 [51,76,102]
- 2 [51]
- 3 [76]
- 4 [102]
- 2,3,4 [51,76,102]
- 2,3,4 [51,76,102]

(Specify size/type) OUTLET

- ___ IC Inside Caulk
- ___ IG Inside Gasket
- ___ IP Threaded
- ___ IP Threaded
- ___ IP Threaded
- ___ NH No-Hub
- ___ NL Neo-Loc

'E' BODY HT. DIM.

- 3-7/8 [98]
- 3-7/8 [98]
- 2-3/8 [60]
- 2-5/8 [67]
- 2-7/8 [73]
- 3-7/8 [98]
- 3-3/4 [95]

A	B
Pipe Size	Trench Outlet
2,3,4	2,3,4
[51,76,102]	[51,76,102]

NO-HUB BOTTOM OUTLET SIZE (Trench)

- 2 [51] _____ 3 [76] _____ 4 [102] _____

**For invert/slope dimensions see standard Z882 specification sheet.

ENGINEERING SPECIFICATION: Zurn Z882-79

Channels shall be 96" [2438mm] long, 12" [305mm] wide reveal and have a 9-1/4" [235mm] throat. Modular channel sections shall be made of 0% water absorbent High Density Polyethylene (HDPE). Shall have a positive mechanical connection between channel sections that will not separate during the installation and shall mechanically lock into the concrete surround every 12" [305mm]. Channels shall have a smooth, 3" [76mm] radiused self cleaning bottom with a Manning's coefficient of 0.009 and 1.04% or neutral 0% built in slope. Channels shall have rebar clips standard to secure trench in its final location. The 1/4" [6mm] thick Heavy-Duty Carbon Steel Frame Assembly conforms to ASTM specification A36 with 10 - 4" [102mm] long concrete anchors per 96" [2438mm]. Grate lockdown bars are to be integral to the frame. The frame is supplied with a powder coated finish. All welds must be performed by a certified welder per ASTM standard AWS D1.1. Frames shall be produced in the U.S.A. 2", 3" or 4" [51mm, 76mm or 102mm] No-Hub bottom outlet for connection to the lower body. Z415 lower body assembly is Dura-Coated Cast Iron with clamp collar and weepholes.

PREFIX OPTIONS (Check/specify appropriate options)

- ___ Z Eight-foot High Density Polyethylene (HDPE) Channel, Heavy-Duty Frame with Anchor Studs.*

SUFFIX OPTIONS (Check/specify appropriate options)

Outlet Adapters Add/Each

- ___ -E1 Closed End Cap

Grate Options (Load Classifications are per DIN EN1433)

- ___ -BDC Black Acid Resistant Epoxy Coated Ductile Grate - Class C
- ___ -BDE Black Acid Resistant Epoxy Coated Ductile Grate - Class E
- ___ -DC Ductile Iron Solid Cover - Class C
- ___ -DGC Ductile Iron Slotted Grate - Class C *
- ___ -DGE Ductile Iron Slotted Grate - Class E
- ___ -DGF Ductile Iron Slotted Grate - Class F
- ___ -GDC Galvanized Ductile Slotted Grate - Class C
- ___ -GDE Galvanized Ductile Slotted Grate - Class E
- ___ -GDF Galvanized Ductile Slotted Grate - Class F
- ___ -GHPD Galvanized Heel-Proof Ductile Grate - Class B
- ___ -GHPDE Galvanized Heel-Proof Ductile Slotted Grate - Class E

Grate Options (cont'd)

- ___ -HPD Heel-Proof Ductile Slotted Grate - Class B
- ___ -HPDE Heel-Proof Ductile Slotted Grate - Class E

Miscellaneous Options

- ___ -AR Acid Resisting Epoxy Coated Cast Iron (Lower Body)
- ___ -CBF Black Acid Resistant Coated Top Frame
- ___ -G Galvanized Cast Iron (Lower Body)
- ___ -JC Joint Connector
- ___ -P Trap Primer Connection (Lower Body)
- ___ -SW Sidewall Extensions - 11 [279] High
- ___ -SW2 Double Sidewall Extensions - 22 [559] High
- ___ -VP Vandal-Proof Lockdown

MADE in the U.S.A.

- ___ -ADA-USA Meets Americans with Disabilities Act Requirements - Class C
- ___ -BG Galvanized Steel Bar Grate - Class D
- ___ -DGC-USA Ductile Iron Slotted Grate - Class C
- ___ -DGE-USA Ductile Iron Slotted Grate - Class E
- ___ -FG Fabricated Galvanized Steel Slotted Grate - Class A
- ___ -FS Fabricated Stainless Steel Slotted Grate - Class A
- ___ -GADA-USA Galvanized Ductile ADA Slotted Grate - Class C
- ___ -GDC-USA Galvanized Ductile Slotted Grate - Class C
- ___ -GDE-USA Galvanized Ductile Slotted Grate - Class E
- ___ -GG Fiberglass Grate - Class A
- ___ -PG Perforated Galvanized Steel Grate - Class A
- ___ -PS Perforated Stainless Steel Grate - Class A
- ___ -RFG Reinforced Galvanized Slotted Grate - Class B
- ___ -RFS Reinforced Stainless Steel Slotted Grate - Class B
- ___ -RPG Reinforced Galvanized Perforated Grate - Class B
- ___ -RPS Reinforced Stainless Steel Perforated Grate - Class B
- ___ -SBG-L Stainless Steel Bar Grate - Class B
- ___ -DB Bottom Dome Strainer

* Regularly furnished unless otherwise specified.