



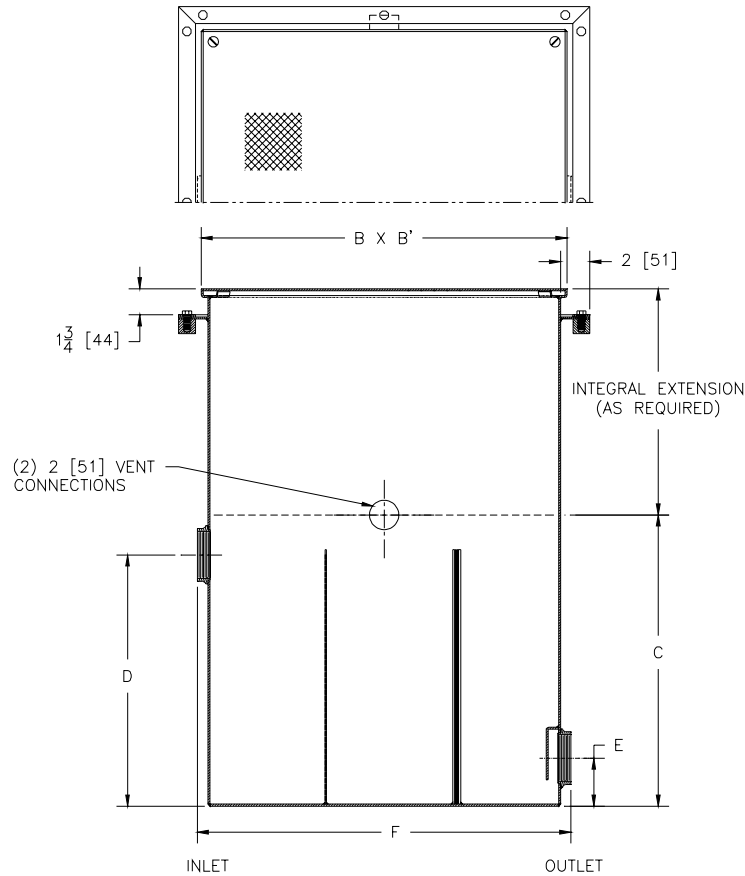
# Z1185-93

SPECIFICATION SHEET

## LINT INTERCEPTOR W/ INTEGRAL EXTENSION, ANCHOR FLANGE, CLAMP COLLAR, AND VENT CONNECTIONS

TAG \_\_\_\_\_

Dimensional Data (inches and [ mm ]) are Subject to Manufacturing Tolerances and Change Without Notice



Size No. of Machines	Inlet/Outlet Size**	Flow Rate G.P.M. [L]	Approx. Wt. Lbs. [kg]	Dimensions In Inches					
				B	B'	C	D	E	F
3	2 [50]	30 [113]	93 [42]	17 [432]	17 [432]	16 1/2 [419]	13 1/2 [343]	3 1/4 [82]	17 1/4 [438]
7	3 [75]	70 [265]	155 [70]	25 [635]	25 [635]	20 [508]	17 [432]	3 1/4 [82]	25 1/2 [648]
10	4 [100]	100 [378]	271 [123]	33 [838]	33 [838]	28 [711]	25 [635]	4 [102]	34 [864]
20	4 [100]	200 [756]	404 [183]	40 [1016]	40 [1016]	35 [889]	32 [813]	4 [102]	41 [1041]
30	6 [150]	300 [1134]	654 [297]	45 [1143]	45 [1143]	40 [1016]	36 [914]	5 [127]	46 [1168]
40	6 [150]	400 [1512]	723 [328]	48 [1219]	48 [1219]	43 [1092]	39 [991]	5 [127]	49 [1245]
50	6 [150]	500 [1890]	911 [414]	52 [1321]	52 [1321]	47 [1194]	43 [1092]	5 [127]	53 [1346]

**ENGINEERING SPECIFICATION:** ZURN Z1185-93 Acid Resistant Coated interior and exterior fabricated steel lint interceptor with integral extension, anchor flange with clamp collar, 2 [51] threaded vent connections, non-skid secured cover, stainless lint intercepting secondary screen assembly and permanent primary straining baffle. Regularly furnished with high inlet and low outlet.

**OPTIONS** (Check/specify appropriate options)

**PREFIXES**

\_\_\_\_\_ Z Acid Resistant Coated Fabricated Steel\*

**SUFFIXES**

\_\_\_\_\_ RS- Stainless Steel Screen Replacement Assembly

\*REGULARLY FURNISHED UNLESS OTHERWISE SPECIFIED

<b>REV. A</b>	<b>DATE: 2/4/05</b>	<b>C.N. NO. 92930</b>
<b>DWG. NO. P-15009 PRODUCT NO. Z1185-93</b>		

ZURN INDUSTRIES, INC. ♦ SPECIFICATION DRAINAGE OPERATION ♦ 1801 Pittsburgh Ave. ♦ Erie, PA 16514

Phone: 814/455-0921 ♦ Fax: 814/454-7929 ♦ World Wide Web: www.zurn.com

In Canada: ZURN INDUSTRIES LIMITED ♦ 3544 Nashua Drive ♦ Mississauga, Ontario L4V1L2 ♦ Phone: 905/405-8272 Fax: 905/405-1292