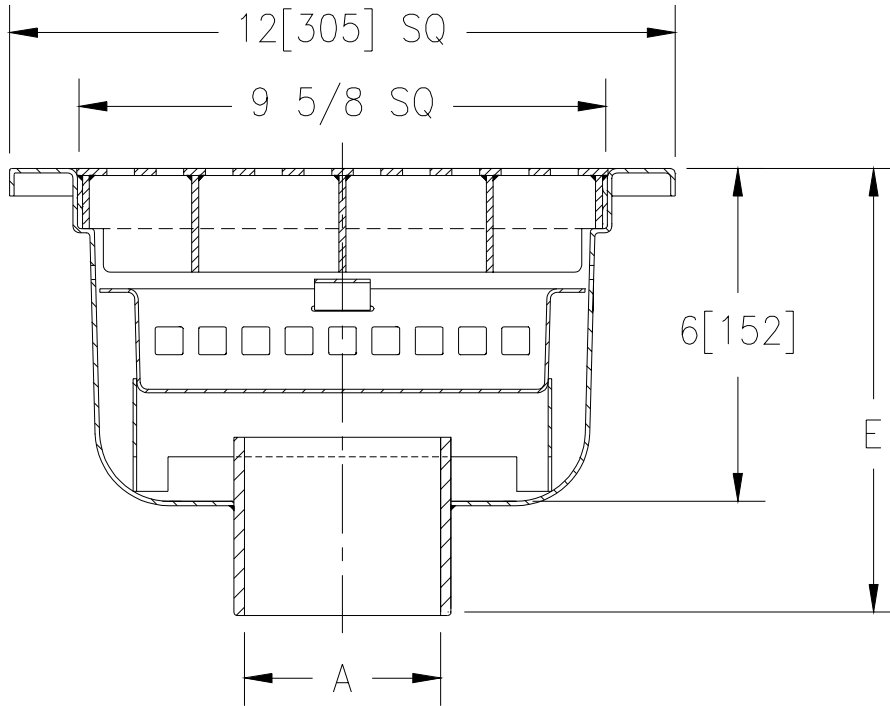




Z-1750-105
 12 [305] x 12 [305] SANI-FLOR RECEPTOR
 6 [152] Sump Depth

TAG _____

Dimensional Data (inches and [mm]) are Subject to Manufacturing Tolerances and Change Without Notice



A- Pipe Size In. [mm]	Approx. Wt. Lbs.[kg]	Grate Open Area Sq. In. [cm ²]
2-3-4 [50-75-100]	18 [8]	24 [155]

ENGINEERING SPECIFICATION: ZURN Z-1750-105
 12 [305] x 12 [305] x 6 [152] deep, 14 gage, All Type 304 (CF8) Stainless Steel light duty Sani-Flor receptor, with non-tilt, loose set heavy duty grate with 1/2 [13] square openings with 10,000 Lb. [4,536] wheel load and bell trap sediment bucket.

OPTIONS (Check/specify appropriate options)

PIPE SIZE (Specify size/type) **OUTLET** **'E' BODY HT. DIM.**
 2 thru 4 _____ NH No-Hub 8 1/16

PREFIXES

- _____ Z- Type 304 (CF8) Stainless Steel *
- _____ ZM- Type 316 (CF8M) Stainless Steel*

SUFFIXES

- _____ -K Seepage Pan
- _____ -KC Seepage Pan With Clamp Collar
- _____ -P 1/2 Trap Primer Connection
- _____ -2 1/2 Grate
- _____ -3 3/4 Grate
- _____ -4 Full Grate With 3 [76] Square Opening
- _____ -5 Grate w/4 [102] dia. x 3 3/4 [95] High Funnel
- _____ -8 Grate w/8 3/8 [213] x 3 5/8 [92] x 3 3/4 [95] High Oval Funnel

REV.	DATE: 6/24/97	C.N. NO. 78044
DWG. NO. P-14492 PRODUCT NO. Z-1750-105		

*REGULARLY FURNISHED UNLESS OTHERWISE SPECIFIED