



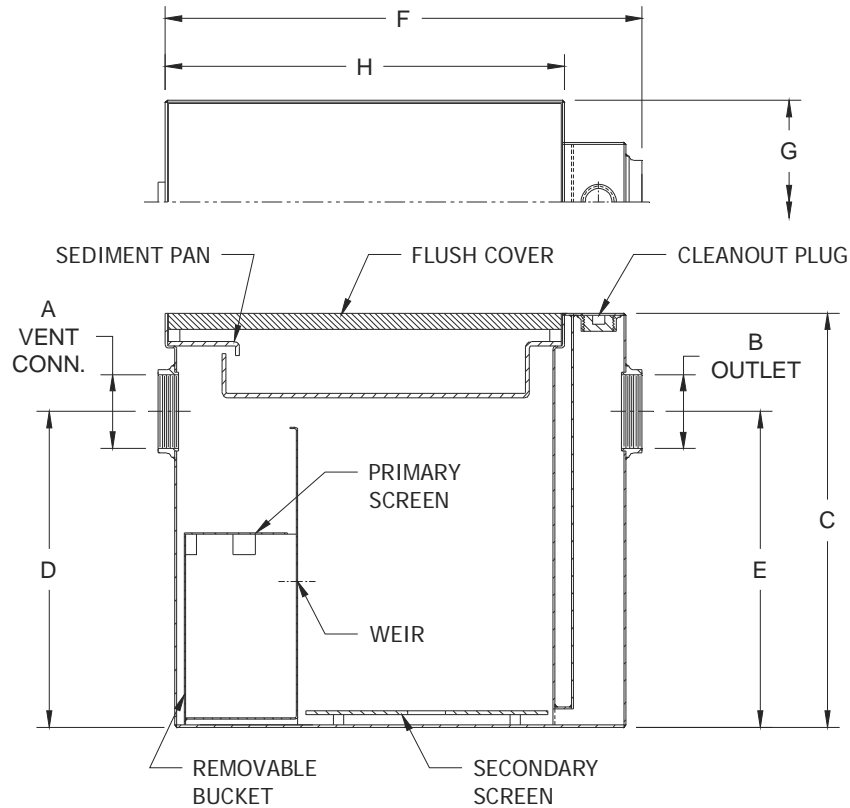
Z1189-96

SIZE 300 OIL/SEDIMENT INTERCEPTOR WITH HEAVY-DUTY SOLID TRAFFIC COVER & 4 [102] VENT

SPECIFICATION SHEET

TAG _____

Dimensional Data (inches and [mm]) are Subject to Manufacturing Tolerances and Change Without Notice



Size	Sludge Capacity Lbs. [kg]	No. of Covers	No. of Pans	Approx. Wt. Lbs. [kg]	A Vent Size	B Pipe Size	Dimension In Inches [mm]					
							C	D	E	F	G	H
300	300 [136]	4	1	460 [208]	4 [102]	4 [102]	33 [838]	27 [686]	22 [559]	53-1/8 [1349]	24-3/8 [619]	48-3/8 [1229]

ENGINEERING SPECIFICATION: ZURN Z1189-96

Acid Resistant Coated interior and exterior fabricated steel oil/sediment interceptor, bronze cleanout plug and visible double wall trap seal, removable sediment bucket, horizontal baffle, 4" [102mm] internal vent connection, with Dura-Coated heavy-duty solid traffic cover (maximum safe live load 10,000 lbs. [4536kg].)

PREFIXES

___ Z Acid Resistant Coated Fabricated Steel*

SUFFIXES

___ -E Acid Resistant Coated Interior and exterior fabricated steel extension section. (Specify 'C' Dim. required)
 ___ -K Anchor flange 1 3/4 [44] down from top and 2 [51] wide.
 ___ -K Anchor flange 1 3/4 [44] down from top and 2 [51] wide with seepage holes and clamp collar.

* Regularly furnished unless otherwise specified.