



# Z882-E8

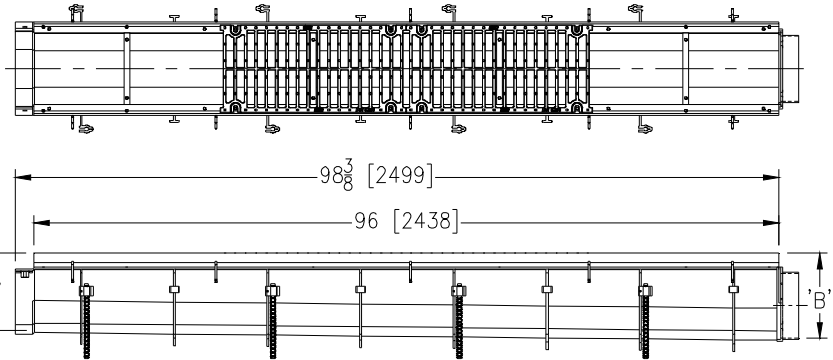
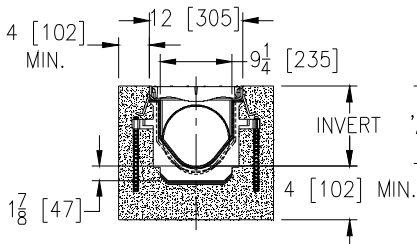
## SPECIFICATION SHEET

### 12 [305] WIDE REVEAL TRENCH DRAIN SYSTEM W/ STEEL FRAME & 8 [203] DIAMETER END OUTLET

TAG \_\_\_\_\_

Dimensional Data (inches and [ mm ]) are Subject to Manufacturing Tolerances and Change Without Notice

SPECIFYING ENGINEER IS RESPONSIBLE FOR CONCRETE ENCASEMENT AND REINFORCING BASED UPON APPLICATION AND LOCAL CODES



#### ENGINEERING SPECIFICATION: Zurn Z882-E8

Channels shall be 96 [2438] long, 12 [305] wide reveal and have a 9-1/4 [235] throat. Modular channel sections shall be made of 0% water absorbent High Density Polyethylene (HDPE). Shall have a positive mechanical connection between channel sections that will not separate during the installation and shall mechanically lock into the concrete surround every 12 [305]. Channels shall weigh less than 5.05 lbs. [2.29kg] per linear foot, have a smooth, 3 [76] radiused self cleaning bottom with a Manning's coefficient of .009 and 1.04% or neutral 0% built in slope. Channels shall have rebar clips standard to secure trench in its final location. Channel will have an eight inch diameter end outlet. Channels shall be provided with standard DGC grates that lock down to frame. Zurn 12 [305] wide reveal Ductile Iron Slotted Grate conforming to ASTM specification A536-84, Grade 80-55-06. Ductile Iron grate is rated class C per the DIN EN1433 top load classifications. Supplied in 24 [608] nominal lengths with 13/16 [21] wide slots, and 1-1/2 [38] bearing depth. Grate has an open area of 80.8sq. in per ft. [171,027 sq. mm per meter]. The 1/4 [6] thick Heavy-Duty Carbon Steel Frame Assembly conforms to ASTM specification A36 with 10 - 4 [102] long concrete anchors per 96 [2438]. Grate lockdown bars are to be integral to the frame. The frame is supplied with a powder coated finish. All welds must be performed by a certified welder per ASTM standard AWS D1.1. Frames Shall be produced in the U.S.A.

#### PREFIX OPTIONS (Check/specify appropriate options)

- \_\_\_ Z Eight-foot High Density Polyethylene (HDPE) Channel, Heavy-Duty Frame with Anchor Studs.\*

#### SUFFIX OPTIONS (Check/specify appropriate options)

##### Outlet Adapters Add/Each

- \_\_\_ -E1 Closed End Cap
- \_\_\_ -U4 4 [102] No-Hub Bottom Outlet
- \_\_\_ -U6 6 [152] No-Hub Bottom Outlet
- \_\_\_ -U8 8 [203] No-Hub Bottom Outlet

##### Grate Options (Load Classifications are per DIN EN1433)

- \_\_\_ -BDC Black Acid Resistant Epoxy Coated Ductile Grate - Class C
- \_\_\_ -BDE Black Acid Resistant Epoxy Coated Ductile Grate - Class E
- \_\_\_ -DC Ductile Iron Solid Cover - Class C
- \_\_\_ -DGC Ductile Iron Slotted Grate - Class C \*
- \_\_\_ -DGE Ductile Iron Slotted Grate - Class E
- \_\_\_ -DGF Ductile Iron Slotted Grate - Class F
- \_\_\_ -GDC Galvanized Ductile Slotted Grate - Class C
- \_\_\_ -GDE Galvanized Ductile Slotted Grate - Class E
- \_\_\_ -GDF Galvanized Ductile Slotted Grate - Class F
- \_\_\_ -GHPD Galvanized Heel-Proof Ductile Grate - Class B
- \_\_\_ -GHPDE Galvanized Heel-Proof Ductile Slotted Grate - Class E
- \_\_\_ -HPD Heel-Proof Ductile Slotted Grate - Class B
- \_\_\_ -HPDE Heel-Proof Ductile Slotted Grate - Class E
- \_\_\_ -RFGC Reinforced Slotted Galvanized Grate - Class C
- \_\_\_ -RPGC Reinforced Perforated Galvanized Grate - Class C
- \_\_\_ -RPGRC Reinforced Perforated Galvanized Reverse Punch Grate - Class C

Trench No.	'A'		Flow		
	Shallow Inv.	Deep Inv.	(cfs)	(gpm)	(lps)
8204	9.25 [235]	10.25 [260]	2.745	1232	78
8205	10.25 [260]	11.25 [286]	3.271	1468	93
8206	11.25 [286]	12.25 [311]	3.808	1709	108
8206N	12.25 [311]	12.25 [311]	-	-	-
8207	12.25 [311]	13.25 [337]	4.347	1951	123
8208	13.25 [337]	14.25 [362]	4.893	2196	139
8209	14.25 [362]	15.25 [387]	5.443	2443	155
8209N	15.25 [387]	15.25 [387]	-	-	-
8210	15.25 [387]	16.25 [413]	5.996	2691	170
8211	16.25 [413]	17.25 [438]	6.551	2940	186
8212	17.25 [438]	18.25 [464]	7.106	3189	202

- \_\_\_ -RFSC Reinforced Slotted Stainless Steel Grate - Class C
- \_\_\_ -RPSC Reinforced Perforated Stainless Steel Grate - Class C
- \_\_\_ -RPSRC Reinforced Perforated Stainless Steel Reverse Punch Grate - Class C

##### Miscellaneous Options

- \_\_\_ -CBF Black Acid Resistant Coated Top Frame
- \_\_\_ -JC Joint Connector
- \_\_\_ -SW Sidewall Extensions - 11 [279] High
- \_\_\_ -SW2 Double Sidewall Extensions - 22 [559] High
- \_\_\_ -VP Vandal-Proof Lockdown

#### MADE in the U.S.A.

- \_\_\_ -ADA-USA Meets Americans with Disabilities Act Requirements - Class C
- \_\_\_ -BG Galvanized Steel Bar Grate - Class D
- \_\_\_ -DGC-USA Ductile Iron Slotted Grate - Class C
- \_\_\_ -DGE-USA Ductile Iron Slotted Grate - Class E
- \_\_\_ -FG Fabricated Galvanized Steel Slotted Grate - Class A
- \_\_\_ -FS Fabricated Stainless Steel Slotted Grate - Class A
- \_\_\_ -GADA-USA Galvanized Ductile ADA Slotted Grate - Class C
- \_\_\_ -GDC-USA Galvanized Ductile Slotted Grate - Class C
- \_\_\_ -GDE-USA Galvanized Ductile Slotted Grate - Class E
- \_\_\_ -GG Fiberglass Grate - Class A
- \_\_\_ -GHPDE-USA Galvanized Ductile Slotted Grate - Class E
- \_\_\_ -HPDE-USA Heel-Proof Ductile Slotted Grate - Class E
- \_\_\_ -PG Perforated Galvanized Steel Grate - Class A

- \_\_\_ -PS Perforated Stainless Steel Grate - Class A
- \_\_\_ -RFG Reinforced Galvanized Slotted Grate - Class B
- \_\_\_ -RFS Reinforced Stainless Steel Slotted Grate - Class B
- \_\_\_ -RPG Reinforced Galvanized Perforated Grate - Class B
- \_\_\_ -RPS Reinforced Stainless Steel Perforated Grate - Class B
- \_\_\_ -SBG-L Stainless Steel Bar Grate - Class C

##### Miscellaneous Options

- \_\_\_ -DB Bottom Dome Strainer

REV. B DATE: 5/9/12 C.N. NO. 124283

PROD/DWG. NO. Z882-E8

\*REGULARLY FURNISHED UNLESS OTHERWISE SPECIFIED

ZURN INDUSTRIES, LLC ♦ SPECIFICATION DRAINAGE OPERATION ♦ 1801 Pittsburgh Ave. ♦ Erie, PA 16514

Phone: 814/455-0921 ♦ Fax: 814/454-7929 ♦ World Wide Web: www.zurn.com

In Canada: ZURN INDUSTRIES LIMITED ♦ 3544 Nashua Drive ♦ Mississauga, Ontario L4V1L2 ♦ Phone: 905/405-8272 Fax: 905/405-1292