



Z890-111

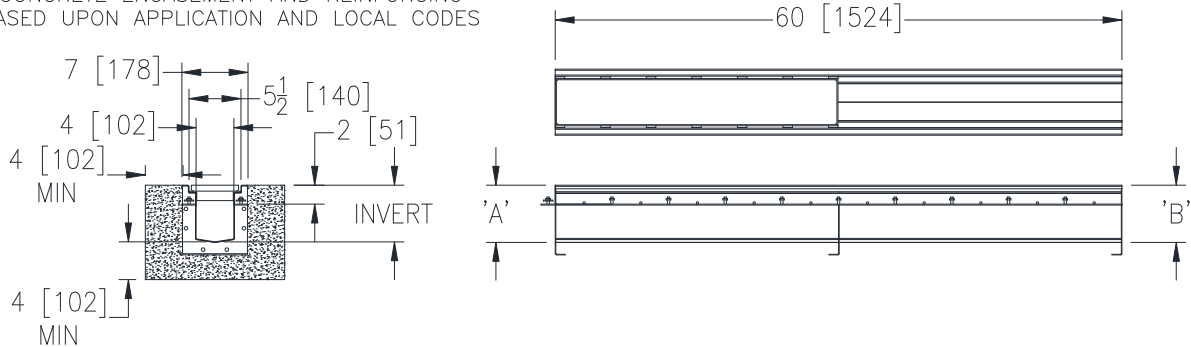
7[178]WIDE REVEAL TRENCH DRAIN SYSTEM WITH PAN, CLAMPING COLLAR & TILE INLAY GRATE

SPECIFICATION SHEET

TAG _____

Dimensional Data (inches and [mm]) are Subject to Manufacturing Tolerances and Change Without Notice

SPECIFYING ENGINEER IS RESPONSIBLE FOR
CONCRETE ENCASEMENT AND REINFORCING
BASED UPON APPLICATION AND LOCAL CODES



ENGINEERING SPECIFICATION: Zurn Z890-111

Channels are 60" [1524mm] long, 7" [178mm] wide and have a 4" [102mm] throat. Modular channel sections are made of 16ga. fabricated Stainless Steel conforming to ASTM A-240 (Type 304SS or Type 316SS by request). Channels have a bolted, flanged connection between channel sections that will not separate during the installation, gaskets available. Channels provided with 1/8" [3mm] weep holes above the pan, with a continuous water tight weld of the clamp collar, studs to be provided for attachment of provided clamp collar on 6" [152mm] centers. Channels weigh less than 2.31 lbs. [1.05kg] per linear foot, have a smooth, 1-1/2" [38mm] radiused self cleaning bottom with a Manning's coefficient of .009 and 1.04% or neutral 0% built in slope. Channels have feet for patty pour or leveling studs standard to secure trench in its final location. Channels provided with TG tile inlay grate. Zurn 6" [152mm] wide reveal Fabricated Stainless Steel Inlay Grate conforming to ASTM specification A-240, (Type 304SS or Type 316SS by request), is rated class A per the DIN EN1433 top load classification. Supplied in 30" [762mm] nominal lengths with 3/16" [5mm] wide slots, and 5/8" [16mm] deep tray for tile inlay applications. Grate has an open area of 6 sq. in per ft. [12,700 sq. mm per meter]. Channels produced in the U.S.A.

PREFIX OPTIONS (Check/specify appropriate options)

___ Z Five-foot, Type 304 Stainless Steel*

SUFFIX OPTIONS (Check/specify appropriate options)

Outlet Adapters Add/Each

___ -E1 Closed End Cap	___ -U2 2 [51] No-Hub Bottom Outlet
___ -E2 2 [51] No-Hub End Outlet	___ -U3 3 [76] No-Hub Bottom Outlet
___ -E3 3 [76] No-Hub End Outlet	___ -U4 4 [102] No-Hub Bottom Outlet
___ -E4 4 [102] No-Hub End Outlet	

Miscellaneous Options

___ -DB Bottom Dome Strainer

Trench No.	'A' Shallow Inv.	'B' Deep Inv.	Flow		
			(cfs)	(gpm)	(lps)
89001	3.50 [89]	4.13 [105]	0.216	97	6
89002	4.13 [105]	4.75 [121]	0.276	122	8
89002N	4.75 [121]	4.75 [121]	-	-	-
89003	4.75 [121]	5.38 [137]	0.336	151	10
89004	5.38 [137]	6.00 [152]	0.399	179	11
89004N	6.00 [152]	6.00 [152]	-	-	-
89005	6.00 [152]	6.63 [168]	0.461	207	13
89006	6.63 [168]	7.25 [184]	0.524	235	15
89006N	7.25 [184]	7.25 [184]	-	-	-
89007	7.25 [184]	7.88 [200]	0.586	263	17
89008	7.88 [200]	8.50 [216]	0.651	292	18
89008N	8.50 [216]	8.50 [216]	-	-	-
89009	8.50 [216]	9.13 [232]	0.715	321	20
89010	9.13 [232]	9.75 [248]	0.778	349	22
89010N	9.75 [248]	9.75 [248]	-	-	-
89011	9.75 [248]	10.38 [264]	0.842	378	24
89012	10.38 [264]	11.00 [279]	0.907	407	26
89012N	11.00 [279]	11.00 [279]	-	-	-
89013	11.00 [279]	11.63 [295]	0.971	436	28
89014	11.63 [295]	12.25 [311]	1.036	465	29
89014N	12.25 [311]	12.25 [311]	-	-	-
89015	12.25 [311]	12.88 [327]	1.101	494	31
89016	12.88 [327]	13.50 [343]	1.165	523	33
89016N	13.50 [343]	13.50 [343]	-	-	-
89017	13.50 [343]	14.13 [359]	1.230	552	35
89018	14.13 [359]	14.75 [375]	1.295	581	37
89018N	14.75 [375]	14.75 [375]	-	-	-
89019	14.75 [375]	15.38 [391]	1.359	610	39
89020	15.38 [391]	16.00 [406]	1.424	639	40

* Regularly furnished unless otherwise specified.